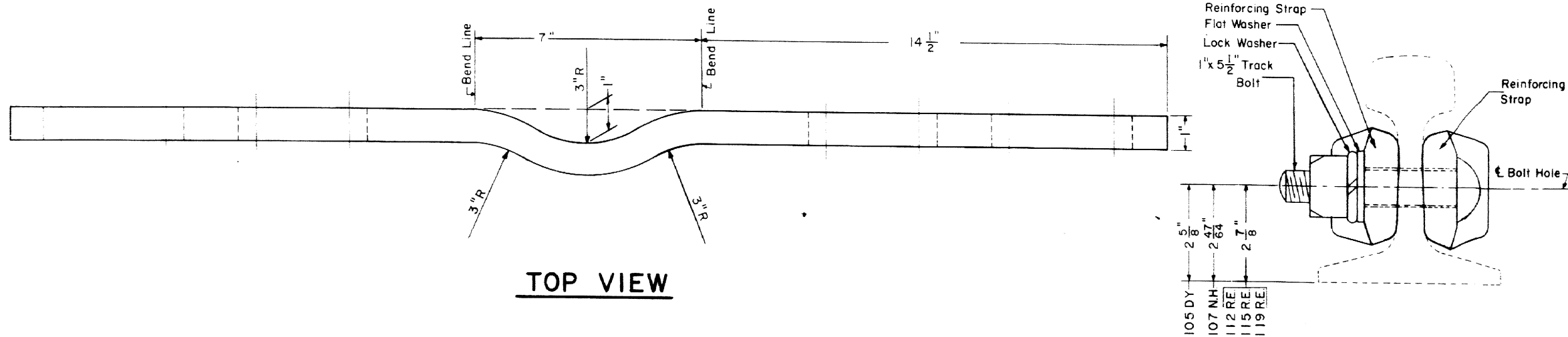
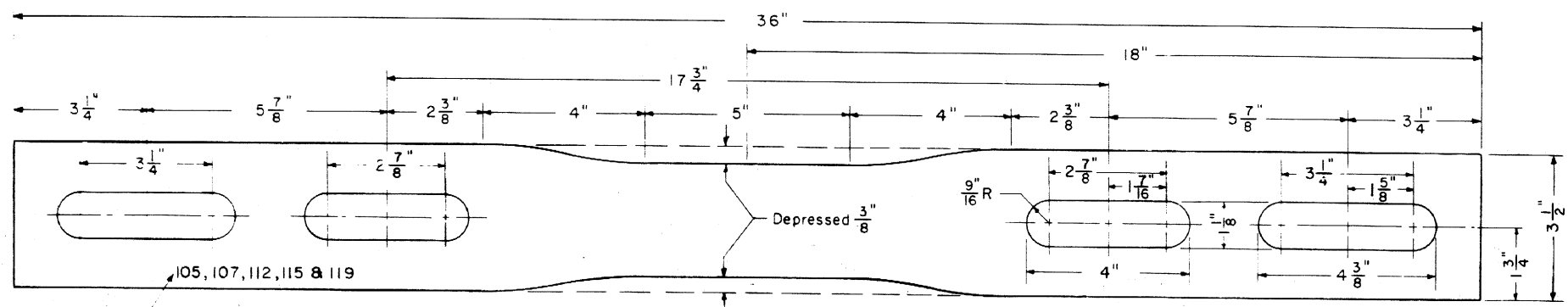


Supersedes Plans 66534-A, 66542-A, 66544-A, 66549-B



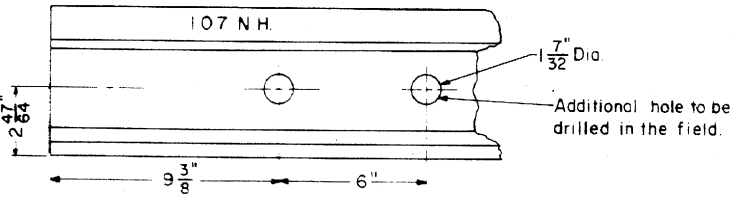
**TOP VIEW**

**STRAP ASSEMBLY**



**SIDE VIEW**

**END VIEW**



**FIGURE - 1**  
**MODIFIED - RAIL END DRILLING**  
**ONLY FOR 107 N.H. RAIL**

**NOTES**

- 1 - Reinforcing strap to be forged from P-135 CR joint bar material.
- 2 - Reinforcing strap shall conform to the current A R E A "Specifications For Rolled Mild Steel".
- 3 - An additional 7/32" dia hole must be drilled only in the 107 N.H. Rail, to accommodate the reinforcing strap, as shown in Figure-1. This work is to be done in the field.

**CONRAIL** **71200-A**

STANDARD

**REINFORCING STRAP FOR FIELD WELDS**  
 WITH 105 DY, 107 N.H., 112 R.E., 115 R.E. and 119 R.E. RAILS

MARCH, 1977

*R.H. Smith*  
Chief Engineer - Maintenance of Way
*J.B. Gorman*  
Chief Engineering Officer