

(2Ea) SQUARE HEAD BOLTS  
ELLIPTICAL NECK BOLTS  
**BOLT LENGTHS FOR FROG NOS. 7, 8, 9 & 10 - 105 DY RAIL**

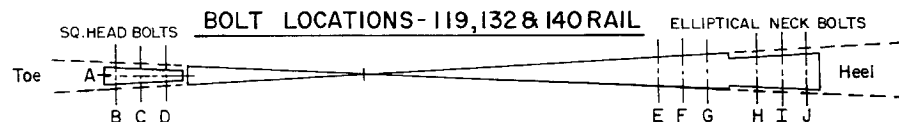
FROG NO.	BOLT DIA.	BOLTS LETTERED IN ORDER - TOE TO HEEL OF FROG									
		SQUARE HEAD			ELLIPTICAL NECK						
		A	B	C	D	E	F	G	H	I	
LENGTH "L" UNDER HEAD (INCHES)											
7	*	9	9	8	10	11	11	12	13	14	
8	See Note Below	9	9	8	10	11	11	12	13	14	
9		9	9	8	10	10	11	11	12	13	
10		9	9	8	10	10	11	12	12	13	

\* Square head bolts are 1" dia.  
Elliptical neck bolts are 7/8" dia.

**SQ. HEAD BOLTS - 105 DY.**

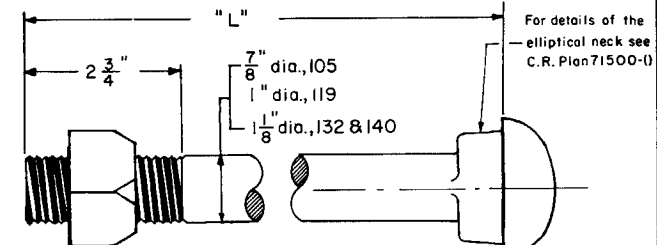
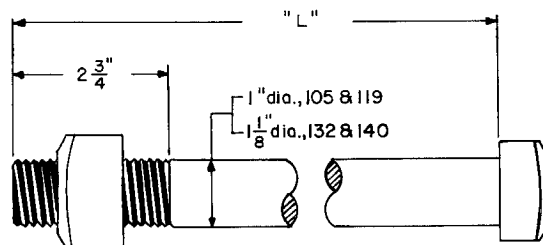
LENGTH (1" DIA)	ACCOUNT AND REFERENCE NOS.
8"	01-147204
9"	01-147907

LENGTH (7/8" DIA.)	ACCOUNT AND REFERENCE NOS.
10"	01-143856
11"	01-143872
12"	01-143898
13"	01-143914
14"	01-143930



**BOLT LENGTHS FOR FROG NOS. 6, 8 & 10 - 119, 132 & 140 LB. RAIL**

FROG NO.	RAIL SECTION	BOLT DIA.	BOLTS LETTERED IN ORDER - TOE TO HEEL OF FROG										
			SQUARE HEAD				ELLIPTICAL NECK						
			A	B	C	D	E	F	G	H	I	J	
LENGTH "L" UNDER HEAD (INCHES)													
6		1"	24	26	24	21	10	11	12	13	14	15	
8	119		24	25	22	20	12	12	13	14	14	15	
10			25	25	22	20	12	12	13	14	14	15	
6		1 1/8"	24	26	24	21	10	11	12	14	14	15	
8	132		24	25	22	20	12	13	13	14	15	14	
10			24	24	22	20	12	12	13	14	14	15	
6		1 1/8"	24	27	24	21	11	12	13	14	15	16	
8	140		25	25	22	20	12	12	13	14	15	15	
10			24	25	22	20	12	13	13	14	14	15	



**SQUARE HEAD**

**ELLIPTICAL NECK**

**FROG BOLTS**

**ACCOUNT & REFERENCE NUMBERS**

**SQUARE HEAD BOLTS**

1" Dia. - 119 R.E.

LENGTH	ACCOUNT AND REFERENCE NOS.
20"	01-155603
21"	01-156304
22"	01-156320
24"	01-158409
25"	01-156346
26"	01-156361

**ELLIPTICAL NECK BOLTS**

1" Dia. - 119 R.E.

LENGTH	ACCOUNT AND REFERENCE NOS.
10"	01-204609
11"	01-206000
12"	01-207404
13"	01-208808
14"	01-210200
15"	01-144631

**SQUARE HEAD BOLTS**

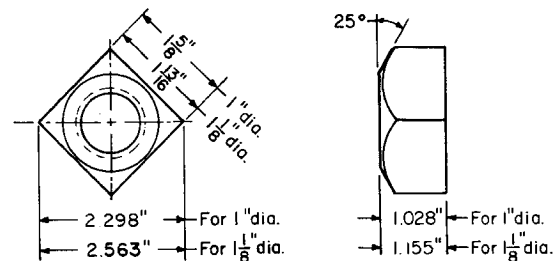
1 1/8" Dia. - 132 & 140 R.E.

LENGTH	ACCOUNT AND REFERENCE NOS.
20"	01-168903
21"	01-169604
22"	01-170305
24"	01-171709
25"	01-172400
26"	01-172426
27"	01-172442

**ELLIPTICAL NECK BOLTS**

1 1/8" Dia. - 132 & 140 R.E.

LENGTH	ACCOUNT AND REFERENCE NOS.
10"	01-172582
11"	01-210903
12"	01-211604
13"	01-213006
14"	01-214400
15"	01-215100
16"	01-215803



**HEAVY SQUARE NUT**

**NOTES**

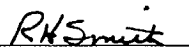
- 1-Bolts and nuts shall conform to current A.R.E.A. Specifications for special trackwork, Article II and details shown on this plan:-  
Bolts and nuts per A.S.A.-B18.2.2-1965  
Threads-A.S.A.-B1.1-1960 Class 2 Fit, Coarse Threads Series with cut threads.
- 2-All nuts to be wrench fit and Medium Carbon Steel.  
(0.40 Minimum - 0.55 Maximum)
- 3-Bolts for frogs 119 lb. or lighter shall be 1" dia., except 105 DY which is 7/8" dia.  
Bolts for frogs heavier than 119 lb. shall be 1 1/8" dia.


**CONRAIL 71502-C**

STANDARD

**REPLACEMENT BOLTS  
FOR SELF-GUARDED FROGS**

JANUARY, 1980

  
 Chief Engineer - Maintenance of Way

  
 Chief Engineering Officer