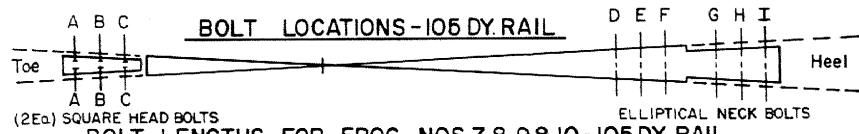


Revisions

- "B"- Oct., 1980
- "C"- Oct., 1982
- D - Sept., 1985
- E - Sept., 1986
- F - Sept., 1994



BOLT LENGTHS FOR FROG NOS.7,8,9 & 10-105 DY RAIL

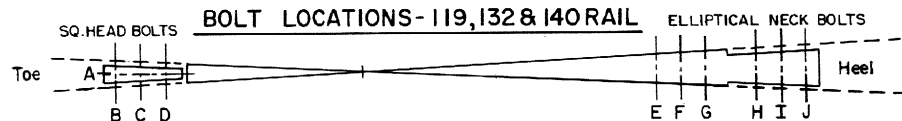
FROG NO.	BOLT DIA.	BOLTS LETTERED IN ORDER-TOE TO HEEL OF FROG									
		SQUARE HEAD			ELLIPTICAL NECK						
		A	B	C	D	E	F	G	H	I	J
LENGTH "L" UNDER HEAD (INCHES)											
7	* See Note Below	9	9	8	10	11	11	12	13	14	
8		9	9	8	10	11	11	12	13	14	
9		9	9	8	10	10	11	11	12	13	
10		9	9	8	10	10	11	12	12	13	

* Square head bolts are 1" dia.
Elliptical neck bolts are 7/8" dia.

SQ. HEAD BOLTS-105 DY.

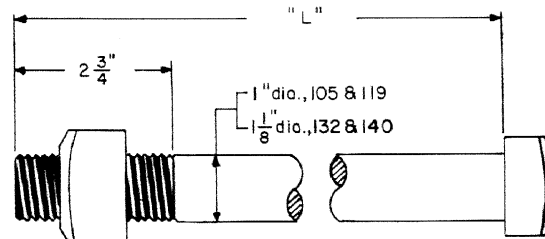
LENGTH (1" DIA)	ACCOUNT AND REFERENCE NOS.
8"	01-147204
9"	01-147907

LENGTH (7/8" DIA.)	ACCOUNT AND REFERENCE NOS.
10"	01-143856
11"	01-143872
12"	01-143898
13"	01-143914
14"	01-143930

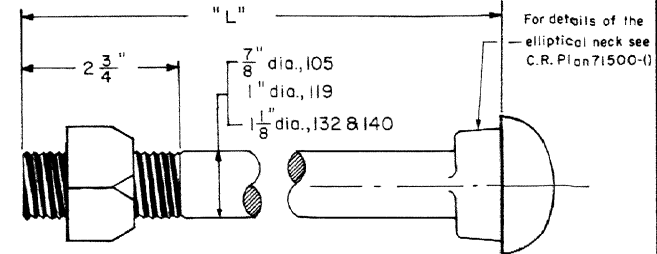


BOLT LENGTHS FOR FROG NOS.6,8 & 10-119,132 & 140 LB. RAIL

FROG NO.	RAIL SECTION	BOLT DIA.	BOLTS LETTERED IN ORDER-TOE TO HEEL OF FROG											
			SQUARE HEAD				ELLIPTICAL NECK							
			A	B	C	D	E	F	G	H	I	J	K	L
LENGTH "L" UNDER HEAD (INCHES)														
6	119	1"	24	26	24	21	10	11	12	13	14	15		
8			24	25	22	20	12	12	13	14	14	15		
10			25	25	22	20	12	12	13	14	14	15		
6	132	1"	24	26	24	21	10	11	12	14	14	15		
8			24	25	22	20	12	13	13	14	15	14		
10			24	24	22	20	12	12	13	14	14	15		
6	140	1 1/8"	24	27	24	21	11	12	13	14	15	16		
8			25	25	22	20	12	12	13	14	15	15		
10			24	25	22	20	12	13	13	14	14	15		



SQUARE HEAD



ELLIPTICAL NECK

FROG BOLTS

ACCOUNT & REFERENCE NUMBERS

SQUARE HEAD BOLTS

1" Dia.-119 R.E.

LENGTH	ACCOUNT AND REFERENCE NOS.
20"	01-155603
21"	01-156304
22"	01-156320
24"	01-158409
25"	01-156346
26"	01-156361

ELLIPTICAL NECK BOLTS

1" Dia.-119 R.E.

LENGTH	ACCOUNT AND REFERENCE NOS.
10"	01-204609
11"	01-206000
12"	01-207404
13"	01-208808
14"	01-210200
15"	01-144631

SQUARE HEAD BOLTS

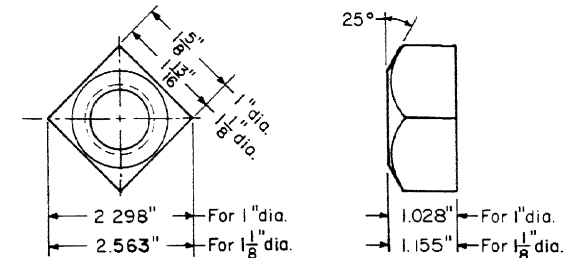
1 1/8" Dia.-132 & 140 R.E.

LENGTH	ACCOUNT AND REFERENCE NOS.
20"	01-168903
21"	01-169604
22"	01-170305
24"	01-171709
25"	01-172400
26"	01-172426
27"	01-172442

ELLIPTICAL NECK BOLTS

1 1/8" Dia.-132 & 140 R.E.

LENGTH	ACCOUNT AND REFERENCE NOS.
10"	01-172582
11"	01-210903
12"	01-211604
13"	01-213006
14"	01-214400
15"	01-215100
16"	01-215803



HEAVY SQUARE NUT

NOTES

- 1-Bolts and nuts shall conform to current Conrail MW 184 Specs. and details on this plan. All threads to be cut threads.
- 2-All nuts to be free fit and Medium Carbon Steel. Spring washers shall conform to current Conrail MW 186 Specs.
- 3-Bolts for frogs 119 lb. or lighter shall be 1" dia., except 105 DY which is 7/8" dia. Bolts for frogs heavier than 119 lb. shall be 1 1/8" dia.
- 4- All bolts, nuts and spring washers to be thoroughly coated with a metal preservative, approved by the Chief Engineer.

CONRAIL 71502-F
STANDARD

REPLACEMENT BOLTS
FOR SELF-GUARDED FROGS

JANUARY, 1980

R.H. Smith
Chief Engineer - Maintenance of Way

A.L. Carlson
Chief Engineering Officer