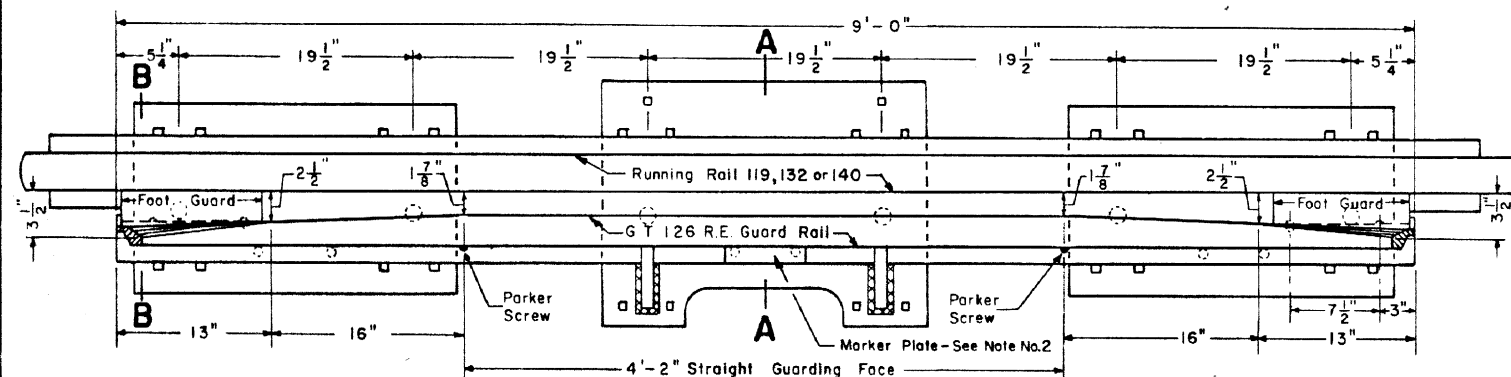
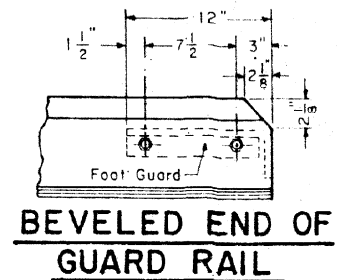
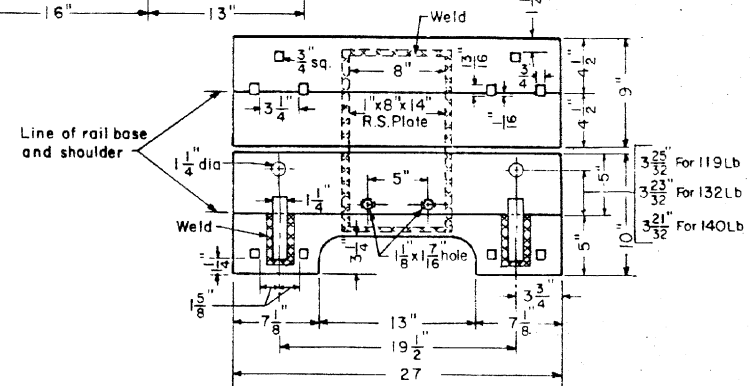


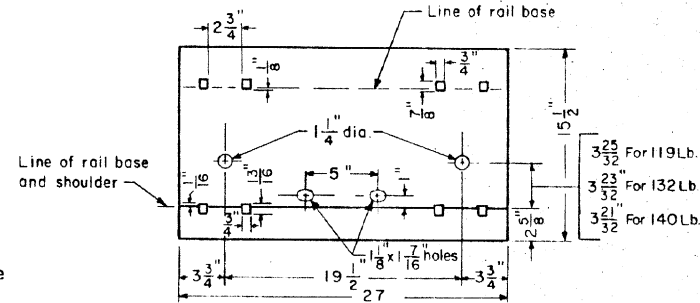
13'-0" HOOK FLANGE GUARD RAIL
(FOR INSTALLATION ON 8 TIES)



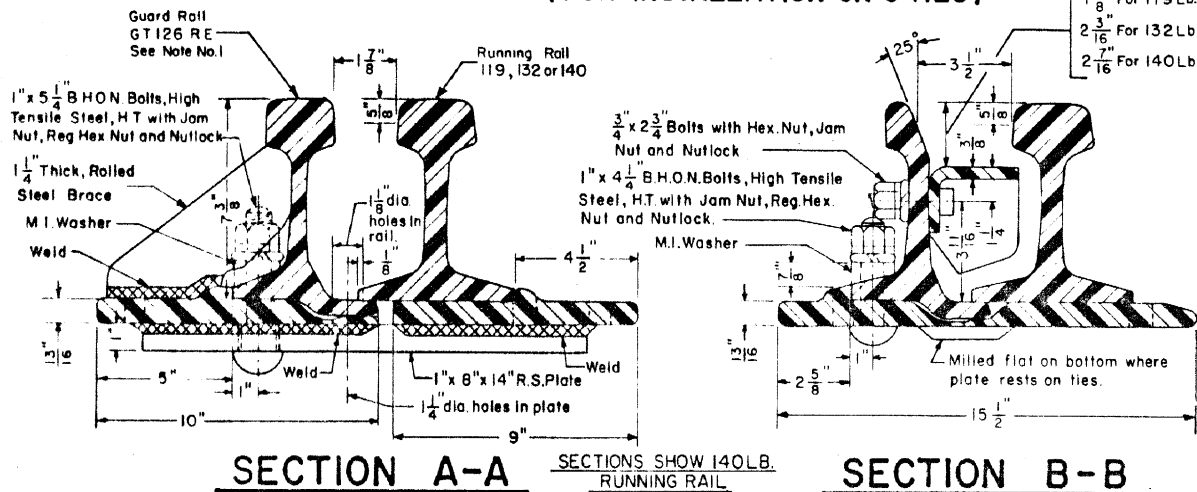
9'-0" HOOK FLANGE GUARD RAIL
(FOR INSTALLATION ON 6 TIES)



PLAN VIEW OF CENTER PLATE



PLAN VIEW OF END PLATE



NOTES

1- The top of the guard rail shall be higher than the running rail, except when 140lb.

RAIL	HEIGHT OF GUARD RAIL ABOVE RAIL	HEIGHT OF GUARD RAIL ABOVE RUNNING RAIL
119	6 13/16	9/16
132	7 1/8	1/4
140	7 5/16	Level

- 2- Marker Plate shall specify what running rail the guard rail is to be used with:-
119, 132 or 140lb, whichever applies.
- 3- Guard rail is manufactured by:-
Bethlehem Steel Corporation
Design 751

CONRAIL 71810-B

STANDARD

9'-0" & 13'-0" HOOK FLANGE GUARD RAILS

FOR 119 R.E., 132 R.E. or 140 R.E. RAIL

JUNE, 1974

R. S. Smith
Chief Engineer - Maintenance of Way

A. B. Gordon
Chief Engineering Officer