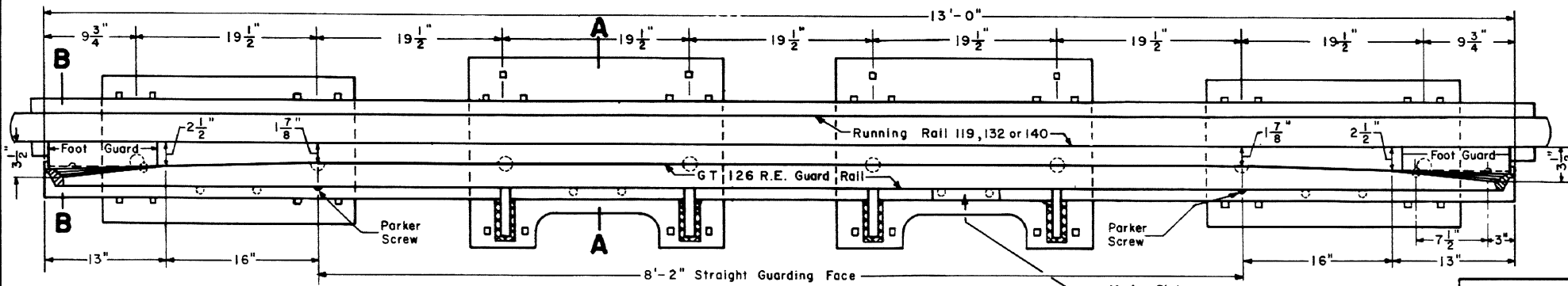
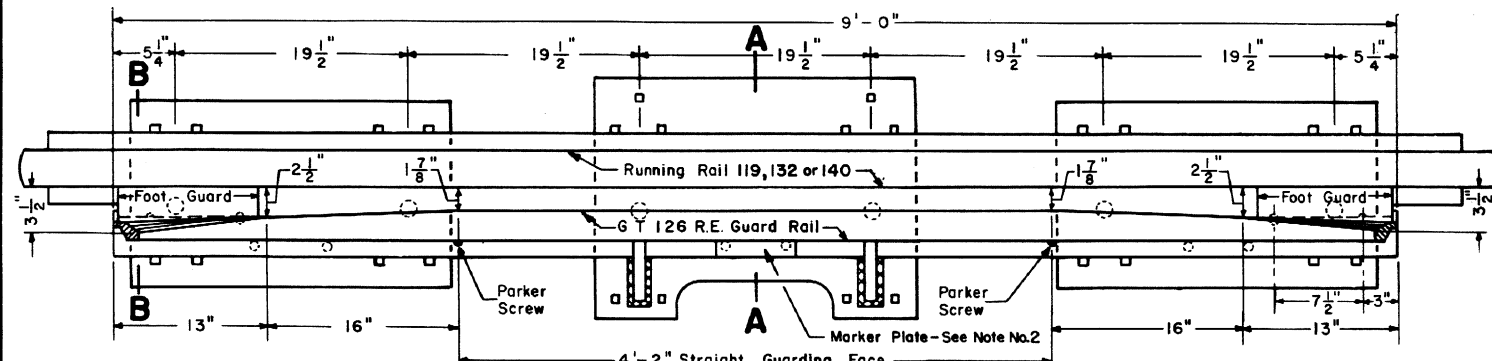


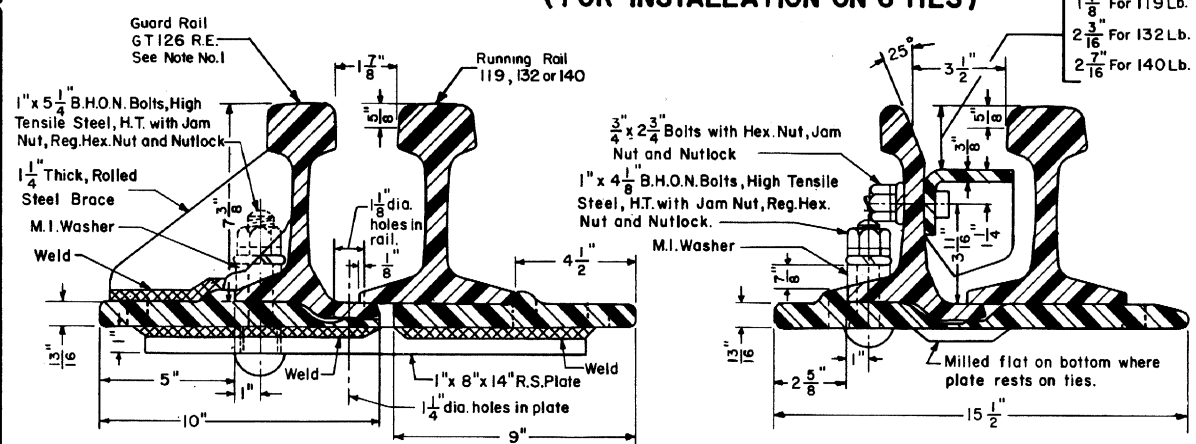
Revisions  
 B - Mar. 1978  
 C - Jan. 1983



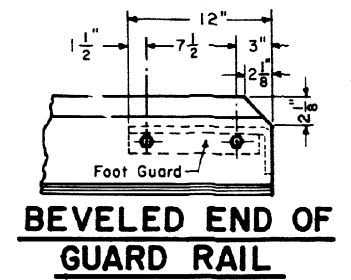
**13'-0" HOOK FLANGE GUARD RAIL**  
 (FOR INSTALLATION ON 8 TIES)



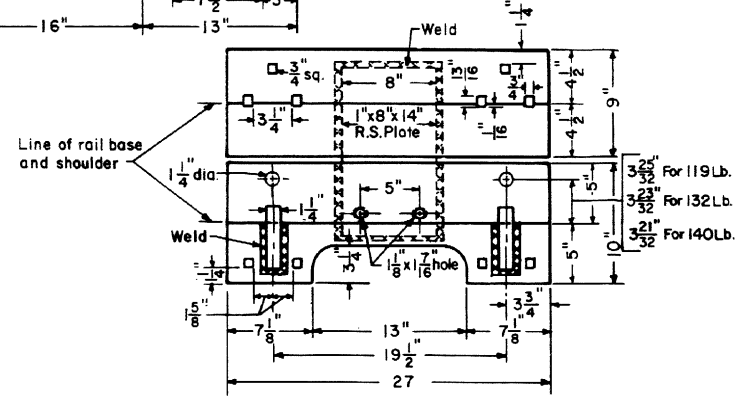
**9'-0" HOOK FLANGE GUARD RAIL**  
 (FOR INSTALLATION ON 6 TIES)



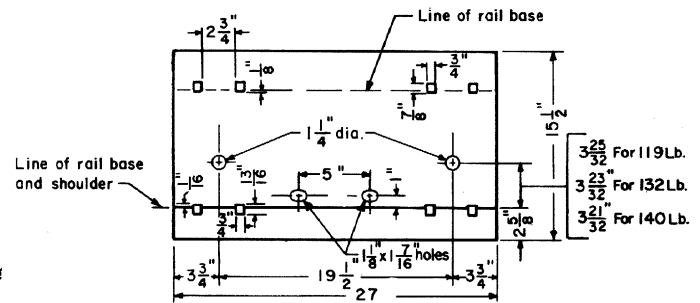
**SECTION A-A**      SECTIONS SHOW 140LB. RUNNING RAIL      **SECTION B-B**



**BEVELED END OF GUARD RAIL**



**PLAN VIEW OF CENTER PLATE**



**PLAN VIEW OF END PLATE**

**NOTES**

1- The top of the guard rail shall be higher than the running rail, except when 140lb.

RAIL	HEIGHT OF GUARD RAIL ABOVE RAIL	GUARD RAIL ABOVE RUNNING RAIL
119	6 <sup>13</sup> / <sub>16</sub> "	9 <sup>9</sup> / <sub>16</sub> "
132	7 <sup>1</sup> / <sub>8</sub> "	4 <sup>1</sup> / <sub>4</sub> "
140	7 <sup>5</sup> / <sub>16</sub> "	Level

2-Marker Plate shall specify what running rail the guard rail is to be used with:-  
 119, 132 or 140lb., whichever applies.

3-Guard rail is manufactured by:-  
 Bethlehem Steel Corporation  
 Design 751

**71810-C**

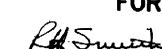

**CONRAIL**

STANDARD

**9'-0" & 13'-0" HOOK FLANGE GUARD RAILS**

FOR 119 R.E., 132 R.E. or 140 R.E. RAIL

JUNE, 1974

Chief Engineer - Maintenance of Way      Chief Engineering Officer