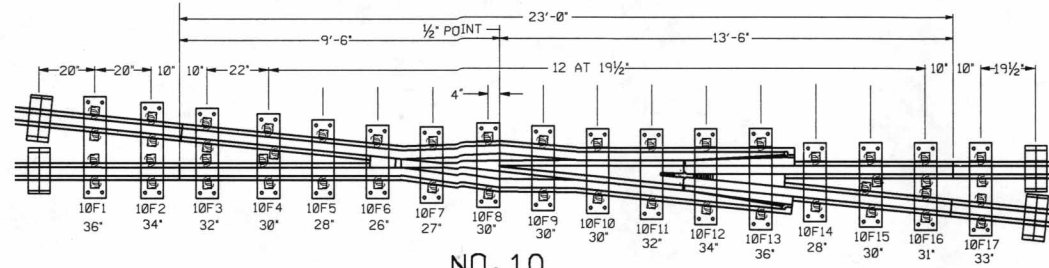
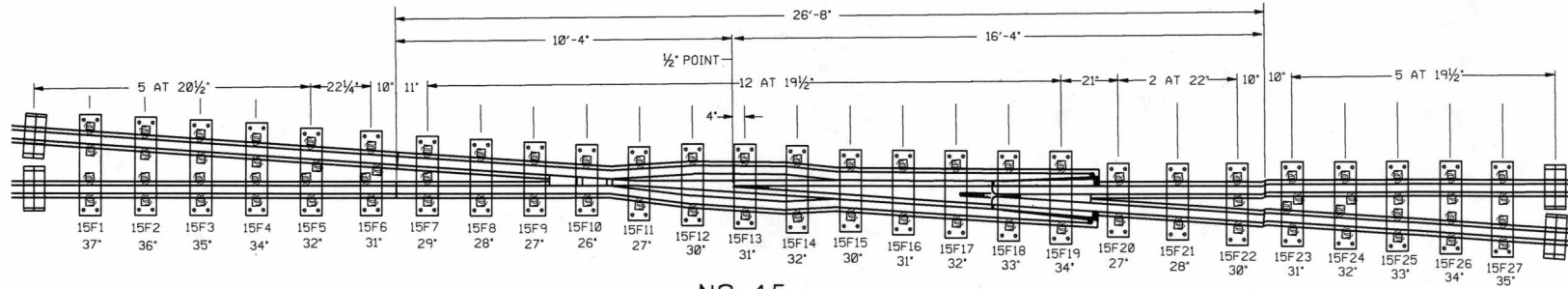


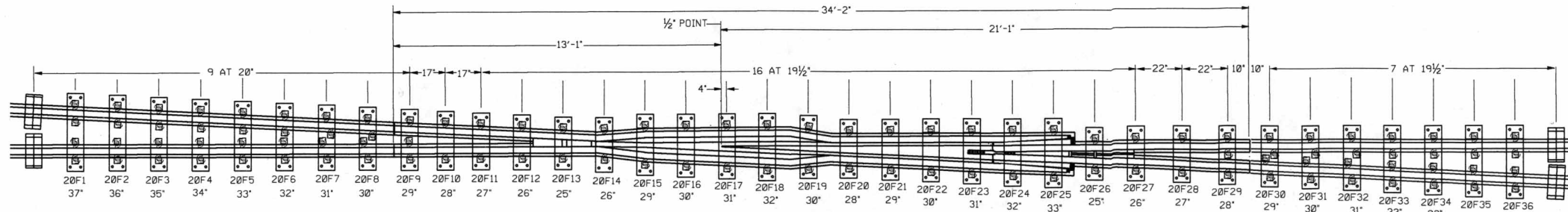
NO. 8



NO. 10



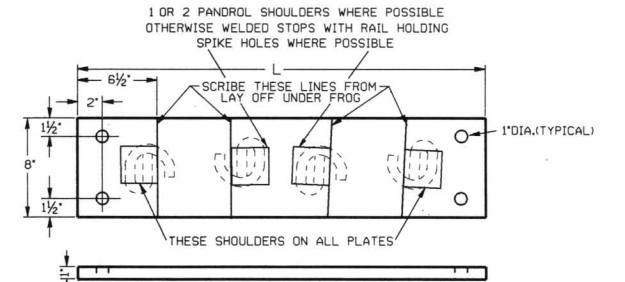
NO. 15



NO. 20

NOTES

- 1-EXCEPT WHERE SHOWN ON THIS PLAN, PLATES SHALL CONFORM TO THE CURRENT CONRAIL MW-182 SPECS.
- 2-PLATES SHALL BE BRANDED WITH A TRADEMARK TO INDICATE MANUFACTURER, AND ALSO THE YEAR MANUFACTURED AND THE PLATE NUMBER.
- 3-SUGGESTED PLATE LENGTHS ARE SHOWN UNDER PLATE NUMBERS.
- 4-PLATES ARE SHOWN WITH A HAND (PERPENDICULAR TO THE MAIN LINE). PLATES FOR FROG NOS.10,15 AND 20 MAY BE FURNISHED NO HAND (PERPENDICULAR TO CENTERLINE OF THE FROG).
- 5-1" DIAMETER HOLES IN PLATES FURNISHED NO HAND SHOULD BE 4" APART INSTEAD OF 5".
- 6-PLATES FOR THE NO.8 FROG WILL ALWAYS HAVE A HAND.



FROG PLATE

L = PLATE LENGTHS SHOWN UNDER FROG NUMBERS



CONRAIL 72226-A
STANDARD

PANDROL SHOULDER FROG PLATES

FOR PANELED AND PREPLATED TURNOUTS

NOVEMBER, 1996

A.C.E. - STANDARDS & TRACK ANALYSIS

CHIEF ENGINEER