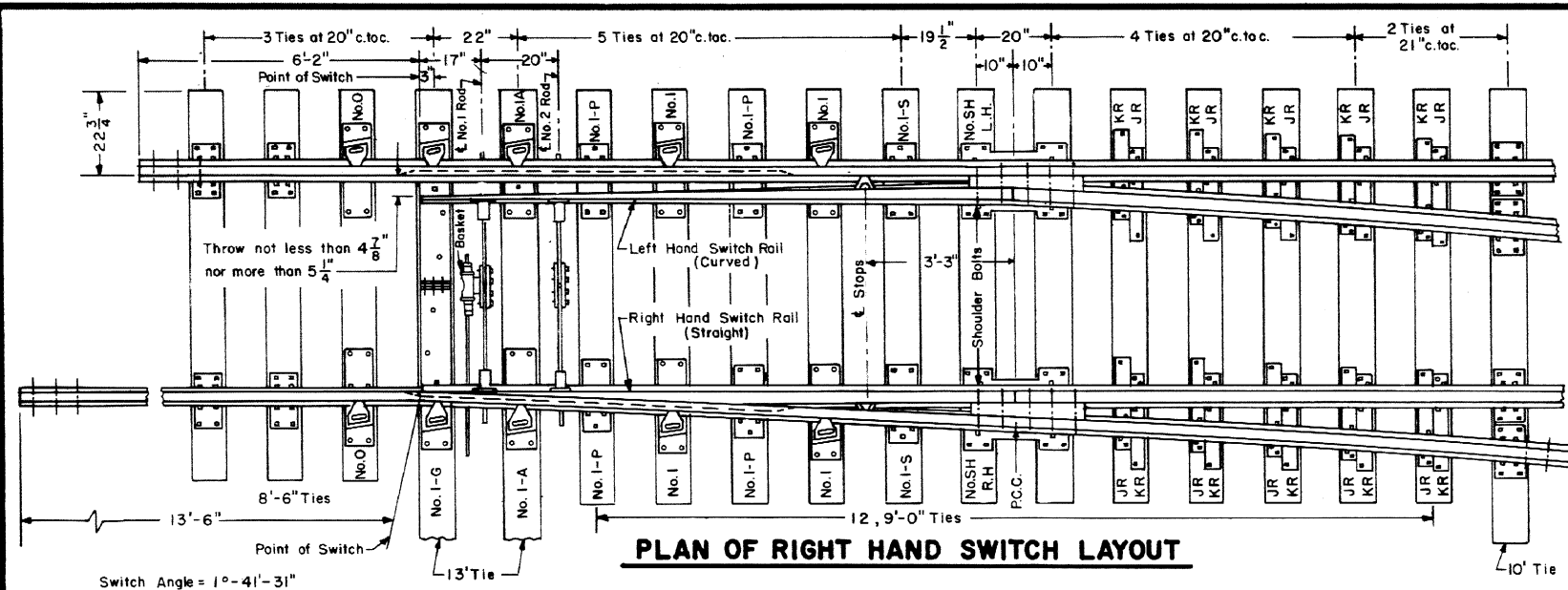
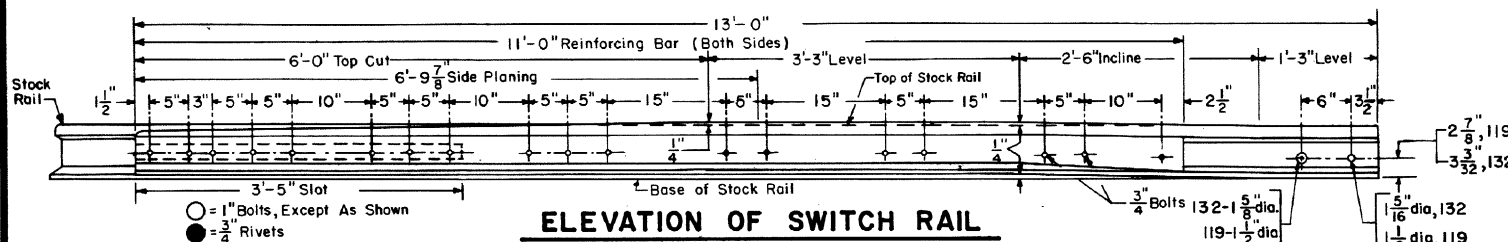


**Revisions**

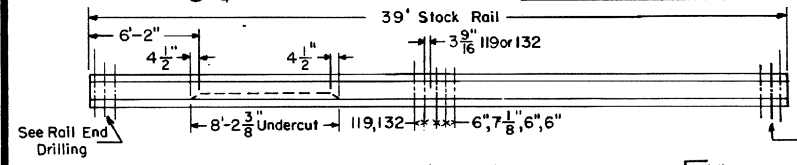
- B - Feb., 1981
- C - May, 1981
- D - Feb., 1988



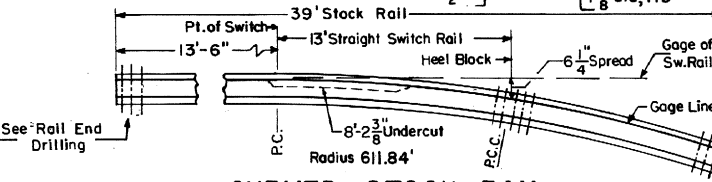
**PLAN OF RIGHT HAND SWITCH LAYOUT**



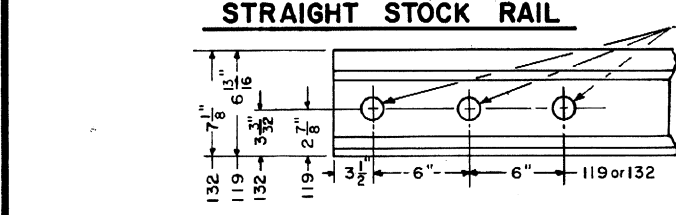
**ELEVATION OF SWITCH RAIL**



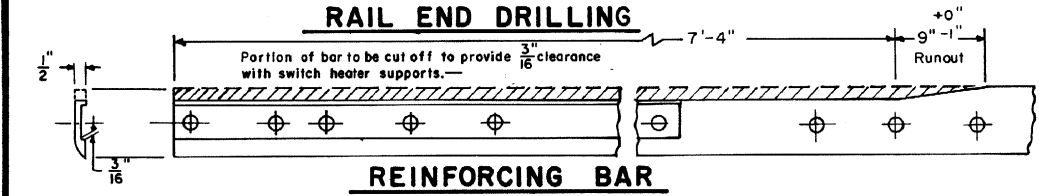
**STRAIGHT STOCK RAIL**



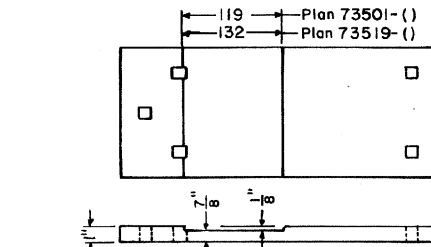
**CURVED STOCK RAIL**



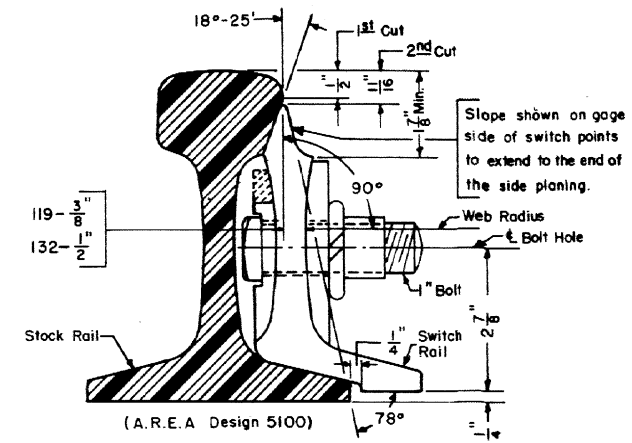
**RAIL END DRILLING**



**REINFORCING BAR**



**PLATE No. I-S**



**SWITCH POINT DETAIL**

**BILL OF MATERIAL**

- \* 1 - Pair 13'-0" Switch Points, I-R.H. straight, I-L.H. curved complete with reinforcing bars, rod clips and rail stops attached.
- \* 2 - Undercut Stock Rails, I-L.H. straight and I-R.H. curved
- ▲ 2 - Vertical Switch Rods, Insulated, I with basket. See C.R. Plan 73518-(). See Note No. 6
- 2 - Heel Block Assemblies, complete. See C.R. Plans 73515-(), 132; 73602-(), 119
- 1 - No. I-G Insulated Gage Plate
- 2 - No. O Adjustable Brace Plate
- 2 - No. I-A " " Slide Plate    See C.R. Plans 73519-() For 132    73501-() For 119
- 4 - No. I " " " " "
- 4 - No. I-P Shoulder Slide Plate
- 2 - No. SH Heel Plate, I-R.H. and I-L.H.
- 2 - No. I-S Shoulder Slide Plate (Special). Shown on this plan.
- 10 - "JR" and "KR" Twin Tie Plates. See C.R. Plan 72202-().
- 10 - Adjustable Rail Brace, Type A, complete. See C.R. Plans 73515-() or 73602-().
- ▲ 4 - Adjustable Rocker Clips for Vertical Switch Rods. See C.R. Plan 73518-(). See Note 6

**NOTES**

- 1 - The 13'-0" Switch to be used only with Lap Turnouts.
- 2 - This plan is for use with A.R.E.A. recommended standards for 119, 132 or 140 R.E. rail.
- 3 - Workmanship and materials, including beveling and hardening rail ends, shall be as per current A.R.E.A. Specifications.
- 4 - All bolts shall be dipped immediately before applying (all threads are thoroughly coated) in NO-OX-ID "GG" grease, manufactured by Dearborn Chemical Co.
- \* 5 - When ordering a Left Hand Switch - these items shall be opposite hand.
- ▲ 6 - With 119 lb. rail use horizontal rods and side jaw clips. See C.R. Plan 73521-().
- 7 - Stock rails and switch points to be fully heat treated. 119 and 132 lb rail.

**CONRAIL 73157-D**

STANDARD

**13'-0" CURVED SPLIT SWITCH  
INSULATED and UNDERCUT  
119 R.E. or 132 R.E. RAIL**

JUNE, 1979

R.H. Smith    Chief Engineer - Maintenance of Way

G.P. Gordon    Chief Engineering Officer