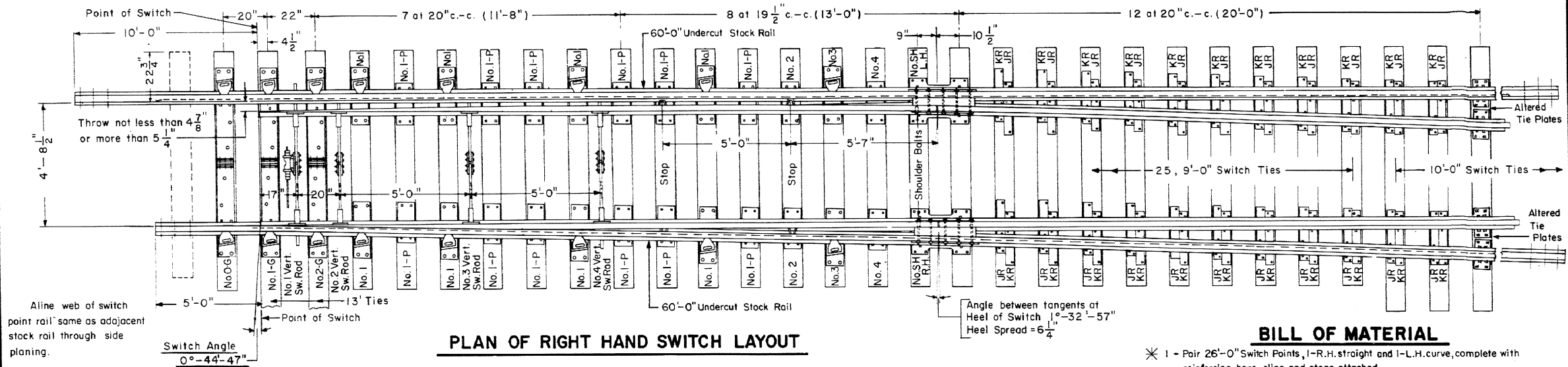
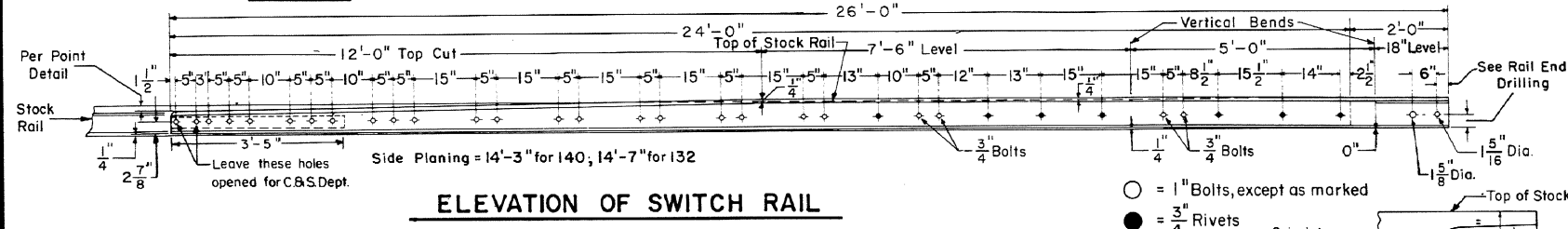


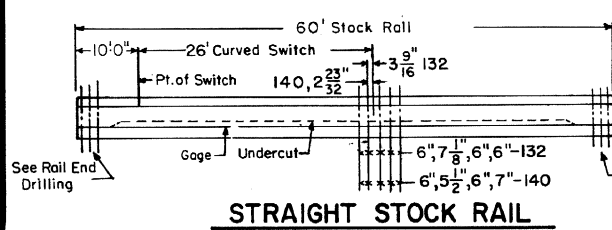
- Revisions  
 B - Mar., 1979  
 C - Aug., 1979  
 D - May, 1980  
 E - Nov., 1983  
 F - Feb., 1984  
 G - Apr., 1986



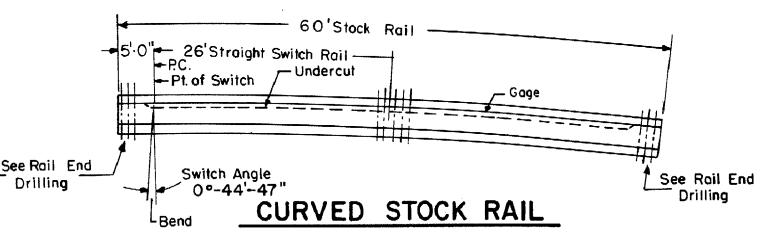
**PLAN OF RIGHT HAND SWITCH LAYOUT**



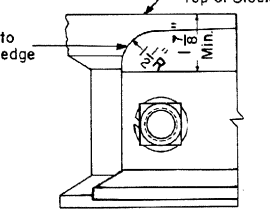
**ELEVATION OF SWITCH RAIL**



**STRAIGHT STOCK RAIL**



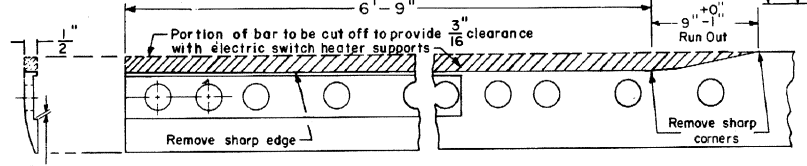
**CURVED STOCK RAIL**



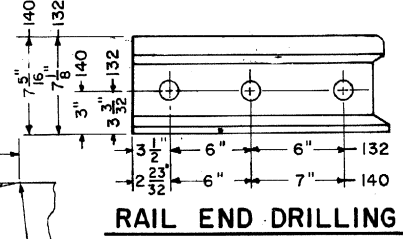
**END OF SWITCH RAIL (SIDE VIEW)**

**TURNOUT INFORMATION**

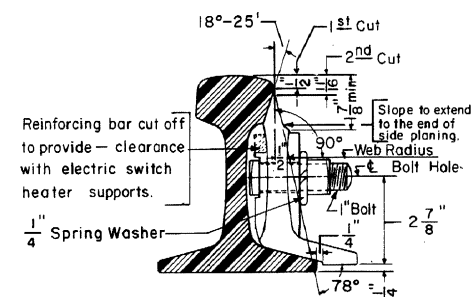
- OFFSETS  
 C.R. Plan 73011(-) & 73182(-)  
 TIE and RAIL LAYOUT  
 C.R. Plan 73194(-)



**REINFORCING BAR**



**RAIL END DRILLING**



**SWITCH POINT DETAIL (A.R.E.A. DESIGN 5100)**

**BILL OF MATERIAL**

- \* 1 - Pair 26'-0" Switch Points, I-R.H. straight and I-L.H. curve, complete with reinforcing bars, clips and stops attached.
- 2 - 60'-0" Undercut Stock Rails. See C.R. Plan 73062(-).
- 4 - Insulated Vertical Switch Rods, with basket. See C.R. Plan 73516(-).
- 2 - Heel Block Assemblies, complete. See C.R. Plan 73515(-).
- 3 - Insulated Gage Plates, No. 0-G, No. 1-G and No. 2-G
- 8 - No. 1 Adjustable Brace Slide Plates
  - 2 - No. 3 " " " " " " " " " " " "
  - 2 - No. 2 " " " " " " " " " " " "
  - 2 - No. 4 " " " " " " " " " " " "
  - 2 - No. SH Heel Plates, I-R.H. and I-L.H.
- 16 - Adjustable Rail Braces, Type-A, complete. See C.R. Plan 73515(-).
- 4 - Switch Stops. See C.R. Plan 73515(-).
- 8 - Adjustable Rocker Clips for Vertical Switch Rods. See C.R. Plan 73516(-).
- 22 - "JR" Twin Tie Plate - See C.R. Plan 72202(-).
- 22 - "KR" Twin Tie Plate - See C.R. Plan 72202(-).
- 4 - Altered Std. Tie Plates. Interfering corners cut off.

**NOTES**

- 1 - This plan is for use with A.R.E.A. recommended standards for 132 or 140 R.E. rail.
- 2 - All rails to be Fully Heat Treated.
- 3 - All bolts shall be dipped immediately before applying (so that all threads are thoroughly coated) in NO-OX-ID "GG" grease, mfr'd. by Dearborn Chemical Co.
- \* 4 - When ordering a Left Hand Switch, these items shall be opposite hand.

**CONRAIL 73178-G**

STANDARD

**26'-0" CURVED SPLIT SWITCH**  
**FOR NO. 15 TURNOUT - UNDERCUT**  
 132 R.E. or 140 R.E. RAIL  
 OCTOBER, 1976

Chief Engineer - Maintenance of Way  
 Chief Engineering Officer