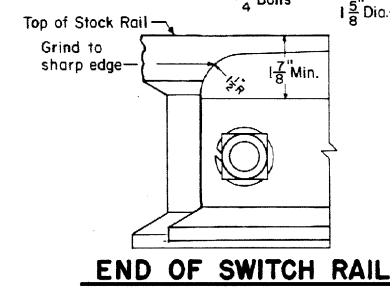
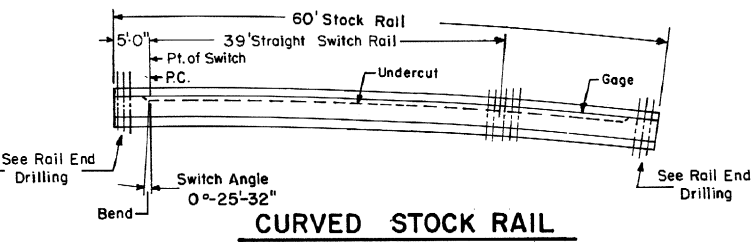
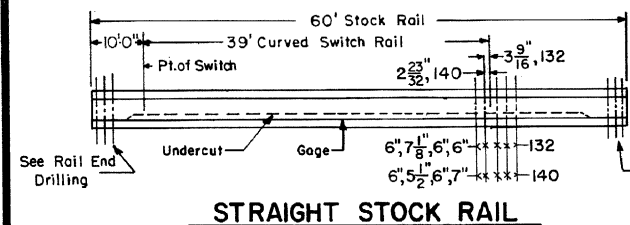
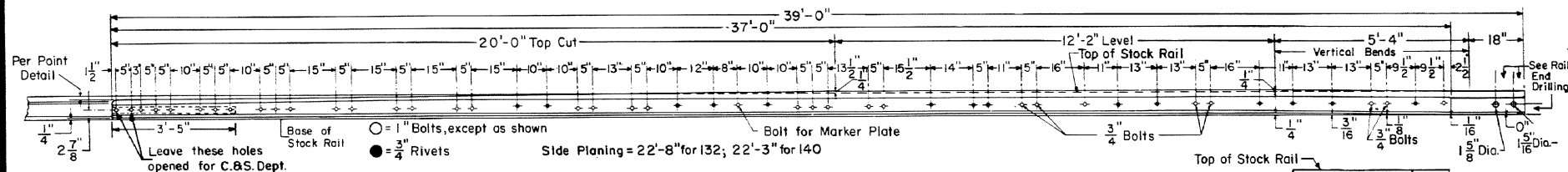
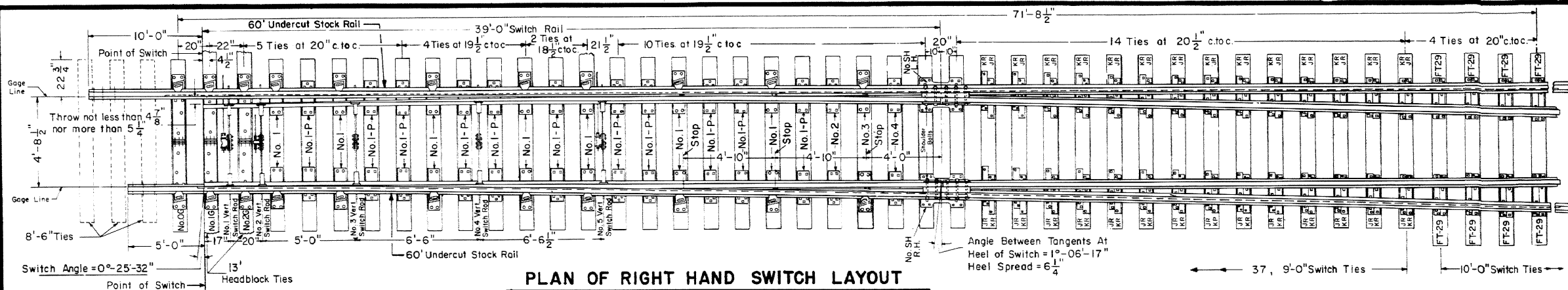


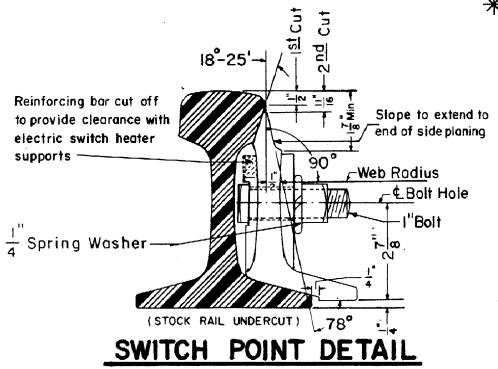
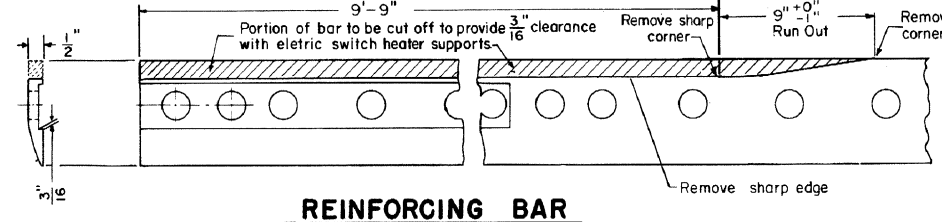
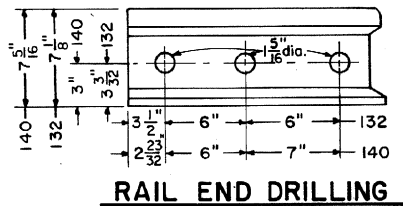
Revisions

- B - Aug., 1979
- C - May, 1980
- D - Nov., 1983
- E - Feb., 1984
- F - Apr., 1986



TURNOUT INFORMATION

- OFFSETS**
C.R. Plan 73012-() & 73183-()
- TIE and RAIL LAYOUT**
C.R. Plan 73195-()



BILL OF MATERIAL


- * 1 - Pair 39'-0" Switch Points, 1-R.H. straight and 1-L.H. curved, complete with reinforcing bars, clips and stops attached.
- 2 - 60'-0" Undercut Stock Rails. C.R. Plan 73062-().
- 5 - Insulated Vertical Switch Rods, 2 with baskets. C.R. Plan 73514-().
- 2 - Heel Block assemblies, complete. C.R. Plan 73515-().
- 3 - Insulated Gage Plates Nos. O-G, I-G & 2-G.
- 14 - No. 1 Adjustable Brace Slide Plates
- 1 - No. 3 " " " " " " " " " " " "
- 22 - No. 1-P Shoulder Slide Plates C.R. Plan 73513-()
- 2 - No. 2 " " " " " " " " " " " "
- 2 - No. 4 " " " " " " " " " " " "
- 2 - No. SH Heel Plates, 1-R.H. and 1-L.H.
- 5 - Switch Rail Stops. C.R. Plan 73515-().
- 10 - Adjustable Rocker Clips for vertical switch rods. C.R. Plan 73514-().
- 28 - "JR" Twin Tie Plates C.R. Plan 72202-().
- 28 - "KR" Twin Tie Plates C.R. Plan 72202-().
- 22 - Adjustable Rail Braces, Type A, complete. C.R. Plan 73515-().
- 16 - FT29 Frog Tie Plates. C.R. Plan 72105-().


NOTES

- 1 - This plan is for use with A.R.E.A. recommended standards for 132 or 140 R.E. rail.
- 2 - All rails to be Fully Heat Treated.
- 3 - All bolts shall be dipped immediately before applying (so that threads are thoroughly coated) in NO-OX-ID "GG" grease, manufactured by Dearborn Chemical Company.
- * 4 - When ordering a Left Hand Switch, these items shall be opposite hand.

CONRAIL 73179-F

STANDARD
39'-0" CURVED SPLIT SWITCH
 FOR NO. 20 TURNOUT - UNDERCUT
 132 R.E. or 140 R.E. RAIL
 MARCH, 1979


 Chief Engineer - Maintenance of Way


 Chief Engineering Officer