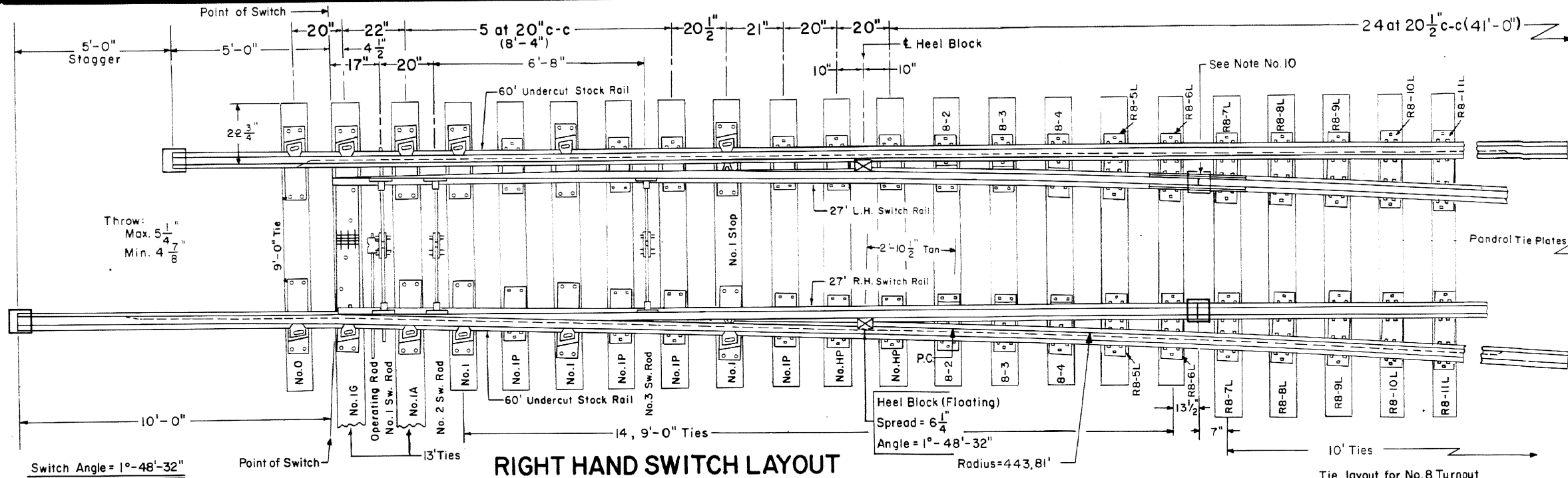


Revisions

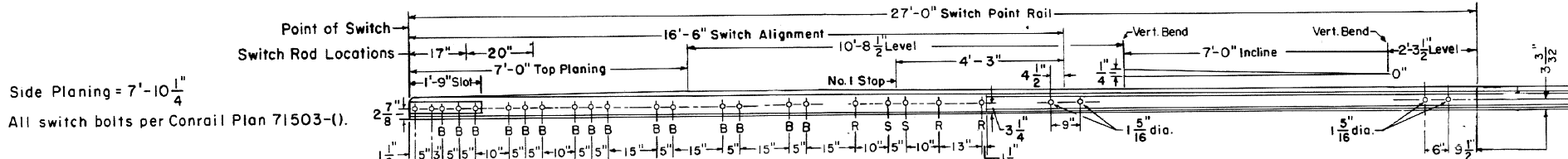
- "B"- Mar., 1979
- "C"- Jan., 1980
- "D"- May, 1980
- "E"- Dec., 1981
- "F"- Jun., 1983
- G - Sept., 1985
- H - Apr., 1986
- I - Dec., 1987
- June, 1991
- n., 1993
- Dec., 1994
- M-July, 1996



Throw:
Max. $5\frac{1}{4}$ "
Min. $4\frac{7}{8}$ "

RIGHT HAND SWITCH LAYOUT

Tie layout for No. 8 Turnout
see Conrail Plan 73184-(), Sheet 1



ELEVATION OF SWITCH RAIL

See Conrail Plan 73167-() for detail
showing clearance on reinforcing bar
for electric switch heater supports.

Side Planing = $7'-10\frac{1}{4}$ "
All switch bolts per Conrail Plan 71503-().

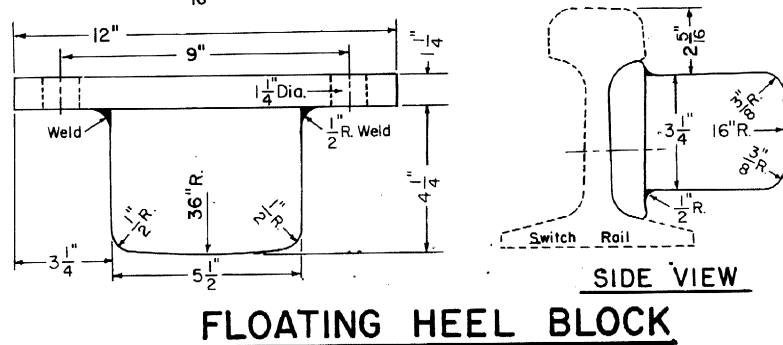
- "B" = 1" dia. H.T. machine bolts with square nuts,
spring washers, $\frac{1}{4}$ " cotter pins. Hex nuts at rocker clips.
- "R" = $\frac{3}{4}$ " dia. rivets.
- "S" = $\frac{3}{4}$ " dia. machine bolts for stops with square nuts,
spring washers and $\frac{3}{16}$ " cotter pins.

NOTES

- 1- This plan is for use with A.R.E.A. recommended standards for 132RE./136RE
- 2- Workmanship and materials shall be as per current A.R.E.A. Specifications.
- 3- Gage Plate 1-G as shown on Conrail Plan 73522-()
- 4- Switch Plates No. 0, 1, IA, IP shown on Conrail Plan 73522-()
- 5- Turnout Plates No. 2 thru No. 11 as shown on Conrail Plan 72222-()
- 6- Stock Rails to be undercut as per Conrail Plan 73062-()
- 7- Switch Rail to be undercut per A.R.E.A. Design 5100.
- 8- All rails to be Fully Heat Treated, and meet CR MW 180 Spec.
- 9- Vertical insulated switch rods and adjustable rocker clips as per Conrail Plan 73518-()
- 10- All rails, including switch rails, to be drilled per Conrail Plan 71015-() or
Plan 71016-(), except that first hole is not to be drilled by the manufacturer. Conrail forces to field
drill first hole when necessary.
- 11- See Conrail Plan 73184-(), sheet 2, for Bill of Material.
- 12- See Conrail Plan 73181-() for Switch Offsets.

Indicates Field Weld

13- All bolts shall be dipped immediately before applying (so that all
threads are thoroughly coated) in NO-OX-ID "GG" grease manufactured
by Dearborn Chemical Co.



FLOATING HEEL BLOCK

73180-M

STANDARD

**16'-6" STRAIGHT SPLIT SWITCH
27' SWITCH RAILS WITH FLOATING HEEL BLOCKS
FOR NO. 8 WELDED TURNOUT**

JANUARY 1978

Chief Engineer - Maintenance of Way
 Chief Engineering Officer