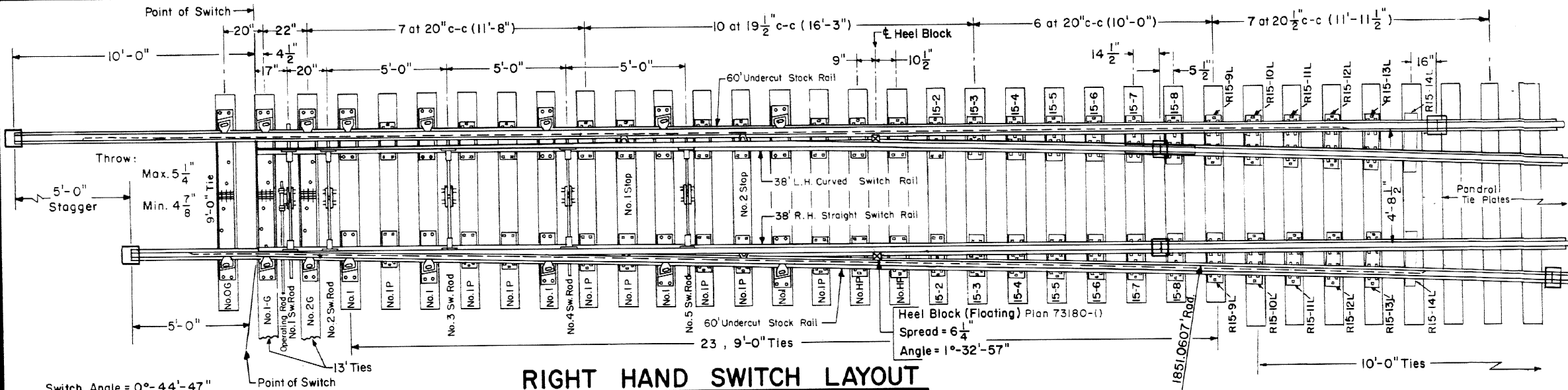


Revisions

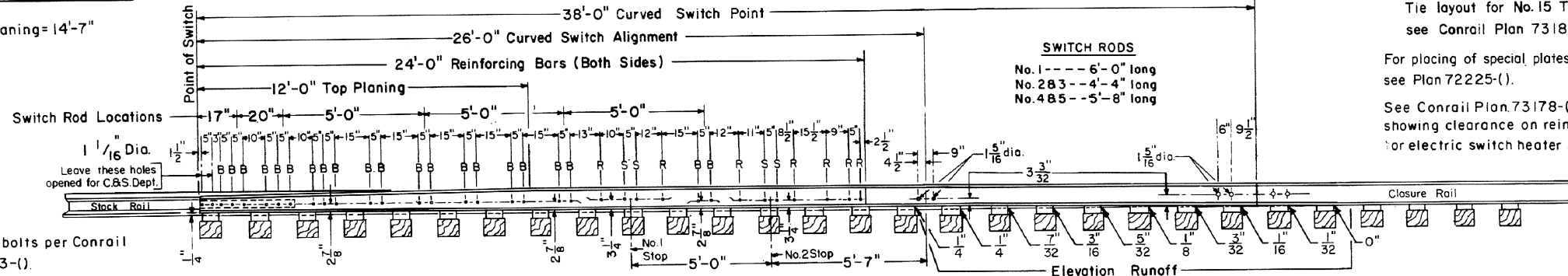
- B - May, 1980
- C - Dec., 1981
- D - Jun., 1983
- E - Sept., 1985
- F - Apr., 1986
- G - June, 1991
- H - March, 1993
- I - Dec., 1994
- J - July, 1996



RIGHT HAND SWITCH LAYOUT

Switch Angle = 0°-44'-47"

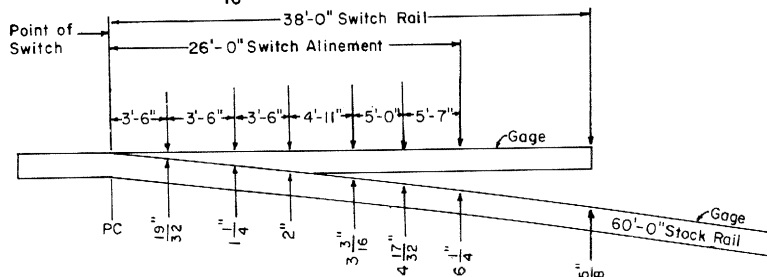
Side Planing = 14'-7"



ELEVATION OF SWITCH RAIL

All switch bolts per Conrail Plan 71503-().

- "B" = 1" dia. H.T. machine bolts with square nuts, spring washers and 1/4" cotter pins. Hex. nuts at rocker clips.
- "R" = 3/4" dia. rivets.
- "S" = 3/4" dia. machine bolts for stops with square nuts, spring washers and 3/16" cotter pins.



SWITCH OFFSETS

NOTES

- 1- This plan is for use with A.R.E.A. recommended standards for I32R.E./I36R.E.
- 2- Workmanship and materials shall be as per current A.R.E.A. Specifications.
- 3- Gage Plate OG, I-G and 2G are as shown on Conrail Plan 73522-().
- 4- Switch Plates No 1, HP, IP are as shown on Conrail Plan 73522-().
- 5- Turnout Plates No 2 thru No.14 are as shown on Conrail Plan 72225-().
- 6- Stock Rails to be undercut as per Conrail Plan 73062-().
- 7- Switch Rail to be undercut per A.R.E.A. Design 5100.
- 8- All rails to be Fully Heat Treated, and meet CR MW180 Spec.
- 9- Vertical insulated switch rods and adjustable rocker clips as per Conrail Plan 73516-().
- 10- All rails, including switch rails, to be drilled per Conrail Plan 71015-() or Plan 71016-(), except that first hole is not to be drilled by the manufacturer. Conrail forces to field drill first hole when necessary.
- 11- See Conrail Plan 73184-(), sheet 2, for Bill of Material

Tie layout for No. 15 Turnout see Conrail Plan 73186-().
 For placing of special plates 15-2 thru 15-14 see Plan 72225-().
 See Conrail Plan 73178-() for detail showing clearance on reinforcing bar for electric switch heater supports.

- Indicates Field Weld
- 12- All bolts shall be dipped immediately before applying (so that all threads are thoroughly coated) in NO-OX-ID "GG" grease manufactured by Dearborn Chemical Co.

73182-J

STANDARD
26' CURVED SPLIT SWITCH

38' SWITCH RAILS WITH FLOATING HEEL BLOCKS
FOR NO.15 WELDED TURNOUT

Chief Engineer-Maintenance of Way

JANUARY, 1978

 Chief Engineering Officer