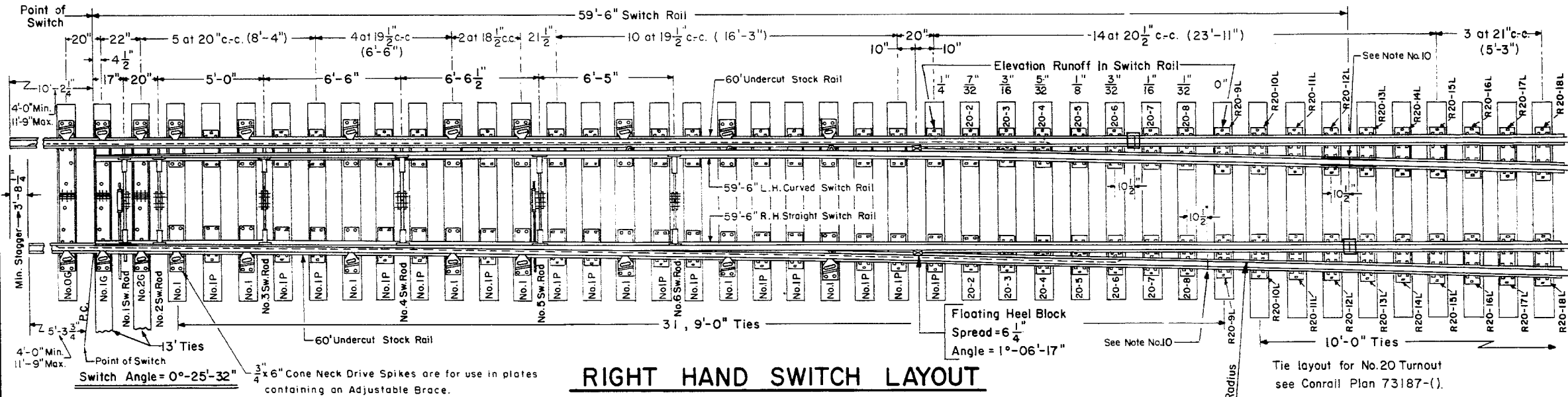
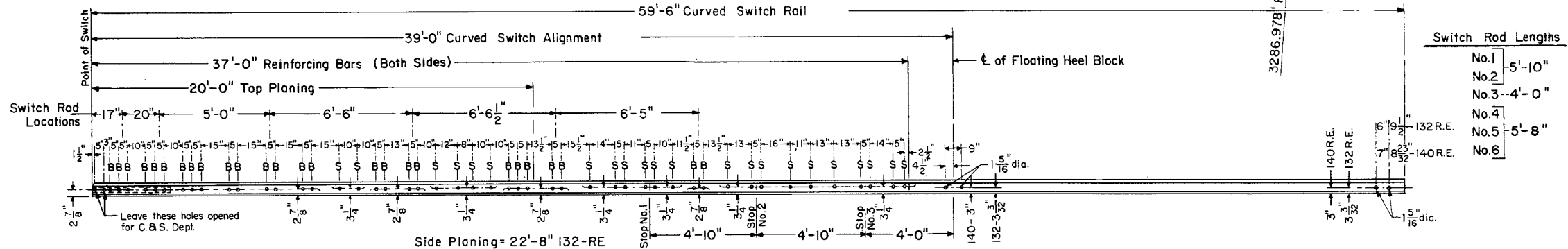


Revisions
 A - May, 1980
 B - Dec., 1981

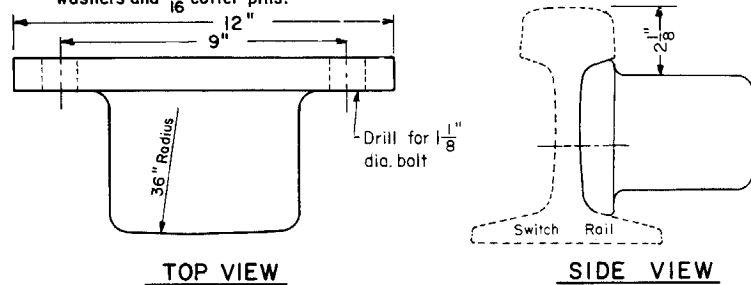


RIGHT HAND SWITCH LAYOUT



ELEVATION OF SWITCH RAIL

"B" = 1" dia. H.T. machine bolts with square nuts, spring washers and 1/4" cotter pins. Hex nuts at rocker clips.
 "S" = 3/4" dia. machine bolts for stops with square nuts, spring washers and 3/16" cotter pins.



FLOATING HEEL BLOCK

NOTES

- 1 - This plan is for use with A.R.E.A. recommended standards for 132-RE.
- 2 - Workmanship and materials shall be as per current A.R.E.A. Specifications.
- 3 - Gage Plates O-G, I-G and 2-G as shown on Conrail Plan 73513-().
- 4 - Switch Plates No.1 and No.1P as shown on Conrail Plan 73513-().
- 5 - Turnout Plates No.2 thru No.18 as shown on Conrail Plan 72221-().
- 6 - Stock Rails to be undercut as shown on Conrail Plan 73062-().
- 7 - Switch Rails to be undercut per A.R.E.A. Design 5100.
- 8 - Stock rails and switch points to be fully heat treated, all other rails to be end hardened.
- 9 - Vertical insulated switch rods and adjustable rocker clips as per Conrail Plan 73514-().
- 10 - All rails, including switch rails, to be drilled per Conrail Plan 71015-() for 132 R.E. rail, except that first hole is not to be drilled by the manufacturer. Conrail forces to field drill first hole when necessary.

Indicates Field Weld

11 - See Conrail Plan 73184-(), sheet 2, for Bill of Material.

73183-C

CONRAIL

STANDARD

39' CURVED SPLIT SWITCH

59'-6" SWITCH RAILS WITH FLOATING HEEL BLOCKS

FOR NO.20 WELDED TURNOUT - 132 R.E. RAIL

JANUARY, 1978

Chief Engineer - Maintenance of Way
 Chief Engineering Officer