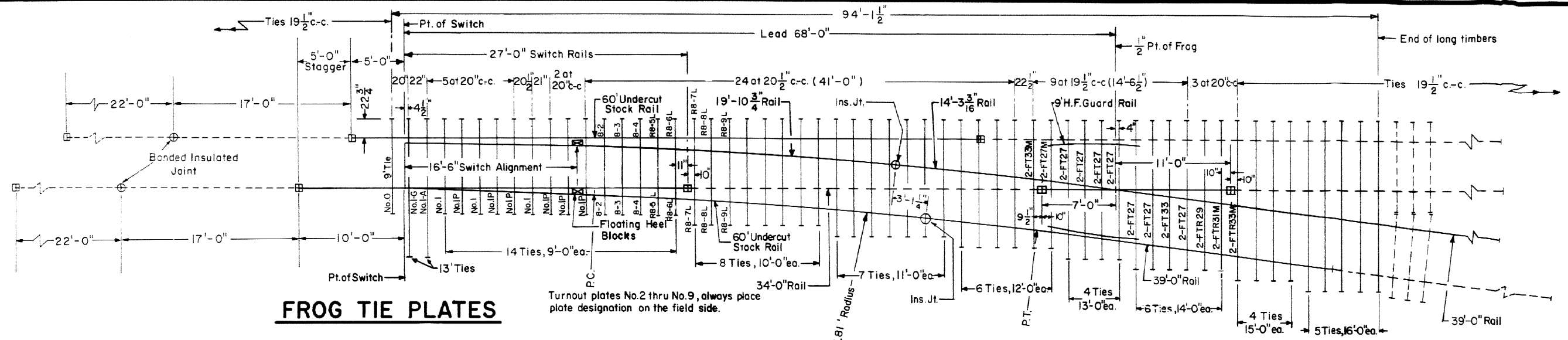


Revisions

- B-Aug., 1978
- C-Jan., 1980
- D-May, 1980
- E-Dec., 1981
- F-Jun., 1983
- G-Feb., 1984
- H-Apr., 1986



FROG TIE PLATES

- 14 - FT 27
 - 2 - FT 27 Modified
 - 2 - FT 33
 - 2 - FT 33 Modified
 - 2 - FTR 29
 - 2 - FTR 31 Modified
 - 2 - FTR 33 Modified
- Plan 72105-()

NOTES

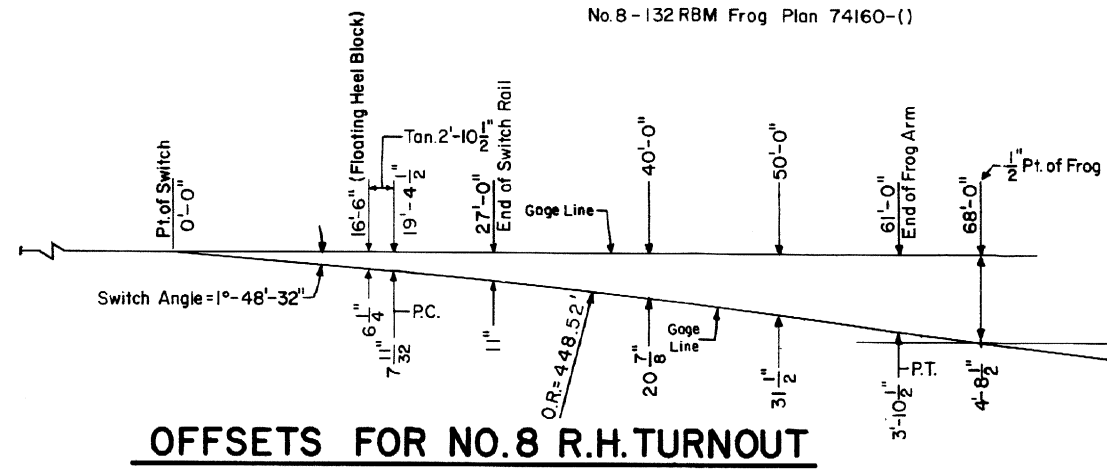
- 1 - All rails to be Fully Heat Treated.
- 2 - Switch rails to be samson.
- 3 - 60' stock rails to be undercut as per Plan 73062-().
- 4 - For switch details see Plan 73180-().
- 5 - Gage plate No. 1-G as per Plan 73519-().
- 6 - Switch plates Nos. 0, 1, 1-A and 1-P as per Plan 73519-().
- 7 - Turnout plates No. 2 thru No. 9, as per Plan 72220-().
- 8 - Vertical insulated switch rods and adjustable rocker clips, generally as per Plan 73518-().
- 9 - Floating heel block, as per Plan 73180-().
- 10 - All rails, including switch rails, to be drilled per Conrail Plan 71015-() for 132 R.E. rail, except that first hole is not to be drilled by the manufacturer. Conrail forces to field drill first hole when necessary.
- 11 - The rails on the turnout side are bolted joints.
- 12 - See Conrail Plan 73184-(), sheet 2, for Bill of Material.

LEGEND

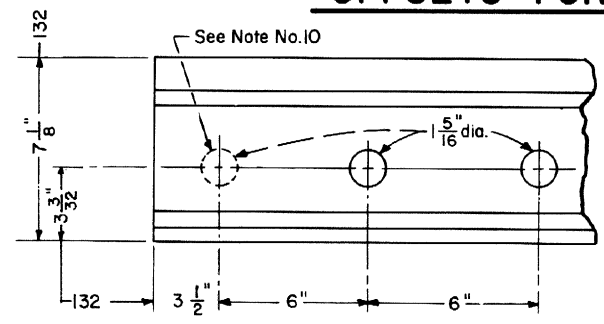
- Indicates rails furnished by the manufacturer.
- - - Indicates rails furnished by Conrail.
- ⊕ Indicates standard bolted joint with $\frac{1}{8}$ " opening.
- ⊕ Indicates insulated joints with $\frac{1}{4}$ " opening.
- ⊞ Indicates field welded joints.

LONG TIMBERS REQUIRED

QUANTITY	LENGTH
15	9'-0"
8	10'-0"
7	11'-0"
6	12'-0"
6	13'-0"
6	14'-0"
4	15'-0"
5	16'-0"
57	Total



OFFSETS FOR NO. 8 R.H. TURNOUT



RAIL END DRILLING

CONRAIL **73184-H**
Sheet 1 of 2

STANDARD
**NO. 8 WELDED TURNOUT
TIE AND RAIL LAYOUT-132 R.E.**
JANUARY, 1978

R.H. Smith
Chief Engineer - Maintenance of Way
A.S. Gordon
Chief Engineering Officer