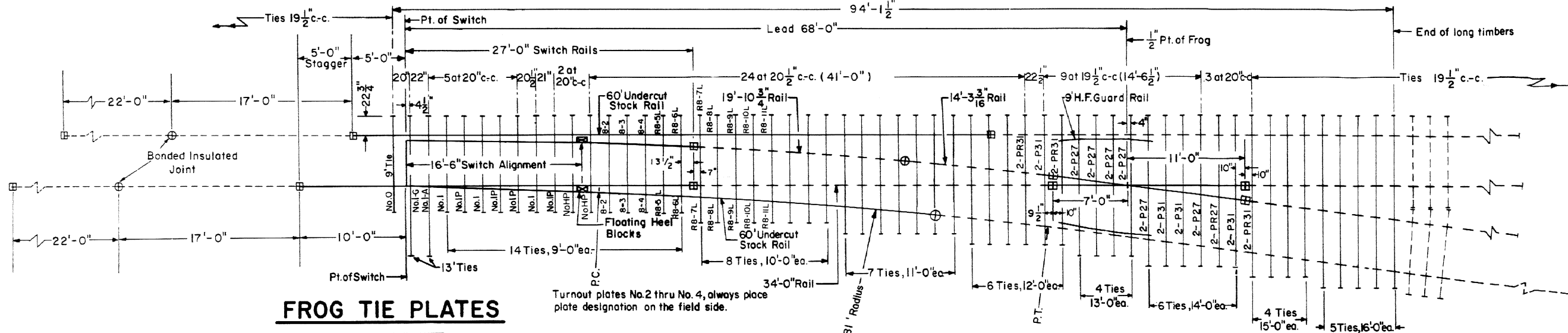


Revisions

- B-Aug.,1978
- C-Jan.,1980
- D-May,1980
- E-Dec.,1981
- F-Jun.,1983
- G-Feb.,1984
- H-Apr.,1986
- I-Dec.,1987
- J-June,1991
- K-March,1993
- L-Sept,1994
- M-Dec.1994



FROG TIE PLATES

- 12 - P27 SAS Plates
- 8 - P31 SAS Plates
- 2 - PR27 SAS Plates
- 6 - PR31 SAS Plates

CR Plan 72223 - ()

LEGEND

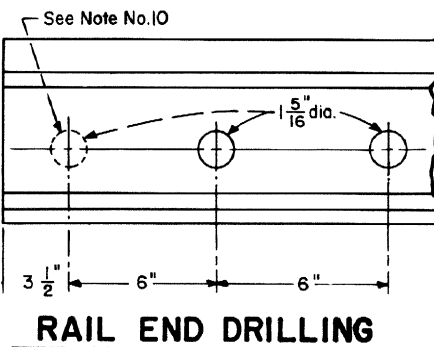
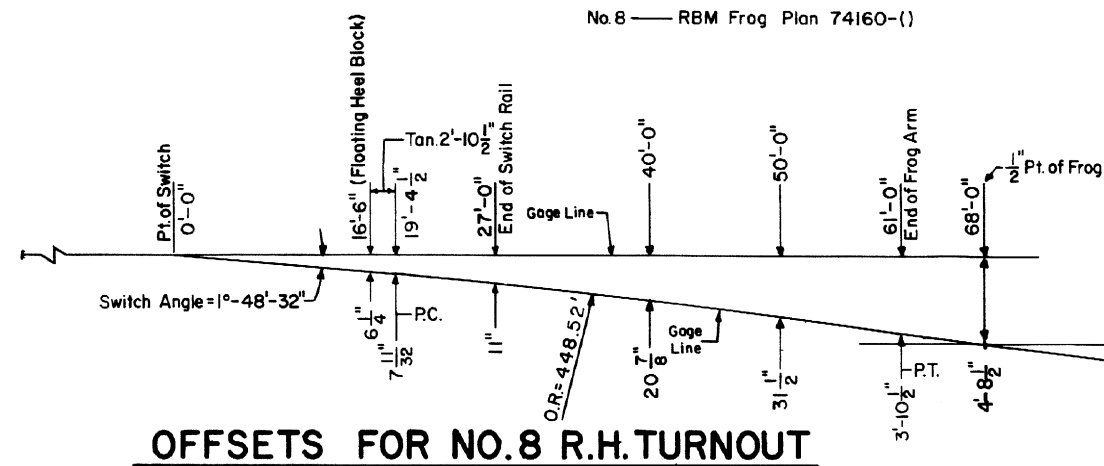
- Indicates rails furnished by the manufacturer.
- - - - Indicates rails furnished by Conrail.
- + Indicates standard bolted joint with $\frac{1}{8}$ " opening.
- ⊕ Indicates Bonded Insulated Joint
- ⊞ Indicates field welded joints.

NOTES

- 1 - All rails to be Fully Heat Treated and meet CR MW180 Spec.
- 2 - Switch rails to be samson.
- 3 - 60' stock rails to be undercut as per Plan 73062 - ().
- 4 - For switch details see Plan 73180 - ().
- 5 - Gage plate No.1-G as per Plan 73522 - ().
- 6 - Switch plates Nos.0,1,I-A,HP,I-P as per Plan 73522 - ().
- 7 - Turnout plates No.2 thru No.11, as per Plan 72222 - ().
- 8 - Vertical insulated switch rods and adjustable rocker clips, generally as per Plan 73518 - ().
- 9 - Floating heel block, as per Plan 73180 - ().
- 10 - All rails, including switch rails, to be drilled per Conrail Plan 71015 - () or 71016 - (), except that first hole is not to be drilled by the manufacturer. Conrail forces to field drill first hole when necessary.
- 11 - See Conrail Plan 73184 - (), sheet 2, for Bill of Material.

LONG TIMBERS REQUIRED

QUANTITY	LENGTH
15	9'-0"
8	10'-0"
7	11'-0"
6	12'-0"
6	13'-0"
6	14'-0"
4	15'-0"
5	16'-0"
57	Total



CONRAIL
STANDARD

73184-M
Sheet 1 of 2

**NO. 8 WELDED TURNOUT
TIE AND RAIL LAYOUT**

JANUARY, 1978

R.H. Smith
Chief Engineer - Maintenance of Way

A.S. Gordon
Chief Engineering Officer