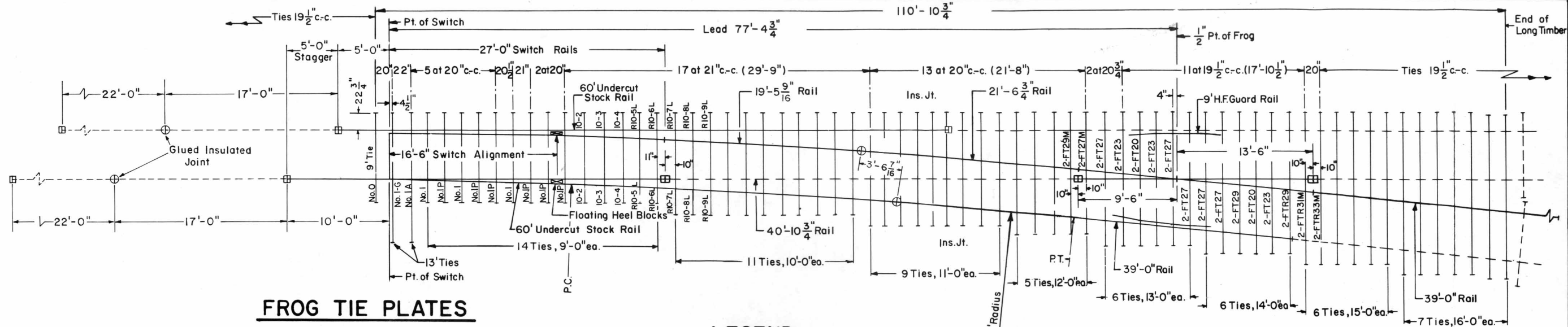


Revisions  
 B-Aug.,1978  
 C-May,1980  
 D-Dec.,1981  
 E-Jun.,1983



**FROG TIE PLATES**

- 4 - FT 20
  - 6 - FT 23
  - 10 - FT 27
  - 2 - FT 27 Modified
  - 2 - FT 29
  - 2 - FT 29 Modified
  - 2 - FTR 29
  - 2 - FTR 31 Modified
  - 2 - FTR 33 Modified
- Plan 72105-()

**NOTES**

- 1 - Stock rails and switch points fully heat treated, all other rails end hardened.
- 2 - Switch rails to be samson.
- 3 - 60' stock rails, to be undercut as per Plan 73062-().
- 4 - For switch details see Plan 73181-().
- 5 - Gage plate No. I-G as per Plan 73519-().
- 6 - Switch plates Nos. O, I, IA and IP as per Plan 73519-().
- 7 - Turnout plates, No. 2 thru No. 9, as per Plan 72220-().
- 8 - Vertical insulated switch rods and adjustable rocker clips, generally as per Plan 73518-().
- 9 - Floating heel block, as per Plan 73181-().
- 10 - All rails, including switch rails, to be drilled per Conrail Plan 71015-() for 132 R.E. rail, except that first hole is not to be drilled by the manufacturer. Conrail forces to field drill first hole when necessary.
- 11 - The rails on the turnout side are bolted joints.
- 12 - See Conrail Plan 73184-(), sheet 2, for Bill of Material

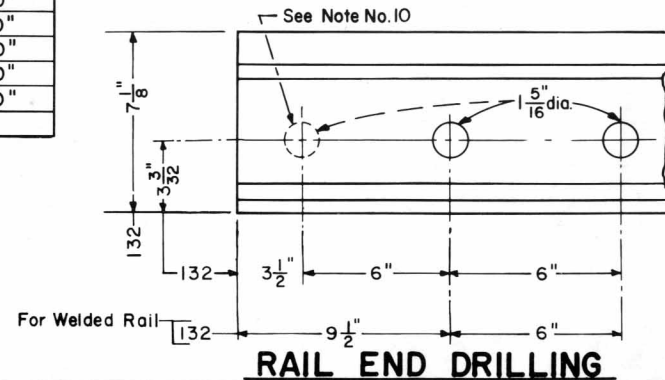
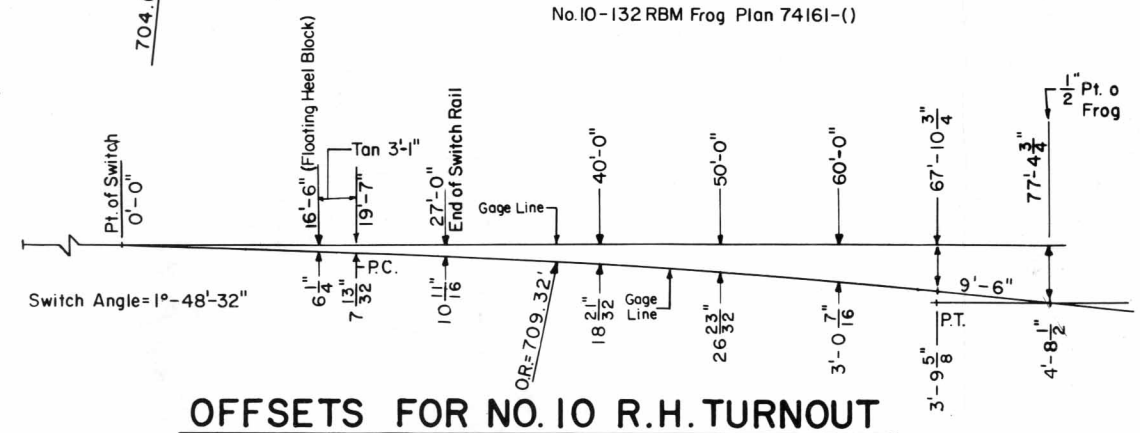
**LEGEND**

- Indicates rails furnished by the manufacturer.
- - - Indicates rails furnished by Conrail.
- + Indicates standard bolted joint with 1/8" opening.
- ⊕ Indicates insulated joints with 1/4" opening.
- ⊞ Indicates field welded joints.

**LONG TIMBERS REQUIRED**

| QUANTITY | LENGTH |
|----------|--------|
| 15       | 9'-0"  |
| 11       | 10'-0" |
| 9        | 11'-0" |
| 5        | 12'-0" |
| 8        | 13'-0" |
| 6        | 14'-0" |
| 6        | 15'-0" |
| 7        | 16'-0" |
| 67       | Total  |

**OFFSETS FOR NO. 10 R.H. TURNOUT**





**CONRAIL 73185-E**

STANDARD

**NO. 10 WELDED TURNOUT  
TIE AND RAIL LAYOUT-132 R.E.**

JANUARY, 1978

 Chief Engineer - Maintenance of Way  
 Chief Engineering Officer