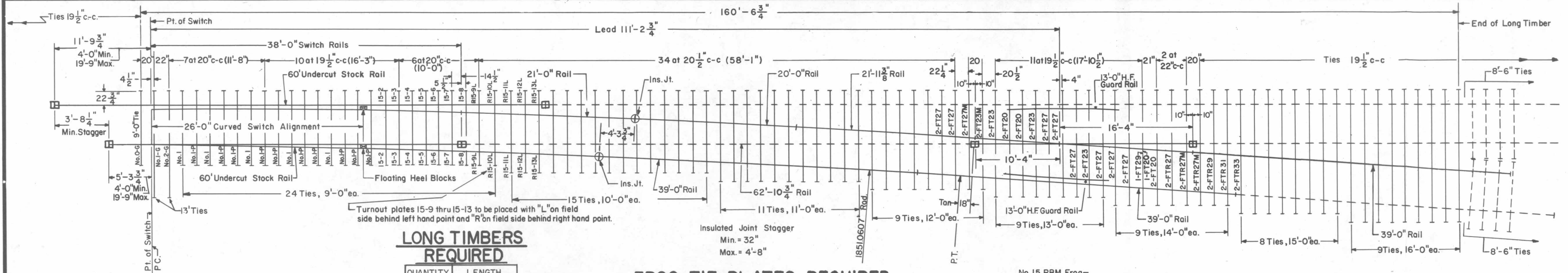


Revisions
 A - Aug., 1978
 B - May, 1980
 C - Dec., 1981



LONG TIMBERS REQUIRED

QUANTITY	LENGTH
25	9'-0"
15	10'-0"
11	11'-0"
9	12'-0"
11	13'-0"
9	14'-0"
8	15'-0"
9	16'-0"
97	Total

FROG TIE PLATES REQUIRED

- 7 - FT 20
- 6 - FT 23
- 2 - FT 23 Modified
- 16 - FT 27
- 2 - FT 27 Modified
- 1 - FT 29
- 2 - FTR 27
- 4 - FTR 27 Modified
- 2 - FTR 29
- 2 - FTR 31
- 2 - FTR 33
- 46 Total

Plan 72105-()

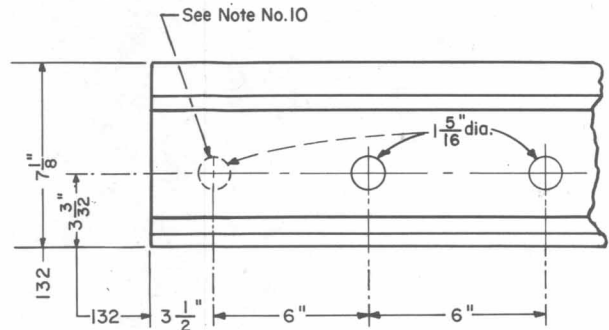
No. 15 RBM Frog - Plan No. 74162-() 132 R.E.

LEGEND

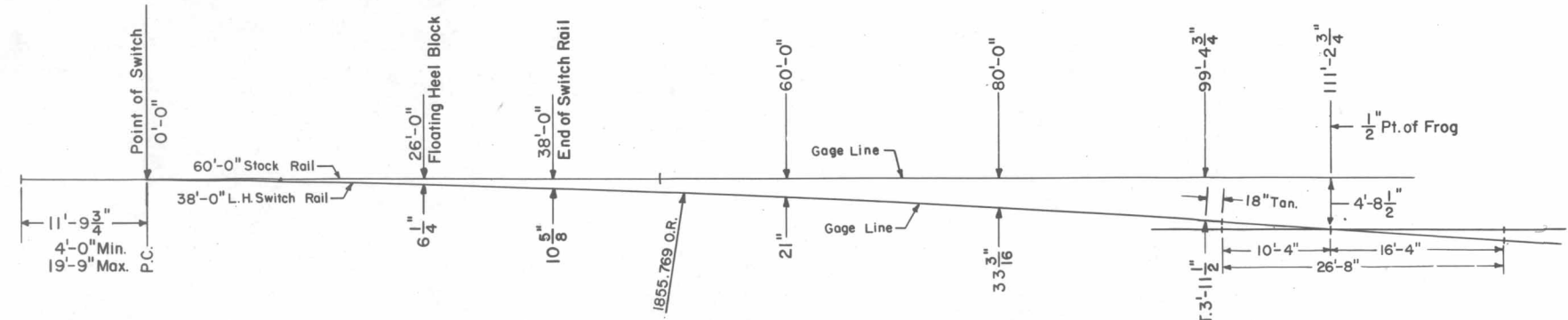
- ⊕ Indicates standard bolted joint with 1/8" opening
- ⊕ Indicates insulated joints with 1/4" opening.
- ⊞ Indicates field welded joints.
- Indicates rails furnished by the manufacturer.
- - - - Indicates rails furnished by Conrail.

NOTES

- 1 - Stock rails and switch points to be fully heat treated, all other rails to be end hardened.
- 2 - Switch rails to be samson.
- 3 - 60' stock rails, to be undercut as per Plan 73062-().
- 4 - For switch detail see Plan 73182-().
- 5 - Gage plates O-G, I-G and 2-G as per Plan 73517-().
- 6 - Switch plates Nos. 1 and I-P as per Plan 73517-().
- 7 - Turnout plates, No. 2 thru No. 13 as per Plan 72221-().
- 8 - Vertical insulated switch rods and adjustable rocker clips, generally as per Plan 73516-().
- 9 - Floating heel block, as per Plan 73182-().
- 10 - All rails, including switch rails, to be drilled per Conrail Plan 71015-() for 132 R.E. rail, except that first hole is not to be drilled by the manufacturer. Conrail forces to field drill first hole when necessary.
- 11 - The rails on the turnout side are bolted joints.
- 12 - See Conrail Plan 73184-(), sheet 2, for Bill of Material.



RAIL END DRILLING



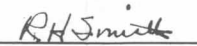
OFFSETS FOR NO. 15 R.H. TURNOUT


CONRAIL 73186-D

STANDARD

**NO. 15 WELDED TURNOUT
TIE AND RAIL LAYOUT-132 R.E.**

JANUARY, 1978


 Chief Engineer-Maintenance of Way


 Chief Engineering Officer