

**NOTES**

- 1- Stock rails and switch points to be fully heat treated, all other rails to be end hardened.
- 2- Switch rails to be samson.
- 3- 60' stock rails, to be undercut as per Plan 73062-().
- 4- For switch detail see Plan 73182-().
- 5- Gage plates O-G, I-G and 2-G as per Plan 73517-().
- 6- Switch plates Nos. I and I-P as per Plan 73517-().
- 7- Turnout plates, No. 2 thru No. 13 as per Plan 72221-().
- 8- Vertical insulated switch rods and adjustable rocker clips, generally as per Plan 73516-().
- 9- Floating heel block, as per Plan 73182-().
- 10- All rails, including switch rails, to be drilled per Conrail Plan 71015-() for 132 R.E. rail, except that first hole is not to be drilled by the manufacturer. Conrail forces to field drill first hole when necessary.
- 11- See Conrail Plan 73184-(), sheet 2, for Bill of Material.
- 12- When a third insulated joint is required (as per Plan 71325-(), Sheet 2) weld the 22'-0" end of the 39'-0" Bonded Joint Plug to the end of the 60'-0" stock rail on the straight (Main Line) side.

**LONG TIMBERS REQUIRED**

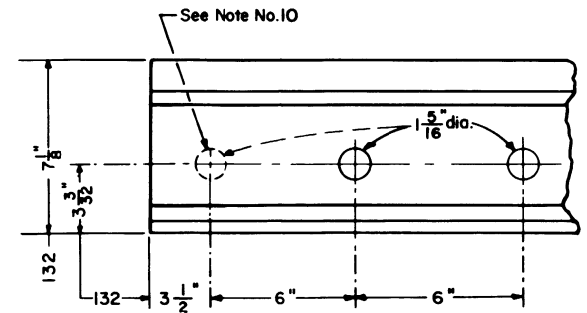
QUANTITY	LENGTH
25	9'-0"
15	10'-0"
11	11'-0"
9	12'-0"
11	13'-0"
9	14'-0"
8	15'-0"
9	16'-0"
97	Total

**FROG TIE PLATES REQUIRED**

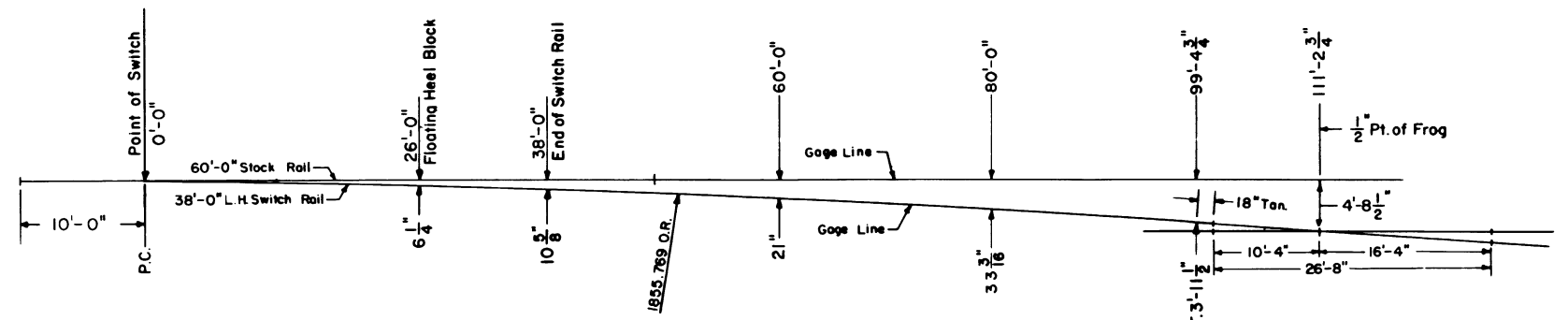
- 7 - FT 20
  - 6 - FT 23
  - 2 - FT 23 Modified
  - 16 - FT 27
  - 1 - FT 29
  - 2 - FTR 27
  - 4 - FTR 27 Modified
  - 2 - FTR 29
  - 2 - FTR 31
  - 2 - FTR 33
  - 46 Total
- Plan 72105-()

**LEGEND**

- ⊕ Indicates standard bolted joint with 1/8" opening
- ⊕ Indicates bonded insulated joints
- ⊕ Indicates field welded joints.
- Indicates rails furnished by the manufacturer.
- - - - Indicates rails furnished by Conrail.



**RAIL END DRILLING**



**OFFSETS FOR NO. 15 R. H. TURNOUT**

**CONRAIL 73186-F**

STANDARD

**NO. 15 WELDED TURNOUT  
TIE AND RAIL LAYOUT-132 R.E.**

JANUARY, 1978

R.H. Smith  
Chief Engineer - Maintenance of Way

J.P. Gordon  
Chief Engineering Officer