

NOTES

- All rails to be furnished not heat treated, end hardened or beveled.
- Switch rails to be undercut.
- 60' stock rails, are to be undercut as per Plan 73062-(-).
- Gage plates O-G, I-G and 2-G as per Plan 73513-(-).
- Switch plates Nos. 1 and I-P as per Plan 73513-(-).
- Turnout plates, No. 2 thru No. 18 as per Plan 72221-(-).
- Vertical insulated switch rods and adjustable rocker clips generally as per Plan 73514-(-).
- Floating heel block as per Plan 73183-(-).
- For switch details see Plan 73183-(-).
- All rails, including switch rails, to be drilled per Conrail Plan 71010-(-) for 140R.E. rail or Plan 71015-(-) for 132 R.E. rail, except that first hole is not to be drilled by the manufacturer. Conrail forces to field drill first hole when necessary.
- The rails on the turnout side are bolted joints.

LONG TIMBERS REQUIRED

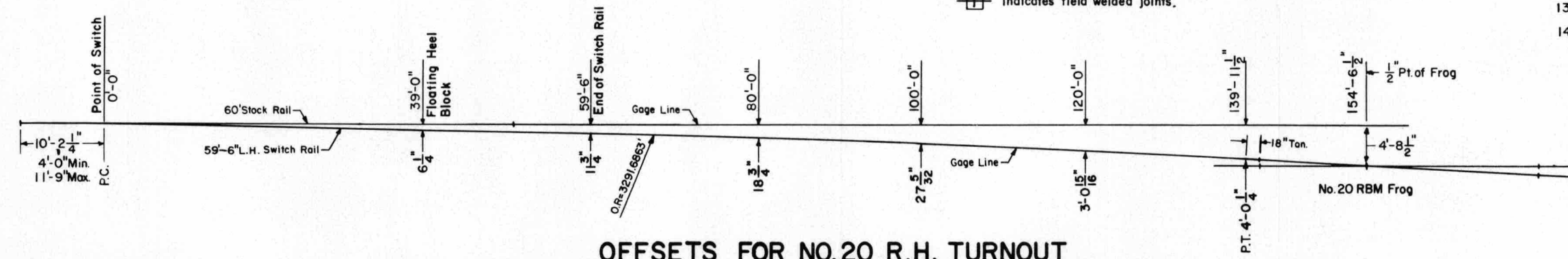
QUANTITY	LENGTH
32	9'-0"
26	10'-0"
12	11'-0"
12	12'-0"
16	13'-0"
13	14'-0"
11	15'-0"
12	16'-0"
134	Total

FROG TIE PLATES REQUIRED

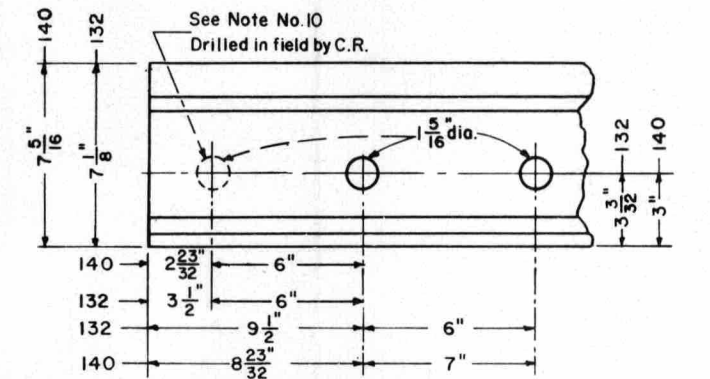
- 2 - FT 20
 - 14 - FT 23
 - 22 - FT 27
 - 4 - FT 27 Modified
 - 4 - FT 29
 - 2 - FTR 27
 - 4 - FTR 29 Modified
 - 2 - FTR 31
 - 6 - FTR 33
 - 60 Total
- Plan 72105-(-)

LEGEND

- Indicates rails furnished by the manufacturer.
- Indicates rails furnished by Conrail.
- Indicates standard bolted joint with 1/8" opening.
- Indicates insulated joints with 1/4" opening.
- Indicates field welded joints.



OFFSETS FOR NO. 20 R.H. TURNOUT



RAIL END DRILLING

CONRAIL 73187-B
 STANDARD
NO. 20 WELDED TURNOUT
TIE AND RAIL LAYOUT-132 & 140 RAIL
 JANUARY, 1978
 Chief Engineer - Maintenance of Way
 Chief Engineering Officer