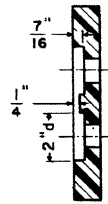


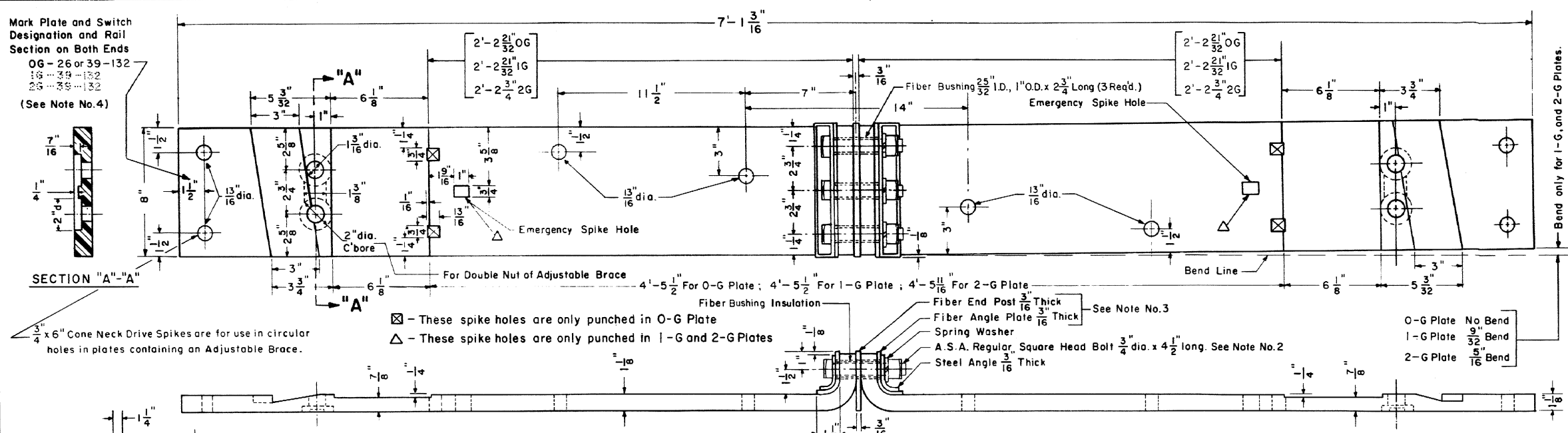
Revisions
 B- Jan. 1978
 C- Oct. 1980
 D- Dec. 1981
 E- Dec. 1987

Mark Plate and Switch Designation and Rail Section on Both Ends
 OG - 26 or 39-132
 1G - 39-132
 2G - 39-132
 (See Note No. 4)



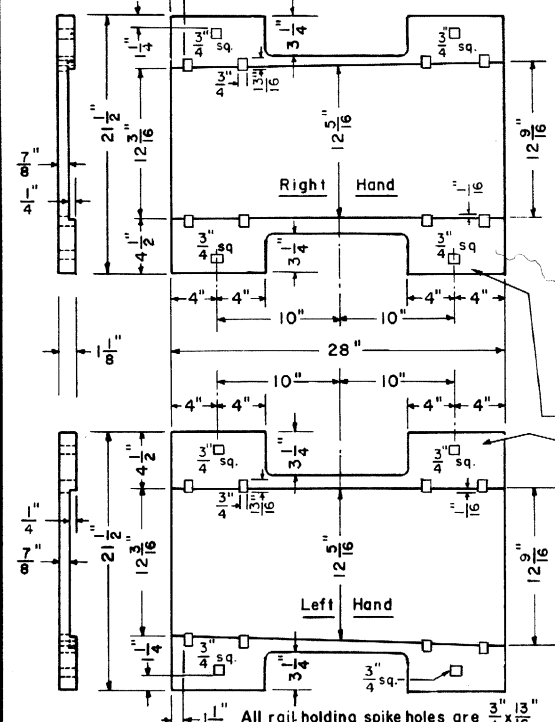
SECTION "A"-A

3/4 x 6" Cone Neck Drive Spikes are for use in circular holes in plates containing an Adjustable Brace.



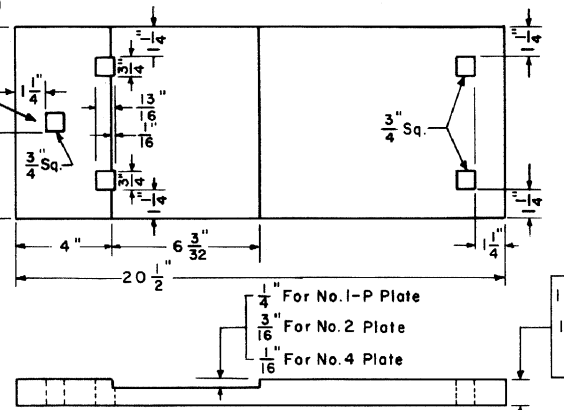
☒ - These spike holes are only punched in O-G Plate
 △ - These spike holes are only punched in 1-G and 2-G Plates

NO. 0-G, NO. 1-G & NO. 2-G INSULATED GAGE PLATES



NO. SH (R.H. & L.H.) HEEL PLATES

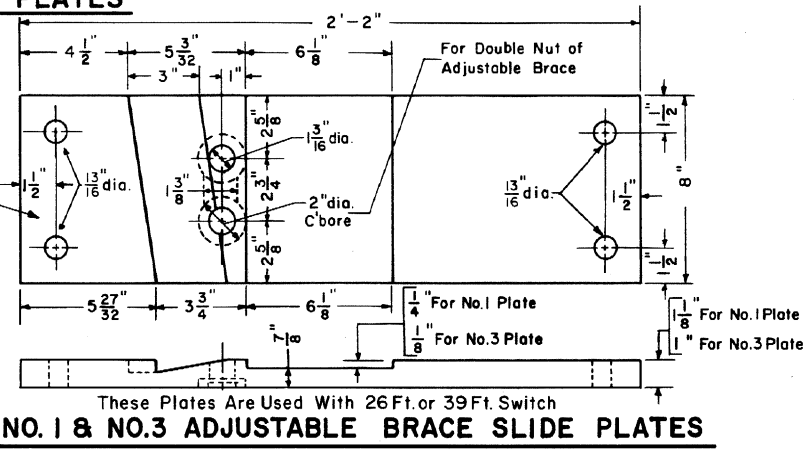
Mark Plate Designation and Rail Section
 1P-132
 (See Note No. 4)



NO. 1-P, NO. 2 & NO. 4 SHOULDER SLIDE PLATES

NOTES:

- 1 - Switch Plates shall conform to current A.R.E.A. Specifications for Low-Carbon Steel Tie Plates, with copper.
- 2 - All gage plate bolts shall have A.S.A. Regular square heads and A.S.A. Heavy square nuts. All bolts shall be carbon-steel with medium-carbon steel nuts and conform to current A.R.E.A. "Specifications for Heat-Treated Carbon-Steel Track Bolts and Carbon Steel Nuts."
- 3 - All fiber parts shall conform to current A.A.R. Signal Section Manual, Part 58, Specification No. 13 for "Hard Fiber" and A.A.R. Signal Section Manual, Part No. 178 covering "Requisites for Fabricated Fiber Parts for Track Insulation."
- 4 - Each plate shall be marked by deeply cut characters, not less than 1/2" high, in the position as indicated on this plan.



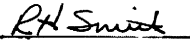
NO. 1 & NO. 3 ADJUSTABLE BRACE SLIDE PLATES


73513-E

CONRAIL

STANDARD

SWITCH PLATES and GAGE PLATES
 FOR 39'-0" SWITCH-132 LB RAIL
 OCTOBER, 1976


 Chief Engineer - Maintenance of Way


 Chief Engineering Officer