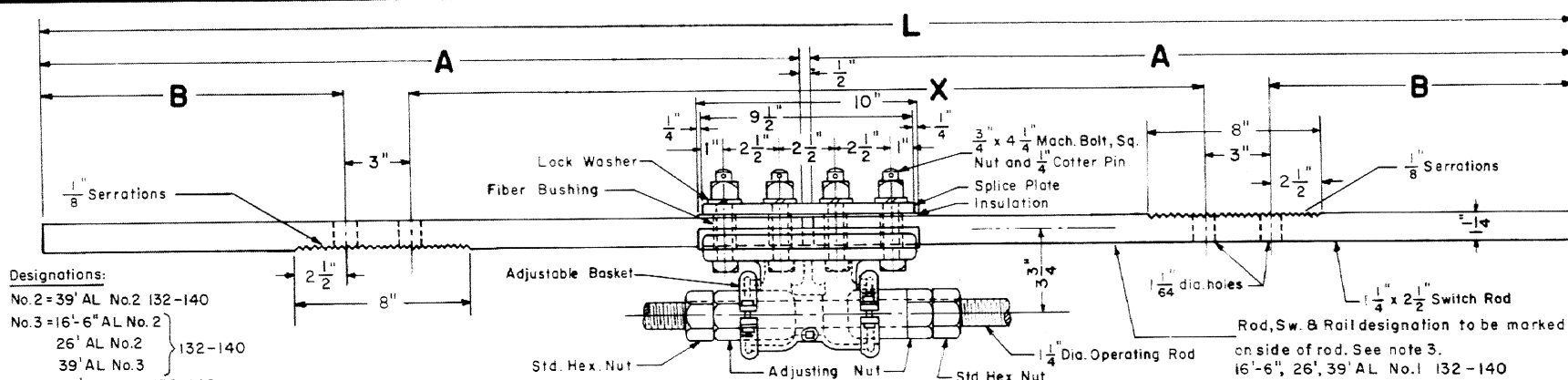
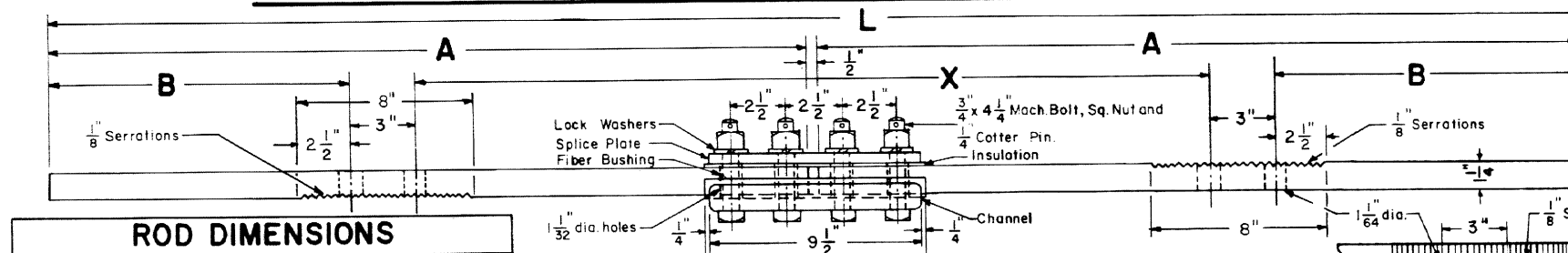


Revised
 B - Jan. 1978
 C - Mar. 1980
 D - Oct. 1983
 E - May, 1986



- Designations:
- No. 2 = 39' AL No. 2 132-140
 - No. 3 = 16'-6" AL No. 2 } 132-140
 - 26' AL No. 2
 - 39' AL No. 3
 - No. 4 = 39' AL No. 4 132-140
 - No. 6 = 39' AL No. 6 132-140

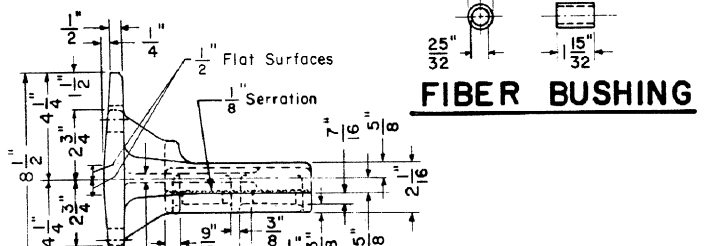
INSULATED SWITCH RODS NO. 1 & NO. 5 WITH ADJUSTABLE BASKET



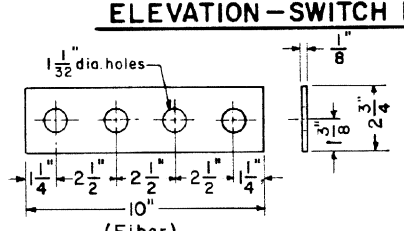
ROD DIMENSIONS				
ROD NO.	L	X	A	B
1	5'-10"	2'-11 ⁷ / ₈ "	2'-10 ³ / ₄ "	14 ¹ / ₁₆ "
2	5'-10"	2'-11 ⁷ / ₈ "	2'-10 ³ / ₄ "	14 ¹ / ₁₆ "
3	4'-4"	3'-0 ¹¹ / ₃₂ "	2'-1 ³ / ₄ "	4 ⁵³ / ₆₄ "
4	5'-10"	3'-1 ⁷ / ₁₆ "	2'-10 ³ / ₄ "	13 ⁹ / ₃₂ "
5	5'-10"	3'-2 ⁷ / ₁₆ "	2'-10 ³ / ₄ "	12 ²⁵ / ₃₂ "
* 6	5'-10"	3'-2 ⁷ / ₁₆ "	2'-10 ³ / ₄ "	12 ²⁵ / ₃₂ "

INSULATED SWITCH RODS-NOS. 2, 3, 4 & 6*

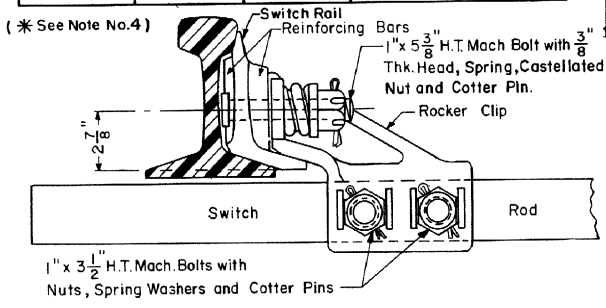
(See Note No. 4)



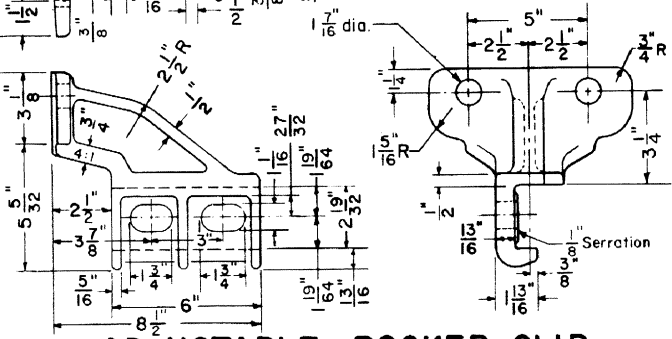
FIBER BUSHING



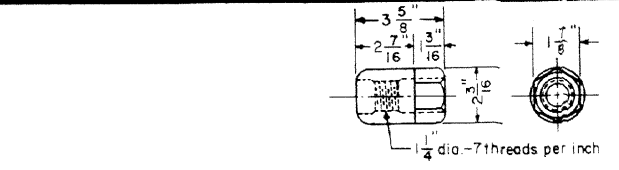
INSULATION PLATE FOR SPLICE PLATE



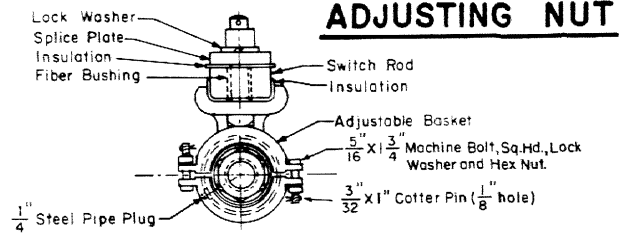
ASSEMBLED ROCKER CLIP



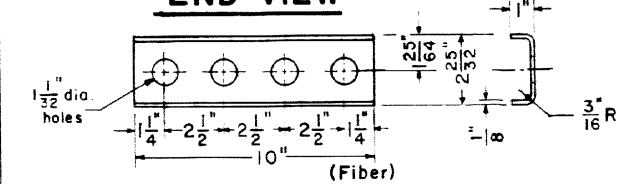
ADJUSTABLE ROCKER CLIP



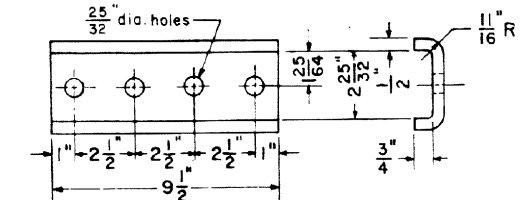
ADJUSTING NUT



END VIEW



INSULATION FOR CHANNEL



CHANNEL-STEEL

NOTES

- 1- All switch rods shall conform to current A.R.E.A. Specifications.
- 2- All fiber parts shall conform to current A.A.R. Signal Section Manual, Part 58, Specifications 13 - Hard Fiber.
- 3- Each switch rod shall be marked with deeply cut characters, not less than 1/2\"/>

CONRAIL **73514-E**

STANDARD
**VERTICAL SWITCH RODS
 AND ADJUSTABLE ROCKER CLIPS**
 FOR 39'-0" SWITCH-132 LB. OR 140 LB. R.E. RAIL
 OCTOBER 1976

R.H. Smith
Chief Engineer - Maintenance of Way
A.B. Gordon
Chief Engineering Officer