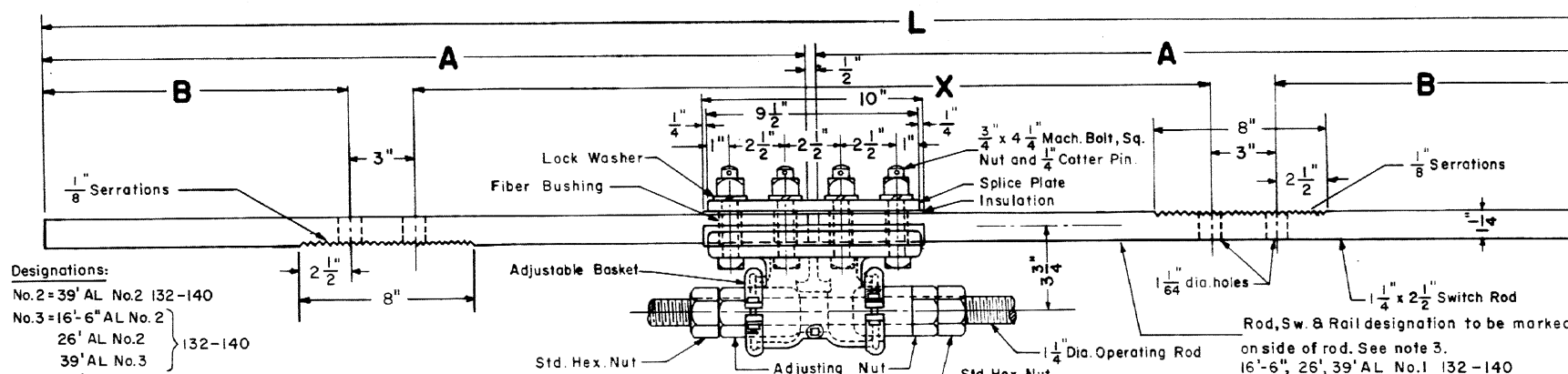
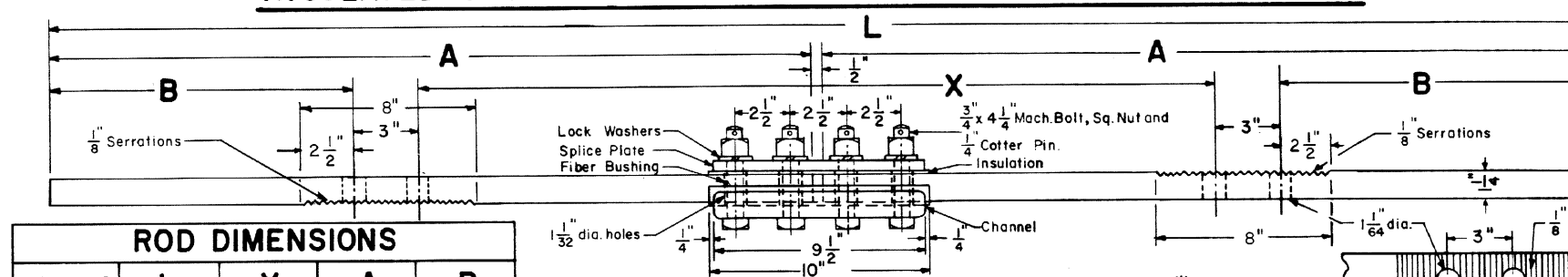


Revised
 B - Jan. 1978
 C - Mar. 1980
 D - Oct. 1983
 E - May, 1986
 F - Sept., 1987



Designations:
 No. 2 = 39' AL No. 2 132-140
 No. 3 = 16'-6" AL No. 2
 26' AL No. 2 } 132-140
 39' AL No. 3
 No. 4 = 39' AL No. 4 132-140
 No. 6 = 39' AL No. 6 132-140

INSULATED SWITCH RODS NO. 1 & NO. 5 WITH ADJUSTABLE BASKET

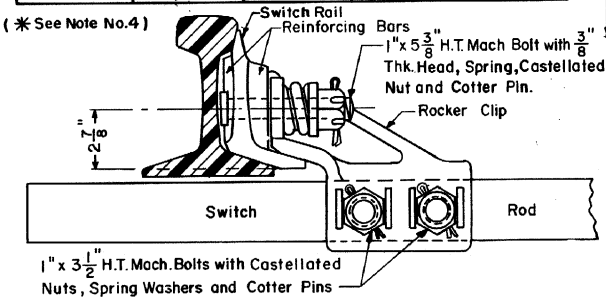


INSULATED SWITCH RODS-NOS. 2, 3, 4 & 6*

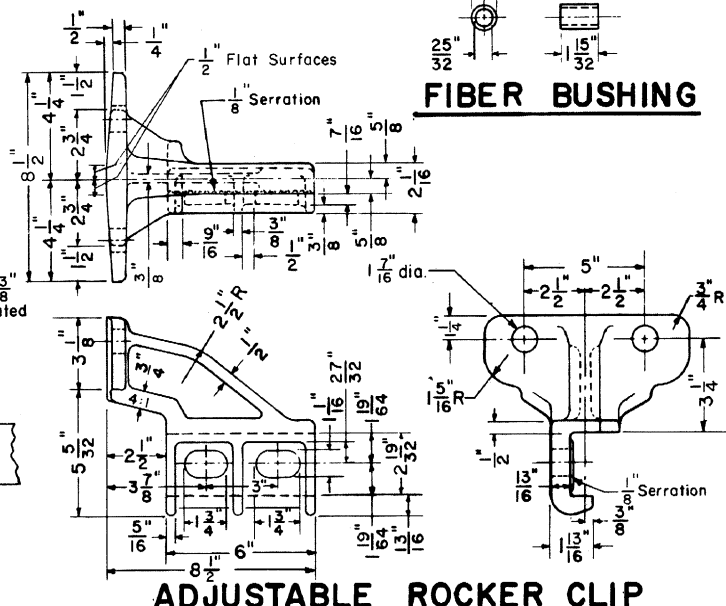
(See Note No. 4)

ROD DIMENSIONS				
ROD NO.	L	X	A	B
1	5'-10"	2'-11 7/8"	2'-10 3/4"	14 1/16"
2	5'-10"	2'-11 7/8"	2'-10 3/4"	14 1/16"
3	4'-4"	3'-0 11/32"	2'-1 3/4"	4 53/64"
4	5'-10"	3'-1 7/16"	2'-10 3/4"	13 9/32"
5	5'-10"	3'-2 7/16"	2'-10 3/4"	12 25/32"
* 6	5'-10"	3'-2 7/16"	2'-10 3/4"	12 25/32"

(* See Note No. 4)

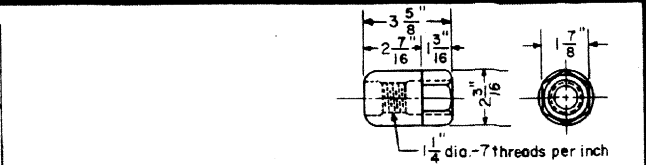


ASSEMBLED ROCKER CLIP

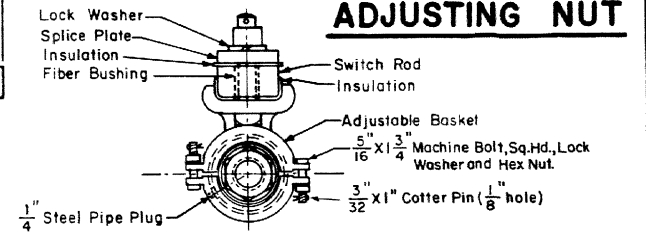


FIBER BUSHING

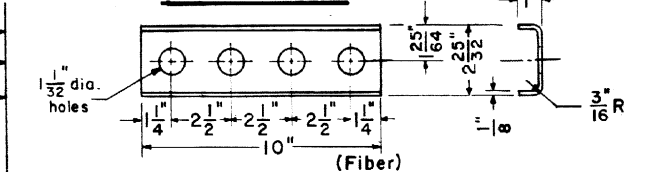
ADJUSTABLE ROCKER CLIP



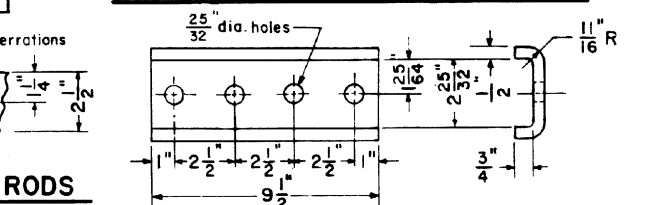
ADJUSTING NUT



END VIEW

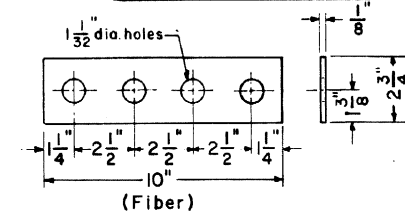


INSULATION FOR CHANNEL

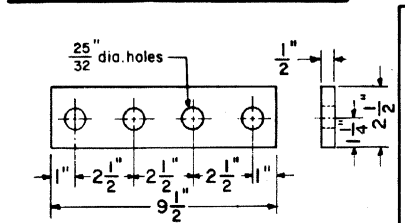


CHANNEL-STEEL

ELEVATION - SWITCH RODS



INSULATION PLATE FOR SPLICE PLATE



SPLICE PLATE

NOTES

- 1- All switch rods shall conform to current A.R.E.A. Specifications.
- 2- All fiber parts shall conform to current A.R. Signal Section Manual, Part 58, Specifications 13 - Hard Fiber.
- 3- Each switch rod shall be marked with deeply cut characters, not less than 1/2" high, with rod designation and rail section.
- * 4- No. 6 switch rod is only required on switches for welded turnouts.

CONRAIL 73514-F

STANDARD

VERTICAL SWITCH RODS AND ADJUSTABLE ROCKER CLIPS

FOR 39'-0" SWITCH-132 LB. OR 140 LB. R. E. RAIL

OCTOBER 1976

R.H. Smith
 Chief Engineer - Maintenance of Way

A.C. Lyndon
 Chief Engineering Officer