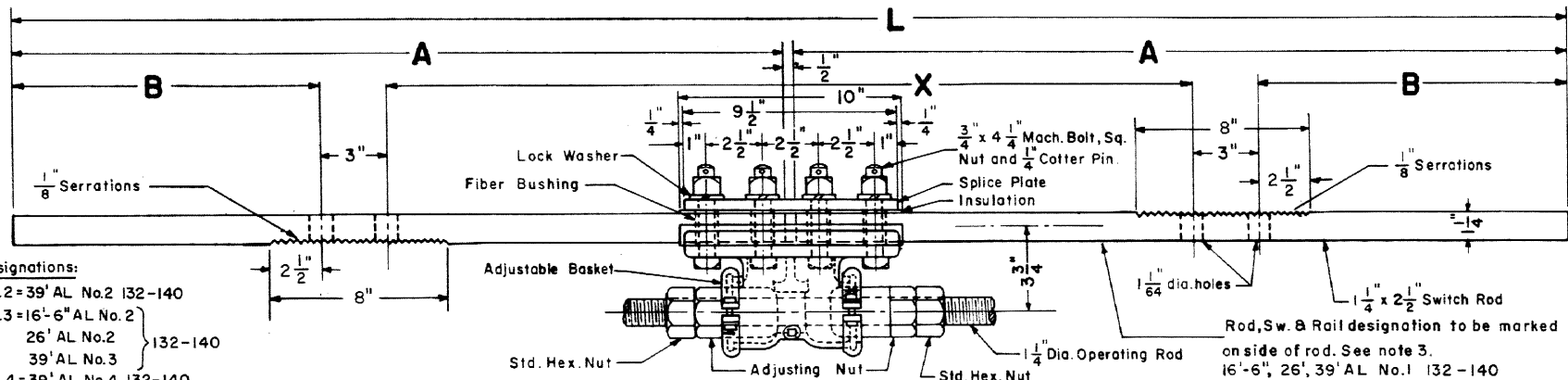
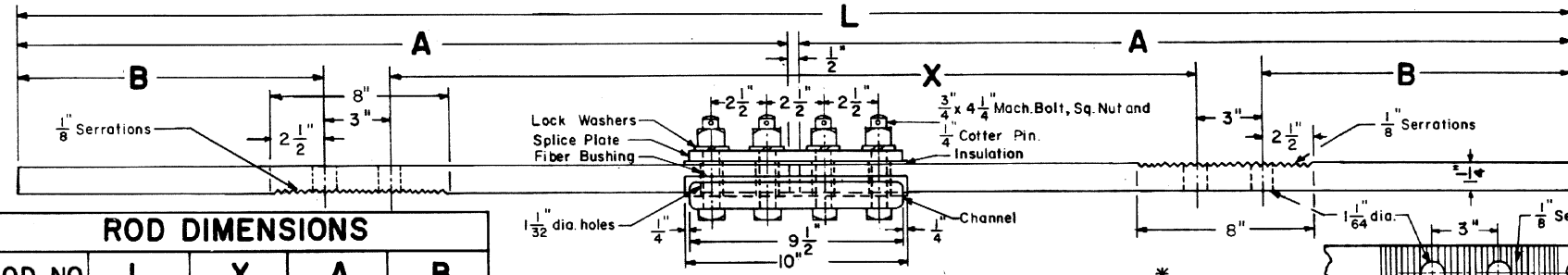


Revised
 B-Jan. 1978
 C-Mar. 1980
 D-Oct. 1983
 E-May, 1986
 F-Sept., 1987
 G-Jan., 1990



Designations:
 No. 2 = 39' AL No. 2 132-140
 No. 3 = 16'-6" AL No. 2
 26' AL No. 2 } 132-140
 39' AL No. 3 }
 No. 4 = 39' AL No. 4 132-140
 No. 6 = 39' AL No. 6 132-140

INSULATED SWITCH RODS NO. 1 & NO. 5 WITH ADJUSTABLE BASKET

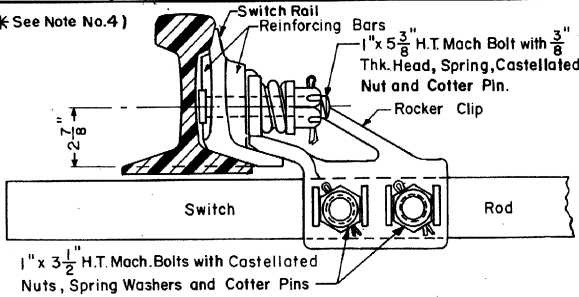


INSULATED SWITCH RODS-NOS. 2, 3, 4 & 6*

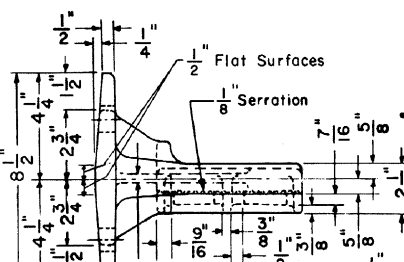
(See Note No. 4)

ROD DIMENSIONS				
ROD NO.	L	X	A	B
1	5'-10"	2'-11 7/8"	2'-10 3/4"	14 1/16"
2	5'-10"	2'-11 7/8"	2'-10 3/4"	14 1/16"
3	4'-4"	3'-0 11/32"	2'-1 3/4"	4 53/64"
4	5'-10"	3'-1 7/16"	2'-10 3/4"	13 9/32"
5	5'-10"	3'-2 7/16"	2'-10 3/4"	12 25/32"
* 6	5'-10"	3'-2 7/16"	2'-10 3/4"	12 25/32"

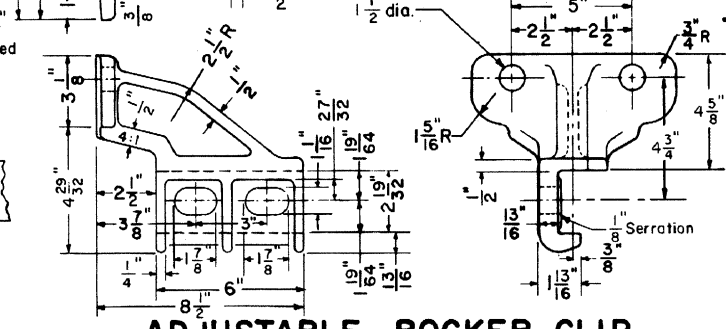
(* See Note No. 4)



ASSEMBLED ROCKER CLIP

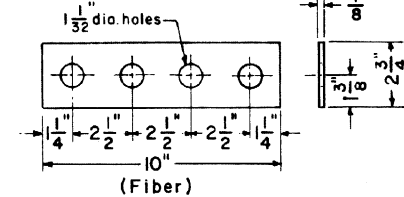


FIBER BUSHING

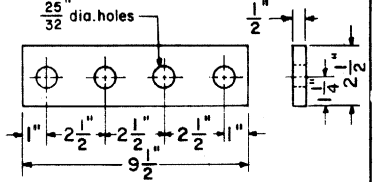


ADJUSTABLE ROCKER CLIP

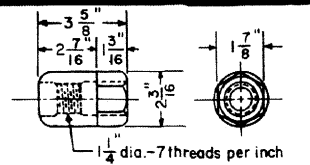
ELEVATION-SWITCH RODS



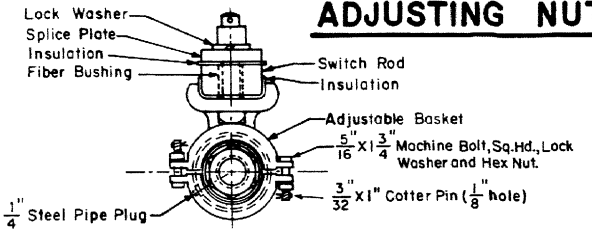
INSULATION PLATE FOR SPLICE PLATE



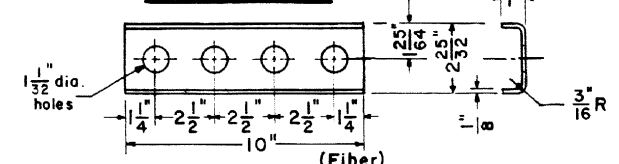
SPLICE PLATE



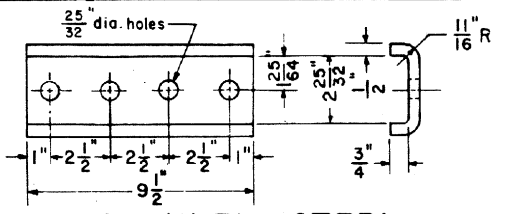
ADJUSTING NUT



END VIEW



INSULATION FOR CHANNEL



CHANNEL-STEEL

NOTES

- All switch rods shall conform to current A.R.E.A. Specifications.
- All fiber parts shall conform to current A.A.R. Signal Section Manual, Part 58, Specifications 13 - Hard Fiber.
- Each switch rod shall be marked with deeply cut characters, not less than 1/2 inch high, with rod designation and rail section.
- No. 6 switch rod is only required on switches for welded turnouts.



CONRAIL 73514-G

STANDARD VERTICAL SWITCH RODS AND ADJUSTABLE ROCKER CLIPS FOR 39'-0" SWITCH-132 LB. OR 140 LB. R.E. RAIL

OCTOBER 1976
 Chief Engineer - Maintenance of Way
 Chief Engineering Officer