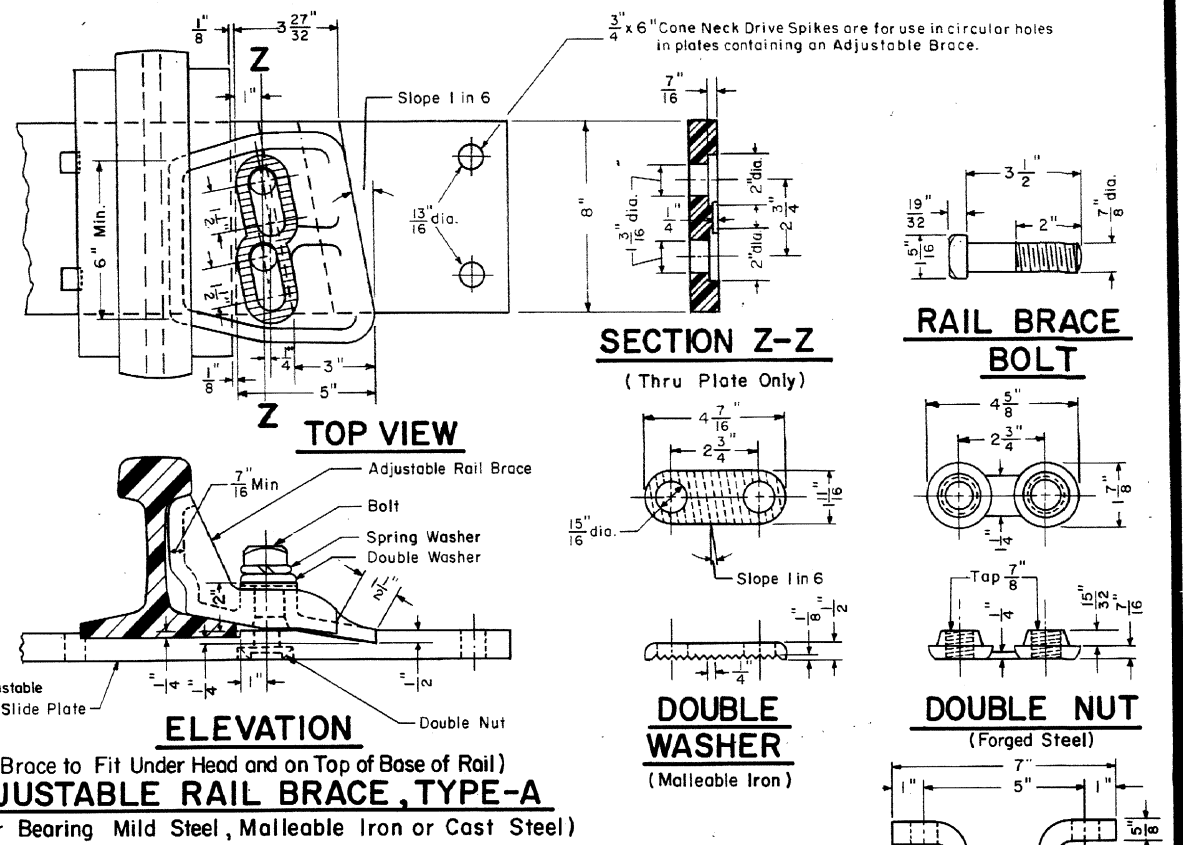
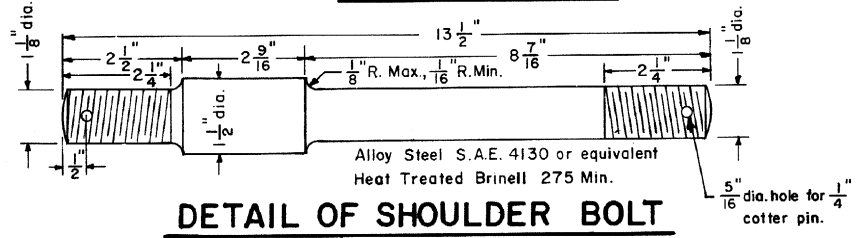
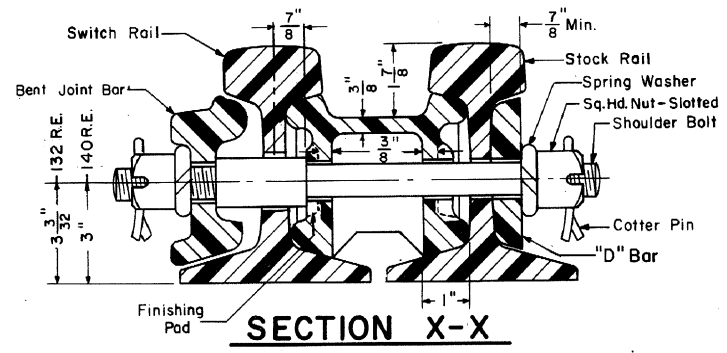
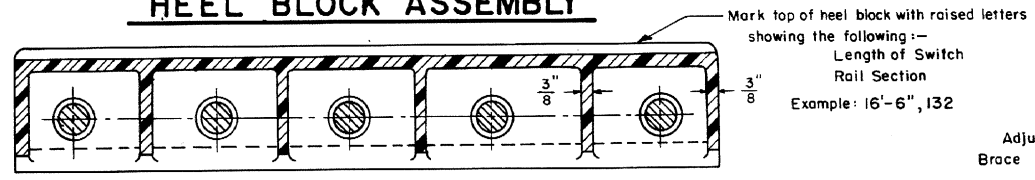
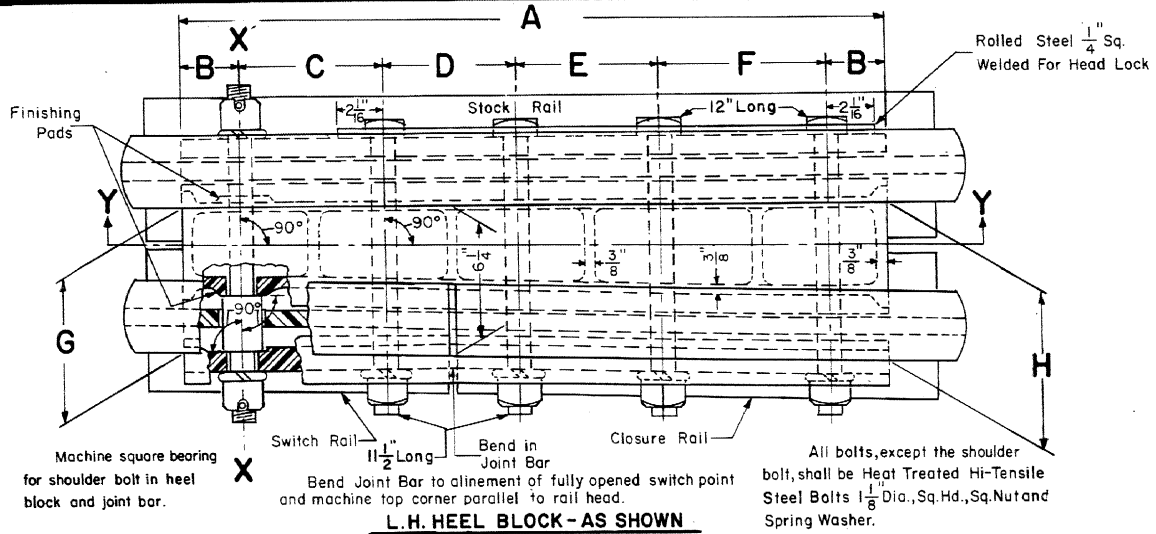
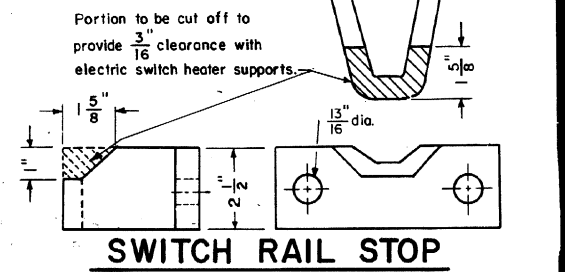



- Revisions**
 B - Jan.1978
 C - Aug.1978
 D - May,1980
 E - Dec.,1981
 F - Feb.,1984
 G - Jan.,1985
 H - Dec.,1987



HEEL BLOCK DIMENSIONS

SWITCH LENGTH and RAIL SECTION	HEEL BLOCK LENGTH	BOLT HOLE SPACINGS					TOE END SPREAD	HEEL END SPREAD
		A	B	C	D	E		
39'-140RE	29 1/2"	2 1/2"	6"	5 1/2"	6"	7"	6 1/32"	6 19/32"
39'-132RE	30"	2 7/16"	6"	7 1/8"	6"	6"	6 1/32"	6 19/32"
26'-140RE	29 1/2"	2 1/2"	6"	5 1/2"	6"	7"	5 15/16"	6 11/16"
26'-132RE	30"	2 7/16"	6"	7 1/8"	6"	6"	5 15/16"	6 11/16"
16'-6"140RE	29 1/2"	2 1/2"	6"	5 1/2"	6"	7"	5 29/32"	6 13/16"
16'-6"132RE	30"	2 7/16"	6"	7 1/8"	6"	6"	5 29/32"	6 13/16"
13'-132RE	30"	2 7/16"	6"	7 1/8"	6"	6"	5 3/4"	7"
11'-132RE	30"	2 7/16"	6"	7 1/8"	6"	6"	5 11/16"	7 1/16"



CONRAIL  **73515-H**
 STANDARD
HEEL BLOCK, ADJUSTABLE RAIL BRACE and SWITCH RAIL STOP
 13', 16'-6", 26' or 39' SWITCHES- 132 R.E. or 140 R.E. RAIL
 OCTOBER, 1976

R.H. Smith
 Chief Engineer - Maintenance of Way

L.P. Gordon
 Chief Engineering Officer