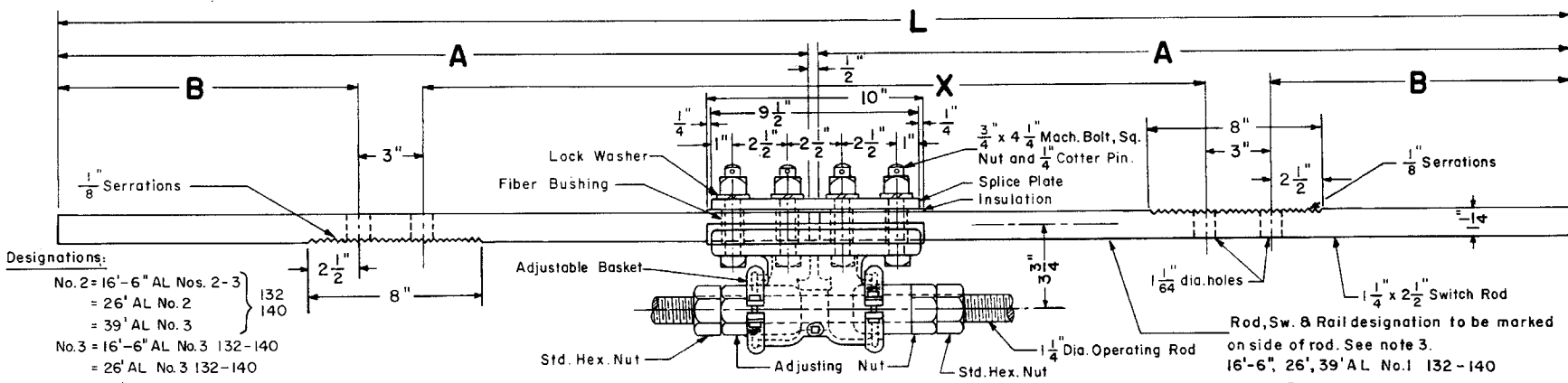
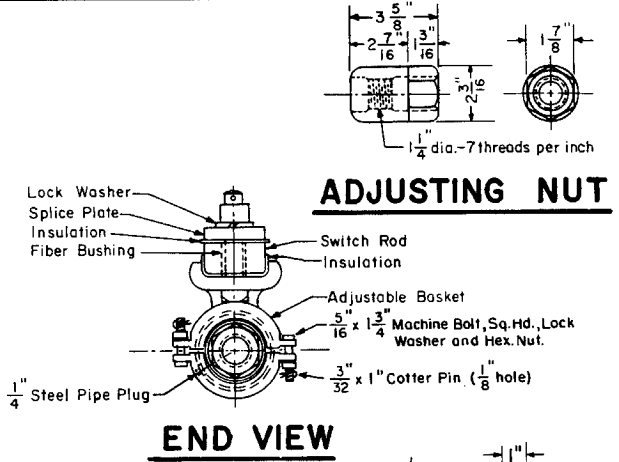


Revised  
 B - Jan. 1978  
 C - Mar. 1980  
 D - Oct. 1983



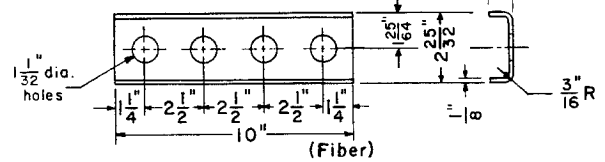
Designations:  
 No. 2 = 16'-6" AL Nos. 2-3  
 = 26' AL No. 2  
 = 39' AL No. 3  
 No. 3 = 16'-6" AL No. 3 132-140  
 = 26' AL No. 3 132-140  
 Nos. 4 & 5 = 26' AL Nos. 4-5 132-140  
 = 39' AL No. 6 132-140

**INSULATED SWITCH ROD NO. 1 WITH ADJUSTABLE BASKET**

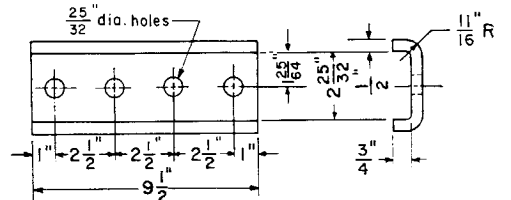


**ADJUSTING NUT**

**END VIEW**



**INSULATION FOR CHANNEL**

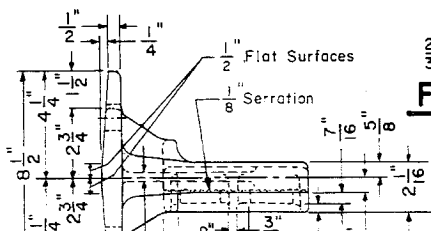


**CHANNEL-STEEL**

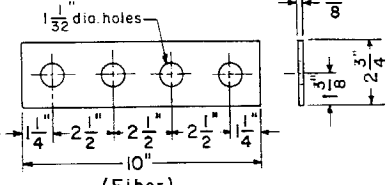
ROD DIMENSIONS				
ROD NO.	L	X	A	B
1	5'-10"	2'-11 7/8"	2'-10 3/4"	14 1/16"
2	4'-4"	3'-0 11/32"	2'-1 3/4"	4 53/64"
3	4'-4"	3'-1 1/8"	2'-1 3/4"	4 7/16"
4	5'-10"	3'-2 7/16"	2'-10 3/4"	12 25/32"
* 5	5'-10"	3'-2 7/16"	2'-10 3/4"	12 25/32"

**INSULATED SWITCH RODS NOS. 2, 3, 4 & 5\***

(\* See Note No. 4)



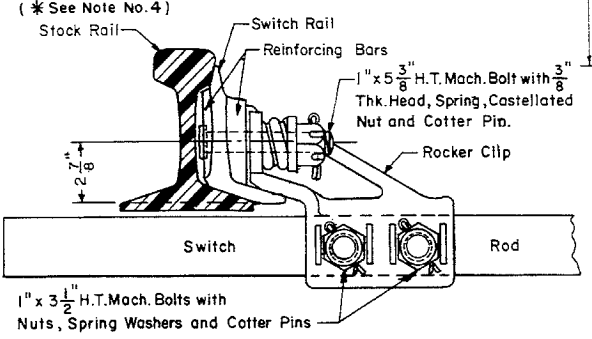
**FIBER BUSHING**



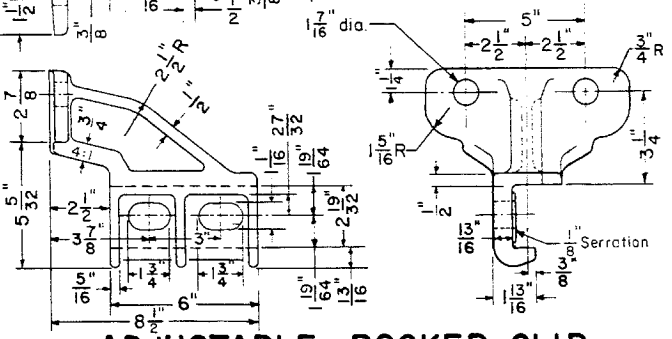
**INSULATION PLATE FOR SPLICE PLATE**

**NOTES**

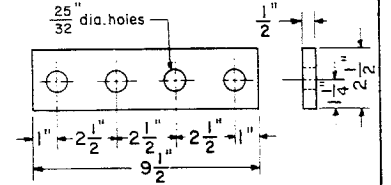
- 1- All switch rods shall conform to current A.R.E.A. Specifications.
- 2- All fiber parts shall conform to current A.A.R. Signal Section Manual, Part 58, Specifications 13 - Hard Fiber.
- 3- Each switch rod shall be marked with deeply cut characters, not less than 1/2 inch high, with rod designation and rail section.
- \* 4- No. 5 switch rod is only required on switches for welded turnouts.



**ASSEMBLED ROCKER CLIP**



**ADJUSTABLE ROCKER CLIP**



**SPLICE PLATE**

**CONRAIL 73516-D**

STANDARD

**VERTICAL SWITCH RODS AND ADJUSTABLE ROCKER CLIPS**

FOR 26'-0" SWITCH-132 LB. OR 140 LB. R.E. RAIL

NOVEMBER, 1976

*R.H. Smith* Chief Engineer - Maintenance of Way  
*P.H. Gordon* Chief Engineering Officer