

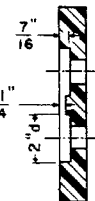
Revisions

- A- Jan. 1978
- B- Oct. 1980
- C- Dec. 1981

Mark Plate and Switch Designation and Rail Section on Both Ends.

OG - 26 or 39-132
 16 - 26 - 132
 26 - 26 - 132

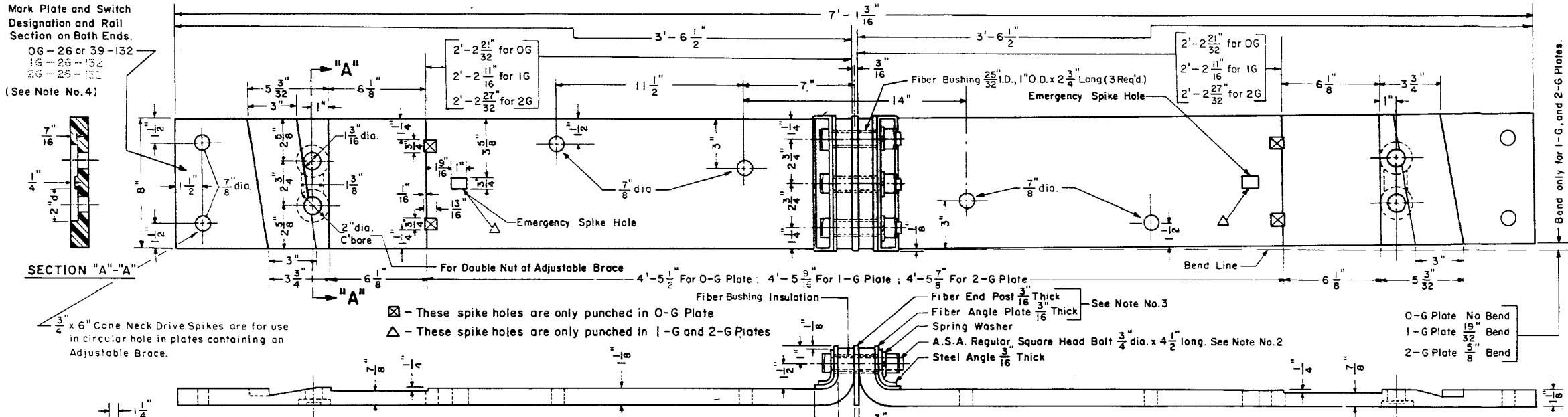
(See Note No. 4)



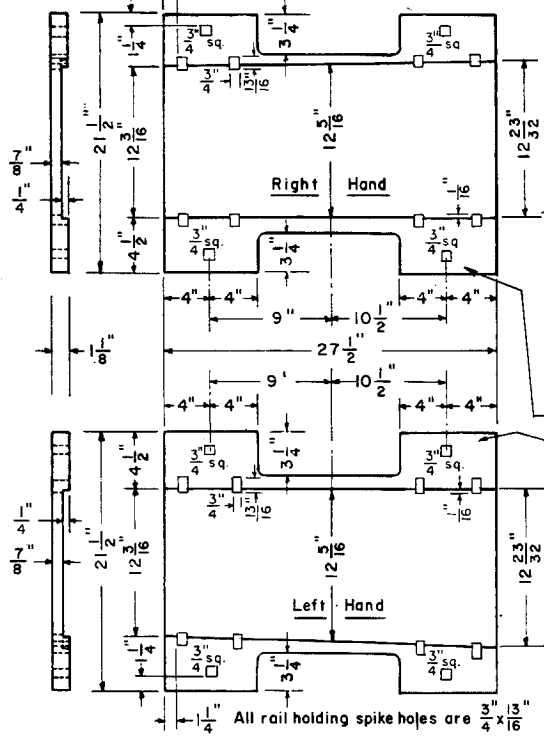
SECTION "A"-A

3/4" x 6" Cone Neck Drive Spikes are for use in circular hole in plates containing an Adjustable Brace.

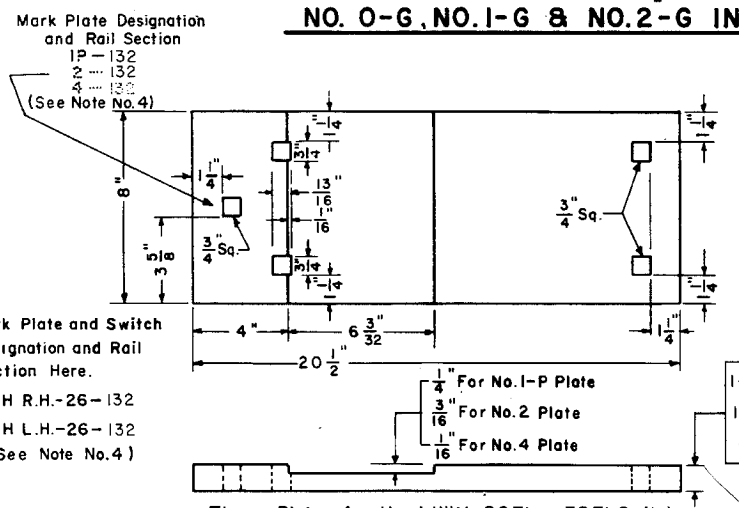
- ☒ - These spike holes are only punched in O-G Plate
- △ - These spike holes are only punched in 1-G and 2-G Plates



NO. 0-G, NO. 1-G & NO. 2-G INSULATED GAGE PLATES

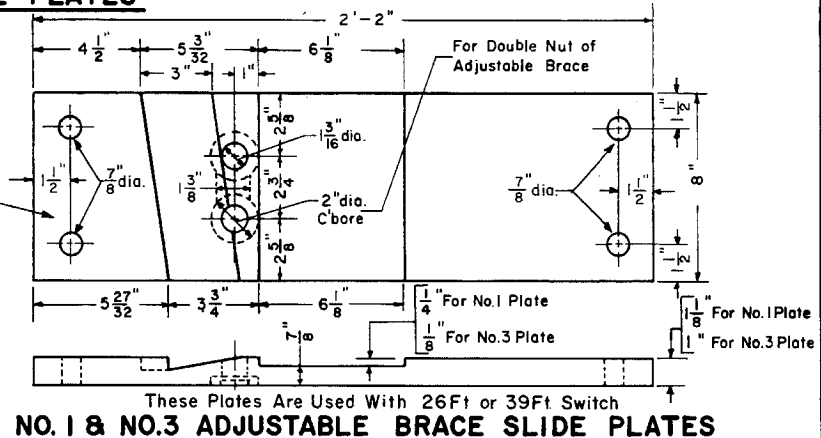


NO. SH(R.H. & L.H.) HEEL PLATES



NO. 1-P, NO. 2 & NO. 4 SHOULDER SLIDE PLATES

- NOTES:**
- 1 - Switch Plates shall conform to current A.R.E.A. Specifications for Low-Carbon Steel Tie Plates, with copper.
 - 2 - All gage plate bolts shall have A.S.A. Regular square heads and A.S.A. Heavy square nuts. All bolts shall be carbon-steel with medium-carbon steel nuts and conform to current A.R.E.A. Specifications for Heat-Treated Carbon-Steel Track Bolts and Carbon Steel Nuts.
 - 3 - All fiber parts shall conform to current A.R. Signal Section Manual, Part 58, Specification No. 13 for "Hard Fiber" and A.A.R. Signal Section Manual, Part No. 178 covering "Requisites for Fabricated Fiber Parts for Track Insulation."
 - 4 - Plates shall be marked with deeply cut characters, not less than 1/2" high, in the position as indicated on this plan.



NO. 1 & NO. 3 ADJUSTABLE BRACE SLIDE PLATES

CONRAIL 73517-D

STANDARD

SWITCH PLATES and GAGE PLATES FOR 26'-0" SWITCH-132LB RAIL

NOVEMBER 1976

R.H. Smith
 Chief Engineer - Maintenance of Way

A.R. Gordon
 Chief Engineering Officer