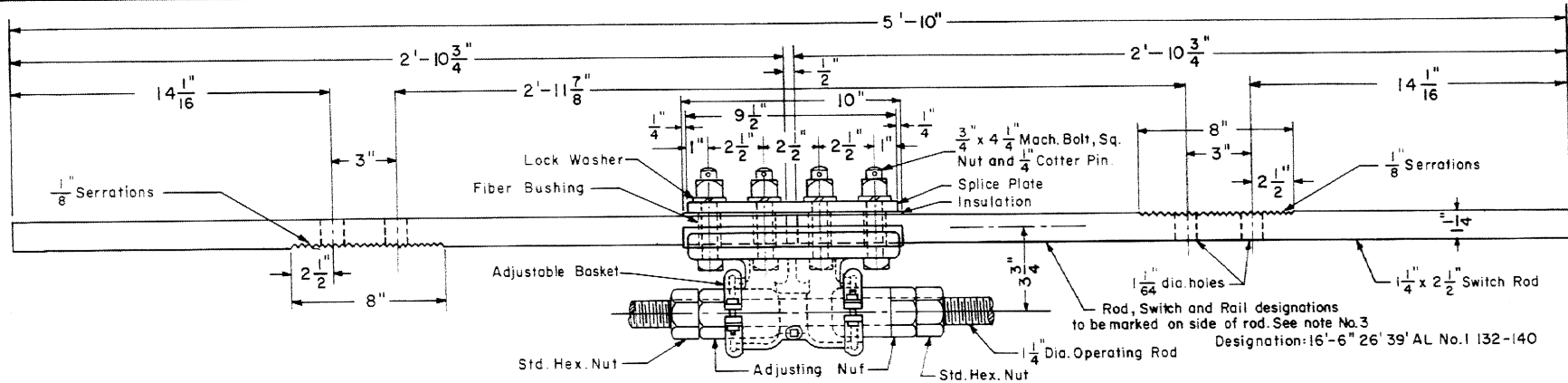
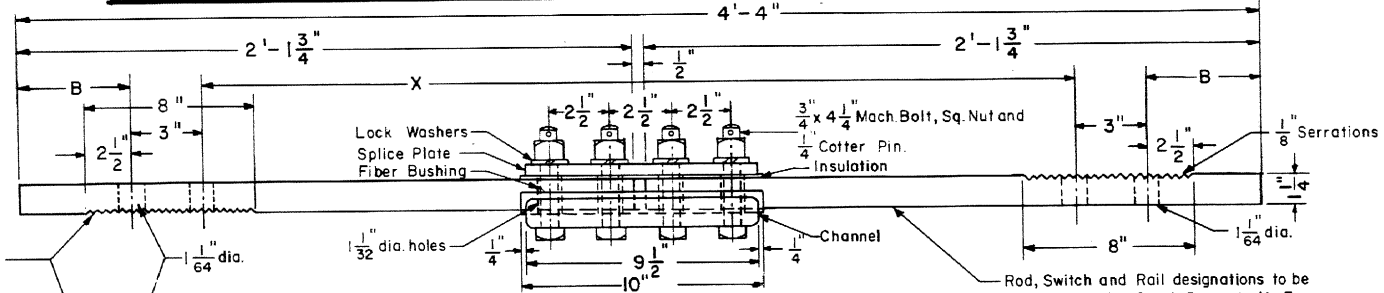


Revised  
 B-Jan. 1978  
 C-Jan. 1980  
 D-Oct. 1983  
 E-May, 1986



**INSULATED SWITCH ROD NO. 1 WITH ADJUSTABLE BASKET**

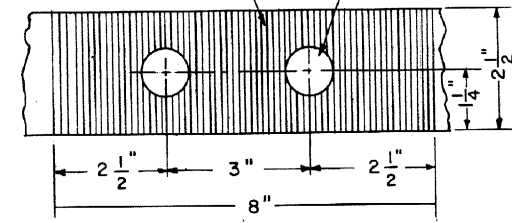
ROD NO.	X	B
2	3'-0 11/32"	4 53/64"
3	3'-1 1/8"	4 7/16"



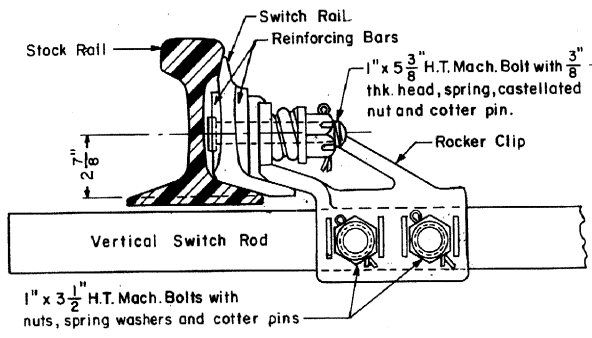
**INSULATED SWITCH RODS-NOS. 2 & 3\***

(SEE NOTE NO. 4)

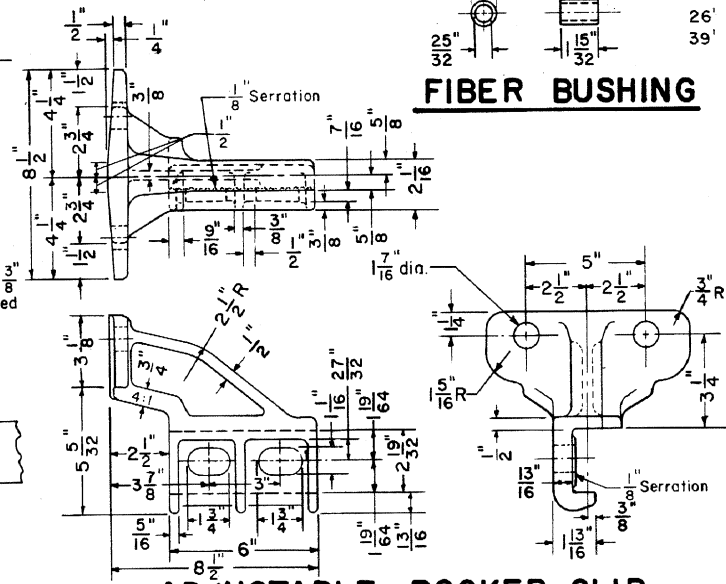
Rod, Switch and Rail designations to be marked on side of rod. See note No. 3  
 Designation:  
 No. 2 16'-6" AL No. 2 26' AL No. 2 39' AL No. 3  
 No. 3 16'-6" AL No. 3 26' AL No. 3 32-140



**ELEVATION-SWITCH RODS**

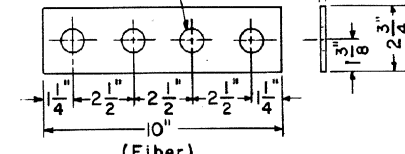
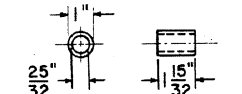


**ASSEMBLED ROCKER CLIP**

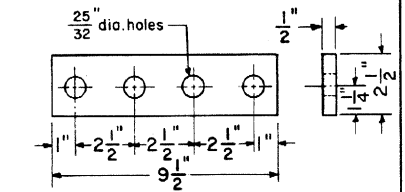


**ADJUSTABLE ROCKER CLIP**

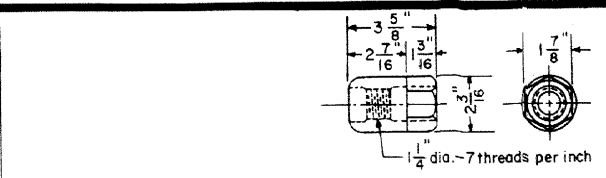
**FIBER BUSHING**



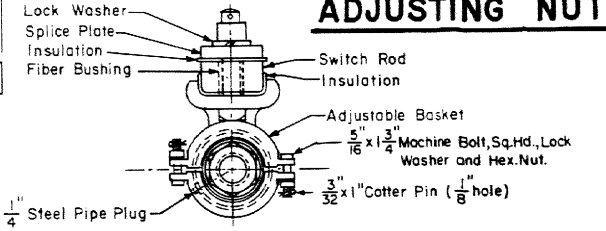
**INSULATION PLATE FOR SPLICE PLATE**



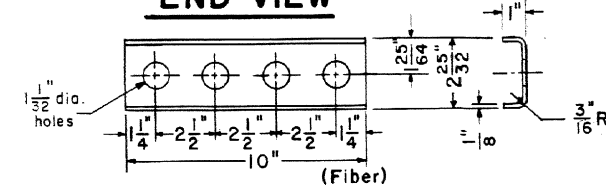
**SPLICE PLATE**



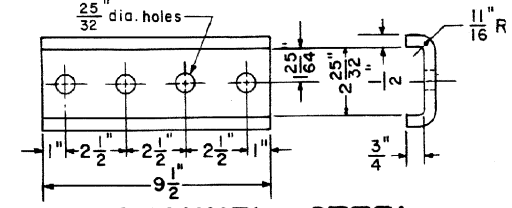
**ADJUSTING NUT**



**END VIEW**



**INSULATION FOR CHANNEL**



**CHANNEL-STEEL**

**NOTES**

- All switch rods shall conform to current A.R.E.A. Specifications.
- All fiber parts shall conform to current A.A.R. Signal Section Manual, Part 58, Specifications 13 - Hard Fiber.
- Each switch rod shall be marked with deeply cut characters, not less than 1/2" high, with rod, switch and rail designations.
- No. 3 switch rod is only required on switches for welded turnouts.

**CONRAIL** **73518-E**

STANDARD  
**VERTICAL SWITCH RODS**  
**AND ADJUSTABLE ROCKER CLIPS**  
 FOR 16'-6" SWITCH-UNDERCUT 132 R E or 140 R E RAIL  
 NOVEMBER, 1976

*RH Smith*  
 Chief Engineer - Maintenance of Way

*AG Gordon*  
 Chief Engineering Officer