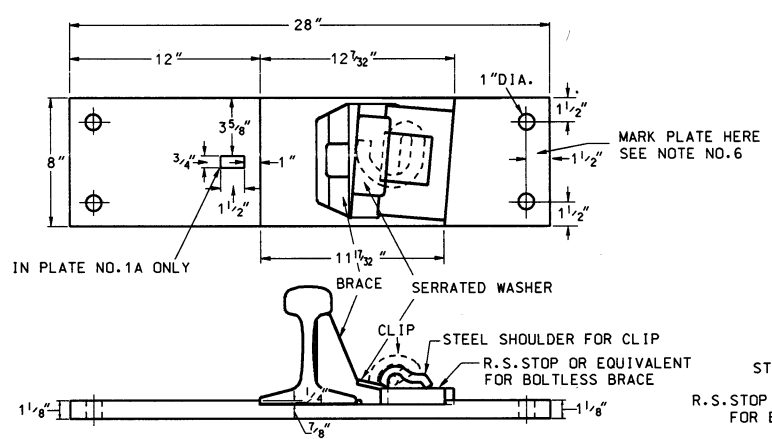
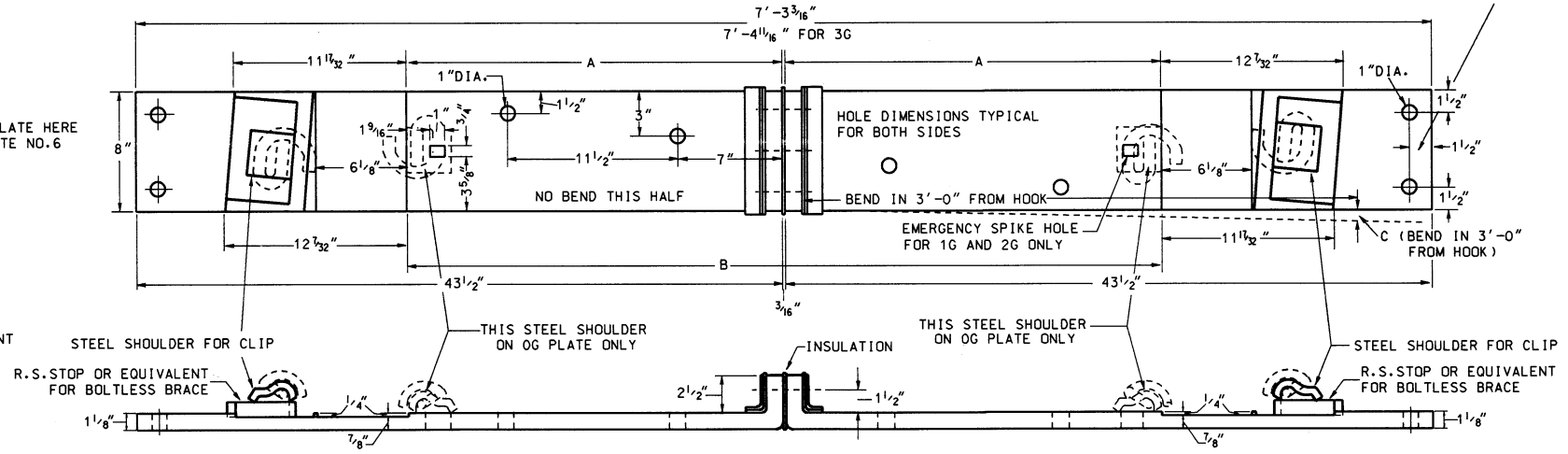


REVISIONS  
 A-NOV., 1991  
 B-JUN., 1992  
 C-DEC., 1994  
 D-JAN., 1997

MARK PLATE HERE  
 SEE NOTE NO. 6



NOS. 1A & 1 BRACE PLATES



	27'-0"			38'-0"			59'-6"		
	A	B	C	A	B	C	A	B	C
OG	2'-2 2/32"	4'-5 1/2"	1 1/8"	2'-2 5/8"	4'-5 1/16"	0"	2'-2 2/32"	4'-5 1/2"	0"
1G	2'-2 2/32"	4'-5 1/2"	1 5/32"	2'-2 2/32"	4'-5 1/2"	1 5/32"	2'-2 2/32"	4'-5 1/2"	9 3/32"
2G	2'-2 1 3/16"	4'-5 1 3/16"	1 5/32"	2'-2 3/4"	4'-5 1 1/16"	9 3/32"	2'-2 3/4"	4'-5 1 1/16"	9 3/32"
3G	2'-3 1/32"	4'-7"	1 3/32"				2'-3 1/32"	4'-7"	1 3/32"

OG, 1G, 2G, 3G INSULATED GAGE PLATES

NOTES

- 1-PLATES SHALL CONFORM TO CURRENT AREA SPECIFICATIONS FOR LOW-CARBON STEEL TIE PLATES WITH COPPER.
- 2-ALL GAGE PLATE BOLTS SHALL HAVE A.S.A. REGULAR SQUARE HEADS AND A.S.A. HEAVY SQUARE NUTS. ALL BOLTS SHALL BE CARBON STEEL WITH MEDIUM CARBON STEEL NUTS AND CONFORM TO CURRENT AREA SPECIFICATIONS FOR HEAT TREATED CARBON STEEL TRACK BOLTS AND CARBON STEEL NUTS.
- 3-ALL GAGE PLATE BOLTS AND INSULATION (TYPE AND LOCATION) TO BE AS SHOWN ON CR PLAN 73519-().
- 4-ALL FIBER PARTS SHALL CONFORM TO CURRENT A.A.R. SIGNAL SECTION MANUAL, PART 58, SPEC. NO. 13 FOR "HARD FIBER" AND A.A.R. SIGNAL SECTION MANUAL, PART 178.
- 5-WELDS MUST NOT PROJECT BEYOND VERTICAL FACE OF RAIL SEAT.
- 6-EACH PLATE SHALL BE MARKED BY DEEPLY CUT CHARACTERS, NOT LESS THAN 1/2" HIGH, IN THE POSITION INDICATED ON THIS PLAN, WITH PLATE, SWITCH AND RAIL DESIGNATION.

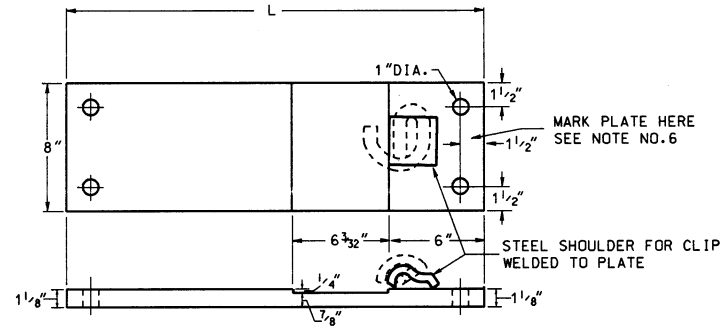
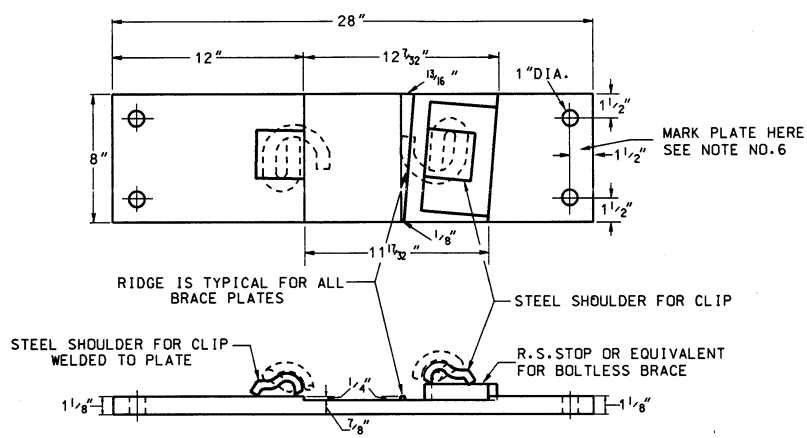


PLATE	L
1P	22"
HP	24"

NOS. 1P & HP SLIDE PLATES



NO. 0 BRACE PLATE

**CONRAIL** 73522-D

STANDARD

**SWITCH & GAGE PLATES**  
 NOS. 8, 10, 15 AND 20 TURNOUTS 136-RE  
 (PANDROL FASTENERS)

REDRAWN JANUARY, 1997

A.C.E. STANDARDS & TRACK ANALYSIS

CHIEF ENGINEER