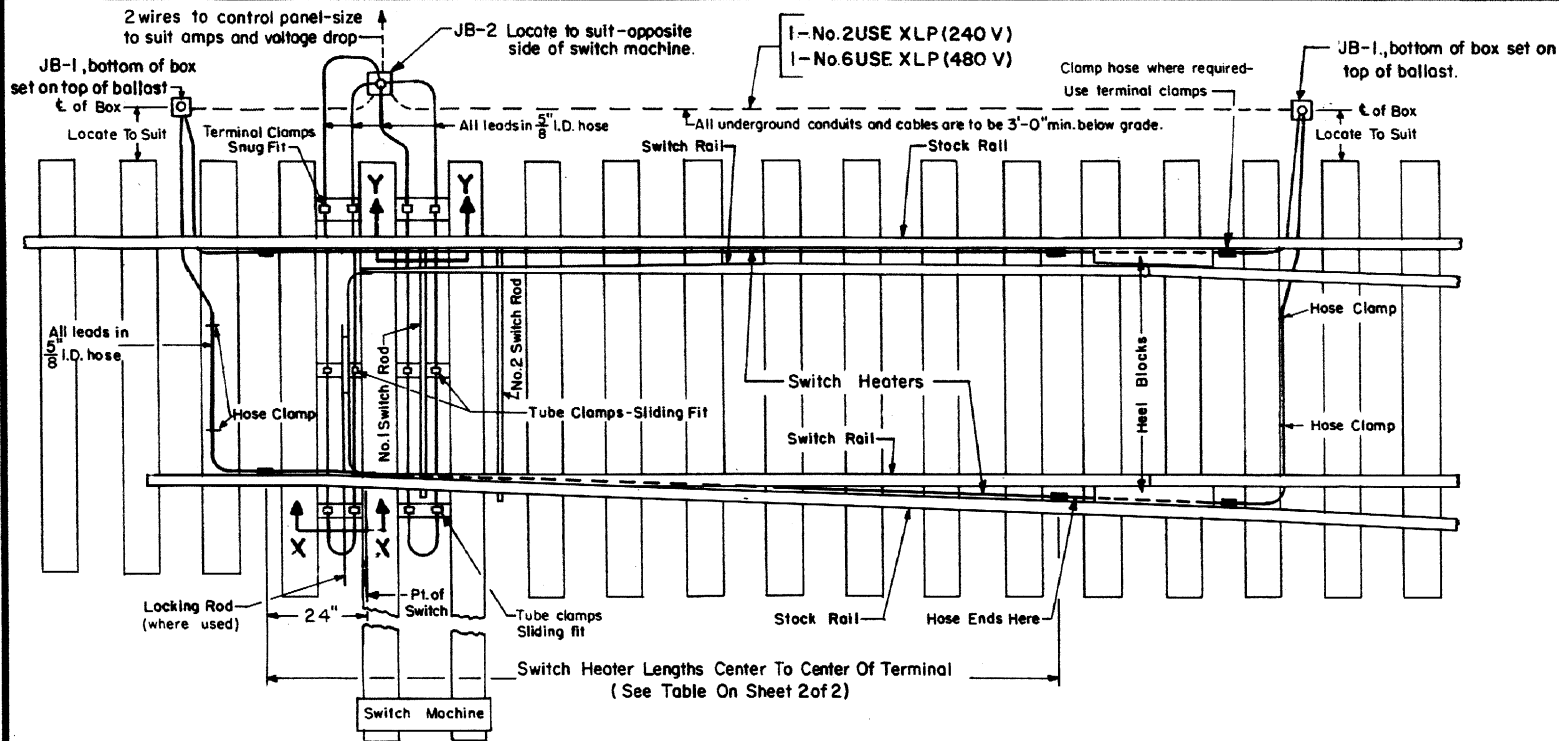
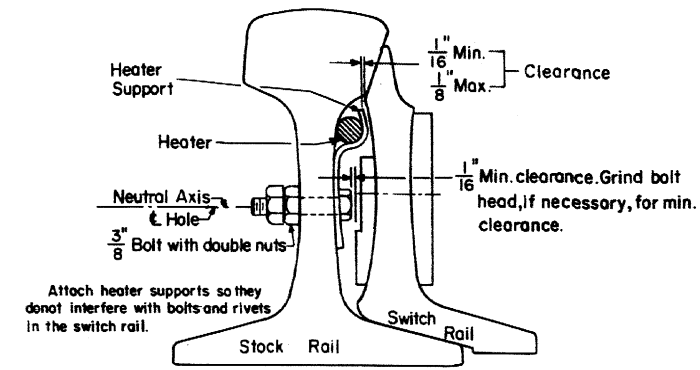


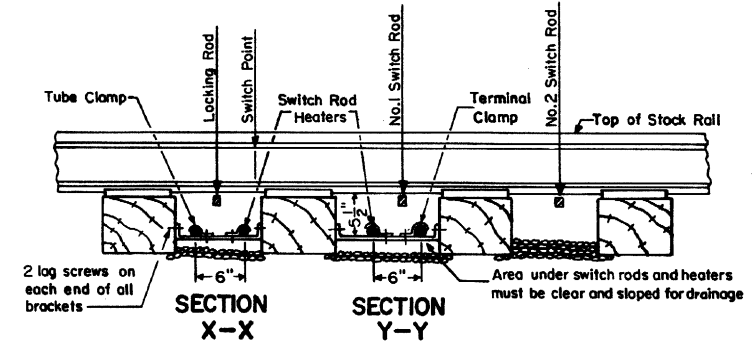
Revisions  
 B-Sept.,1987  
 C-March,1990



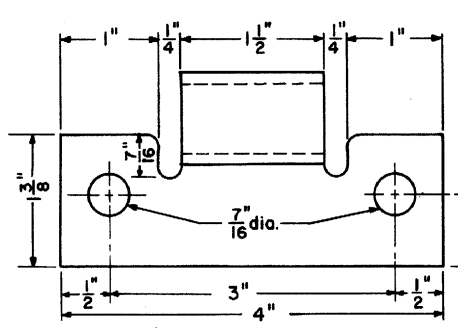
**TYPICAL ARRANGEMENT OF SWITCH AND ROD HEATERS**



**ASSEMBLY OF HEATER SUPPORT**

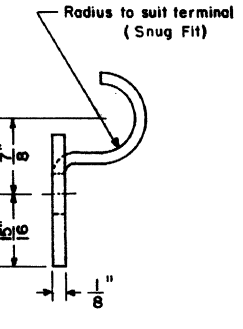


**SECTION X-X**  
**SECTION Y-Y**  
**SIDE VIEW**  
**SWITCH ROD HEATERS**



**TERMINAL SUPPORT**

Supply 2 Bolts With Each For Tubular Switch Heater



**HEATER SUPPORT**

Supply 1 Bolt With Each For Tubular Switch Heater

**NOTES**

- 1 - JB-1 cast junction box,  $5\frac{1}{2} \times 4\frac{1}{8} \times 2\frac{13}{16}$  D, with 2 couplings for  $\frac{5}{8}$  I.D. hose and bolt on gasket cover. All on 20\"/>
- 2 - JB-2 similar to JB-1 except with Raco Type Box 584 and 4 couplings for  $\frac{5}{8}$  I.D. hose.
- 3 - Hose, cold water type,  $\frac{5}{8}$  I.D. one braided. Account and Reference No. 46-429209.
- 4 - Hose clamp - 2 hole steel clamp, Weaver No. 34HW 2 or approved equal.
- 5 - Touch up field damaged galvanizing with a cold galvanizing compound, ZRC or Crown Co.
- 6 - See sheet 2 of this plan for "Table of Tubular Switch Heater."

**73700-C**  
Sheet 1 of 2

STANDARD

**ELECTRIC SWITCH HEATERS**

FOR NOS. 4, 6, 8, 10, 15, 16, 18 and 20 TURNOUTS

JUNE, 1979

*H. Alexander*  
Chief Engineer - Communications & Signals

*R.H. Smith*  
Chief Engineer - Maintenance of Way

*B.G. Gordon*  
Chief Engineering Officer