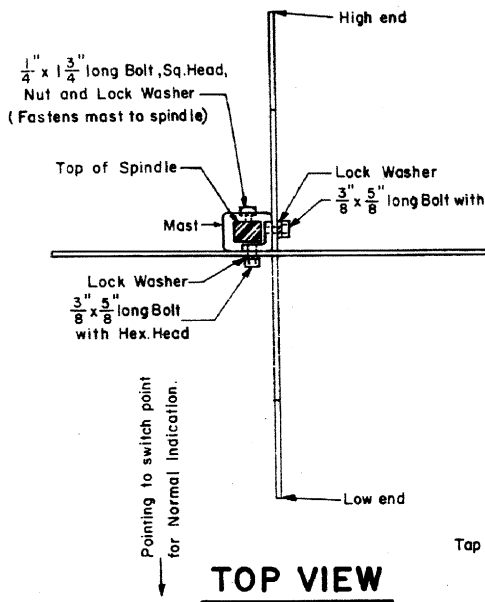
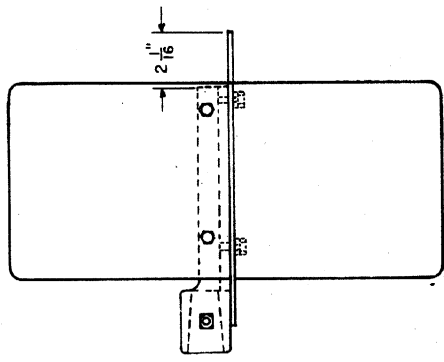


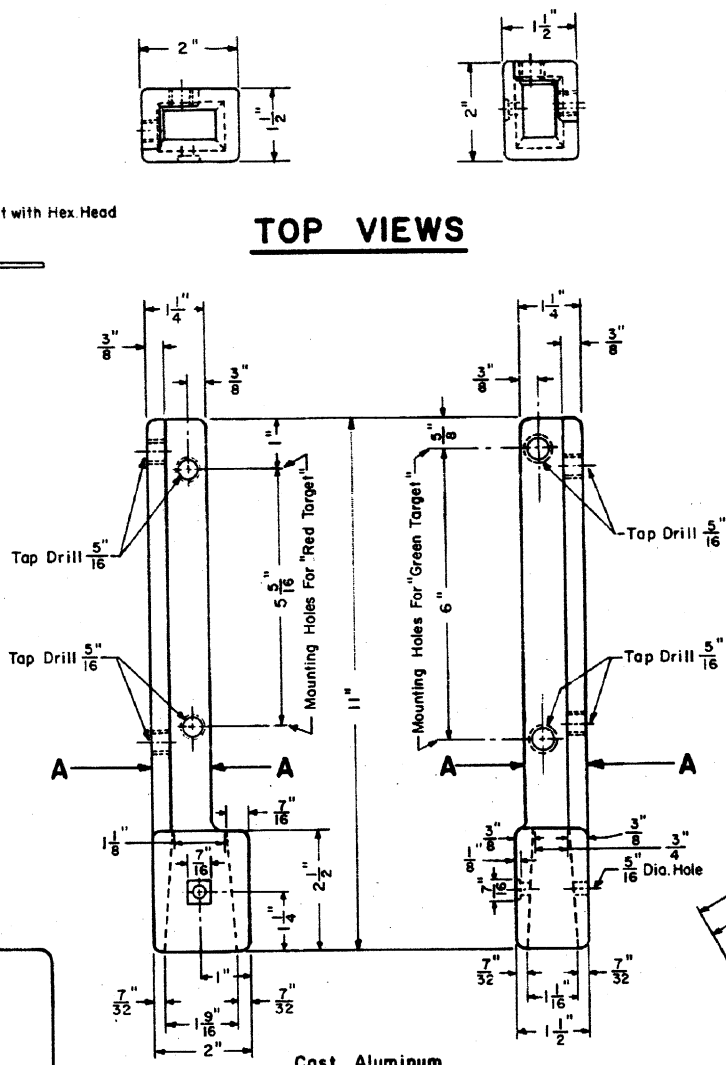
Revisions
 "A"- Oct., 1980



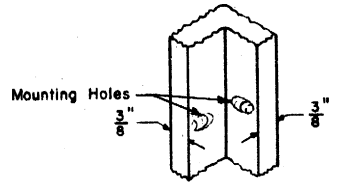
TOP VIEW



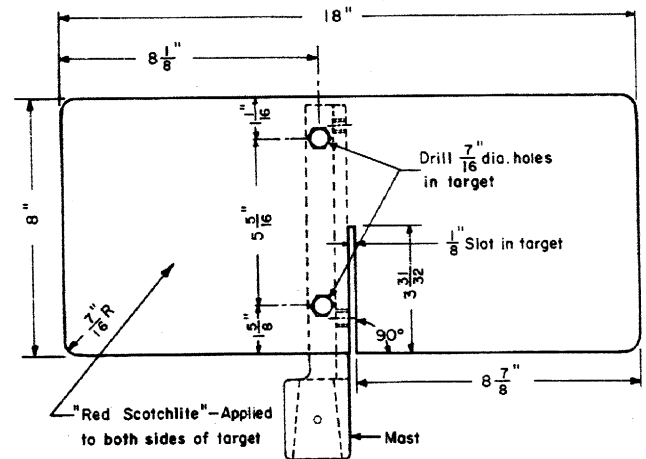
SIDE VIEW



MAST

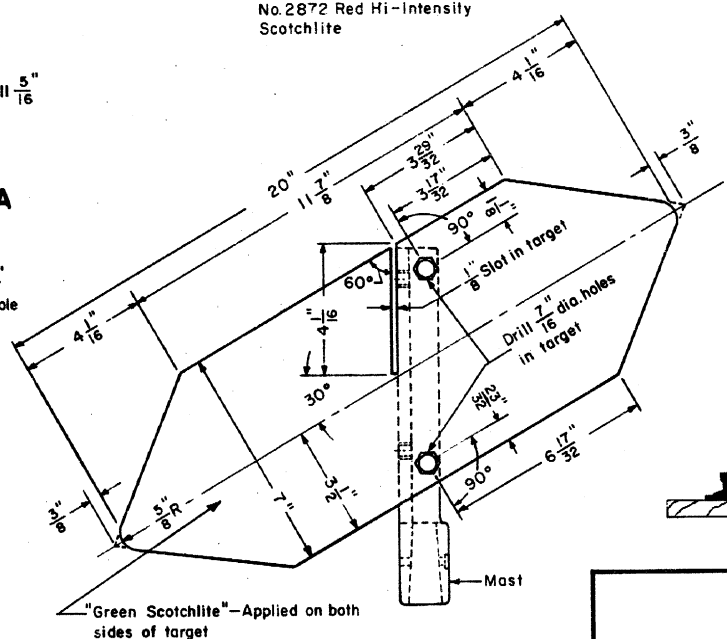


**A-A
 VIEW AT MOUNTING HOLES**



**DETAILS FOR RED TARGET
 INDICATION-REVERSE**

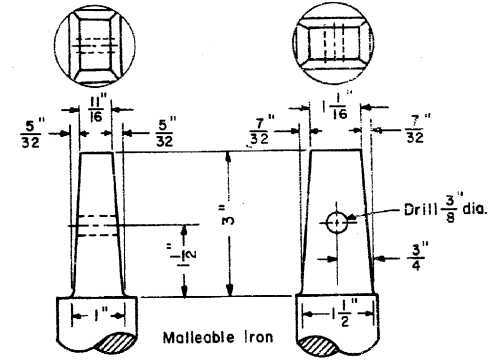
No. 2872 Red Hi-Intensity Scotchlite



**DETAILS FOR GREEN TARGET
 INDICATION-NORMAL**

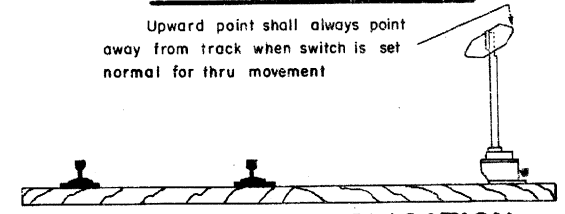
No. 2877 Green Hi-Intensity Scotchlite

- NOTES**
- 1-ReflectORIZED (scotchlite) Switch Target shall be used in accordance with CONRAIL "Specifications for Construction and Maintenance of Track, M.W.-4" and where not prohibited by Public Authorities having jurisdiction.
 - 2-All corners and edges, of mast and targets, shall have a smooth finish.
 - 3-The aluminum surface of the targets shall be thoroughly cleaned with Oakite 33 before the application of scotchlite by the use of heat (to activate the adhesive) and vacuum pressure (to mold the material to the aluminum surfaces).
 - 4-Care should be exercised when sliding targets into slots and fastening them to the mast to reduce the possibility of damaging the scotchlite material.
 - 5-Targets shall be of 0.081" 6061-T6 aluminum sheet.



TOP OF SPINDLE

Upward point shall always point away from track when switch is set normal for thru movement



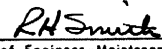
GENERAL APPLICATION

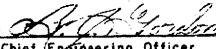
73917-B

CONRAIL

STANDARD
SWITCH TARGET

REFLECTORIZED WITH SCOTCHLITE FOR
 USE WITH INTERMEDIATE OR HIGH MAST
 NOVEMBER, 1976


 Chief Engineer-Maintenance of Way


 Chief Engineering Officer

Former N.Y.C. Plan J-34
 Supersedes Former P.R.R. Plans 73915-A & 73916-B