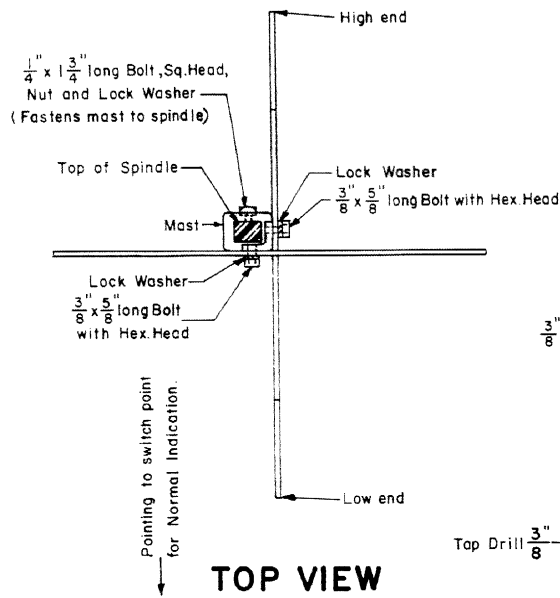
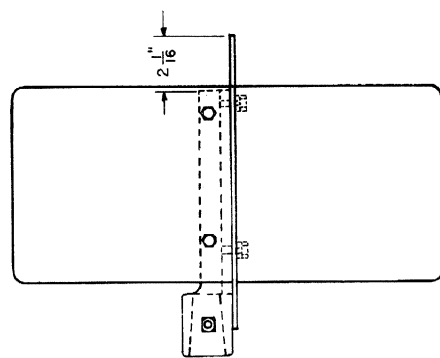


Revisions

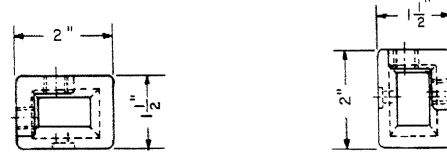
- B - Oct., 1980
- C - Sept., 1994



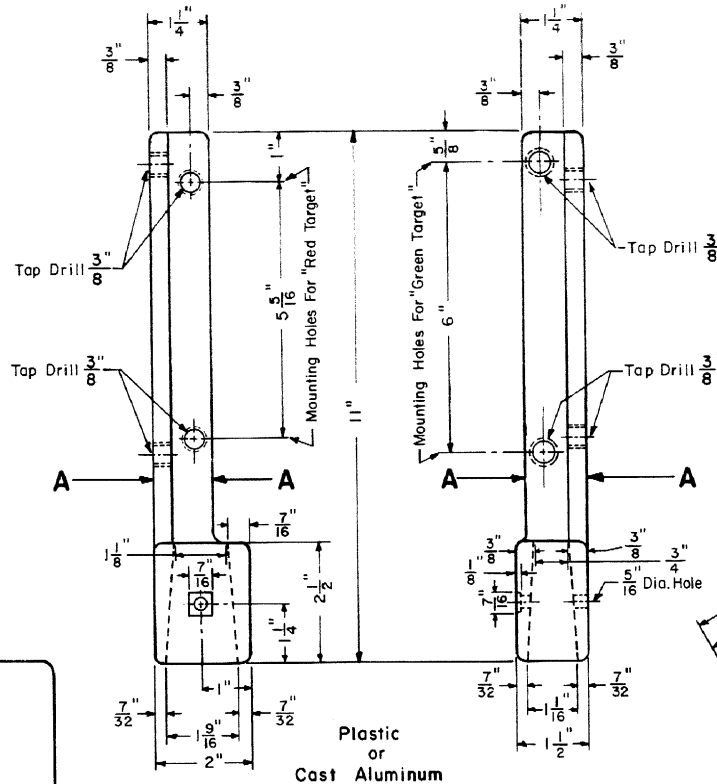
**TOP VIEW**



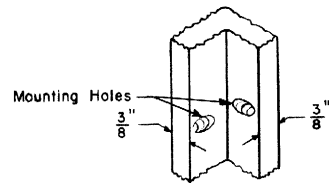
**SIDE VIEW**



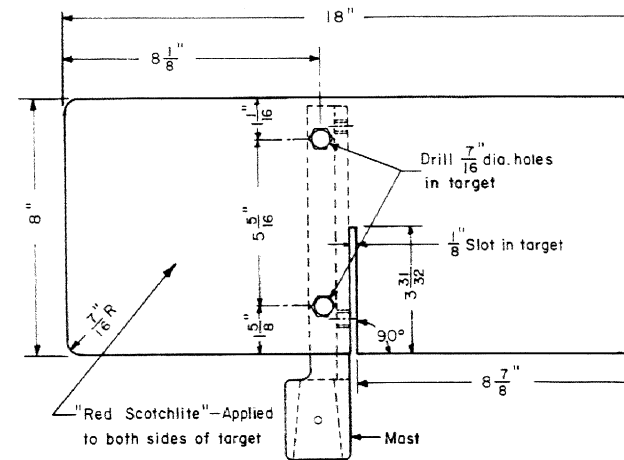
**TOP VIEWS**



**MAST**

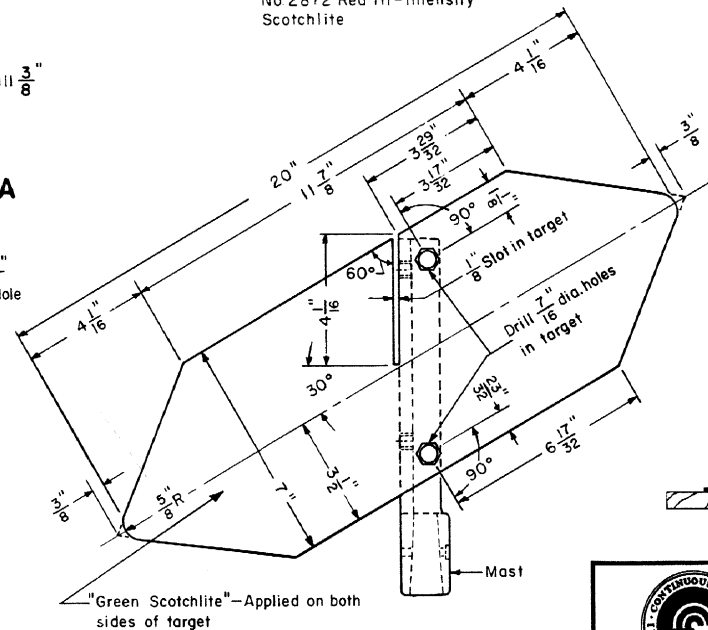


**A-A  
VIEW AT MOUNTING HOLES**



**DETAILS FOR RED TARGET INDICATION-REVERSE**

No. 2872 Red Hi-Intensity Scotchlite

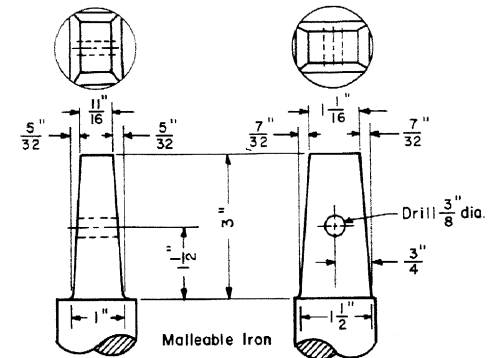


**DETAILS FOR GREEN TARGET INDICATION-NORMAL**

No. 2877 Green Hi-Intensity Scotchlite

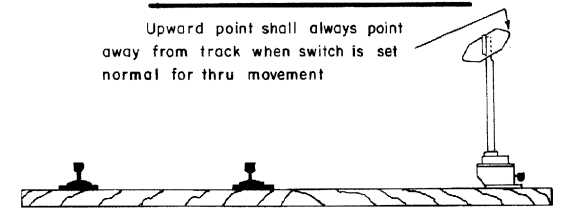
**NOTES**

- 1-Reflectorized (scotchlite) Switch Target shall be used in accordance with CONRAIL "Specifications for Construction and Maintenance of Track, M.W.-4" and where not prohibited by Public Authorities having jurisdiction.
- 2-All corners and edges, of mast and targets, shall have a smooth finish.
- 3-The aluminum surface of the targets shall be thoroughly cleaned with Oakite 33 before the application of scotchlite by the use of heat (to activate the adhesive) and vacuum pressure (to mold the material to the aluminum surfaces).
- 4-Care should be exercised when sliding targets into slots and fastening them to the mast to reduce the possibility of damaging the scotchlite material.
- 5-Targets shall be of 0.081" 6061-T6 aluminum sheet.



**TOP OF SPINDLE**

Upward point shall always point away from track when switch is set normal for thru movement



**GENERAL APPLICATION**

Former N.Y.C. Plan J-34  
Supersedes Former P.R.R. Plans 73915-A & 73916-B



CONRAIL **73917-C**

STANDARD  
**SWITCH TARGET**

REFLECTORIZED WITH SCOTCHLITE FOR USE WITH INTERMEDIATE OR HIGH MAST  
NOVEMBER, 1976

*R.H. Smith*  
Chief Engineer - Maintenance of Way

*S.T. Gordon*  
Chief Engineering Officer