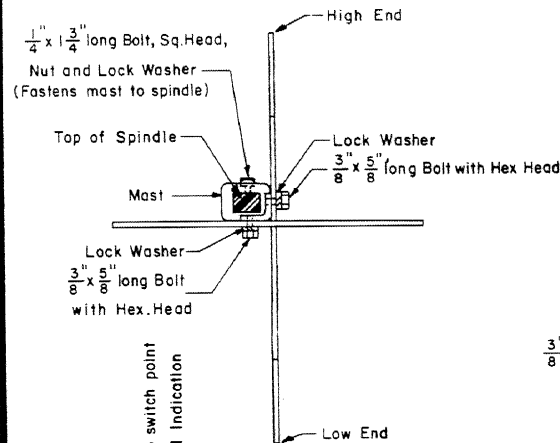
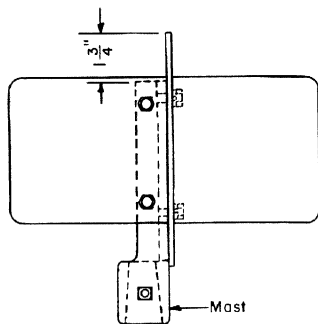


Revisions
 B - Oct. 1980
 C - Sept., 1994

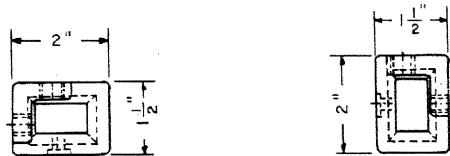


Pointing to switch point
 for Normal Indication

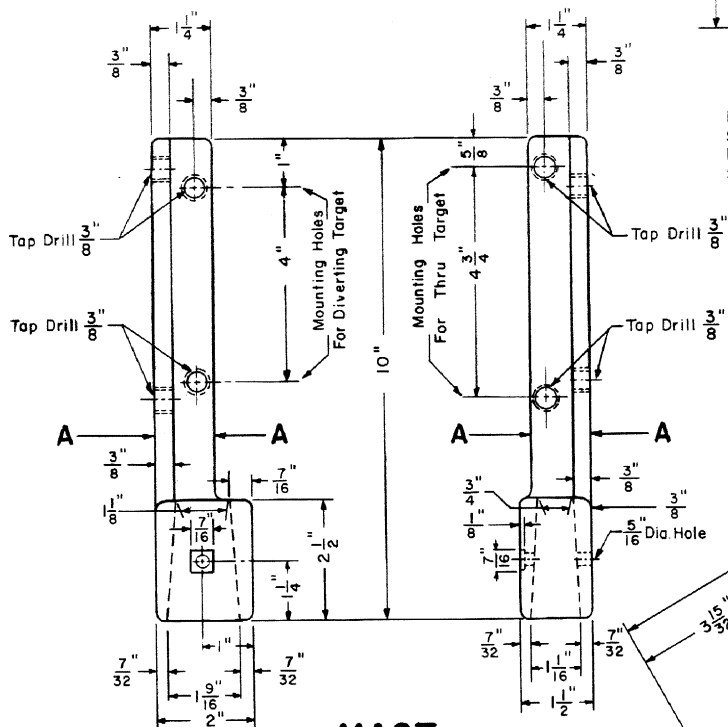
TOP VIEW



SIDE VIEW

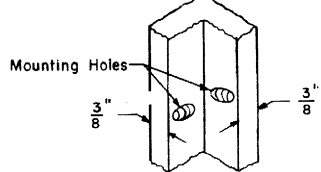


TOP VIEWS



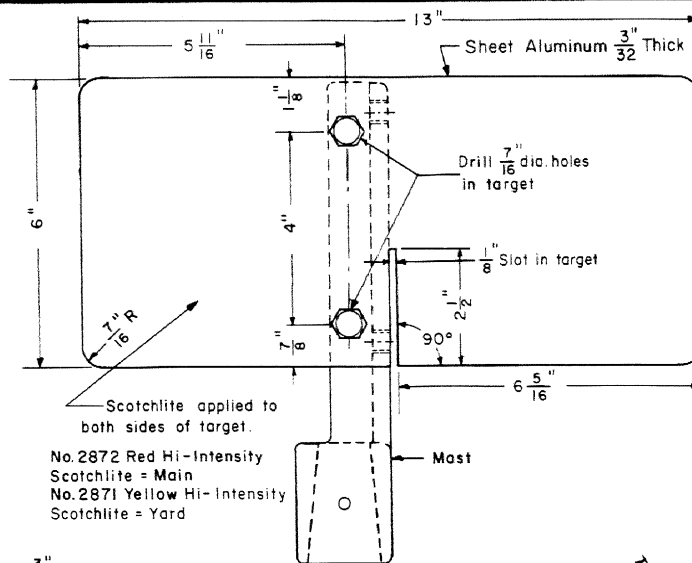
MAST

Cast Aluminum
 or
 Plastic



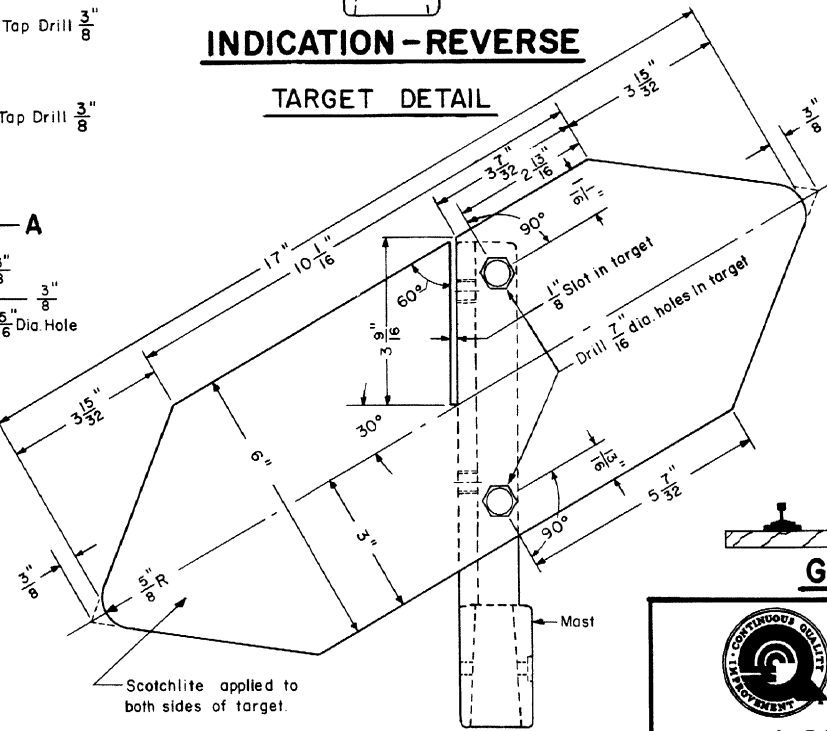
A-A

VIEW AT MOUNTING HOLES



INDICATION-REVERSE

TARGET DETAIL



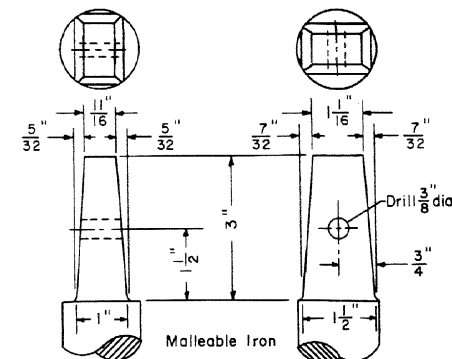
INDICATION-NORMAL

TARGET DETAIL

No. 2877 Green Hi-Intensity
 Scotchlite both Main & Yard

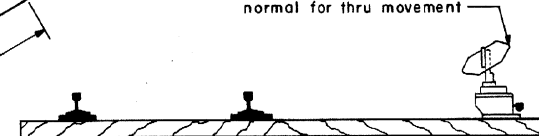
NOTES

- 1-ReflectORIZED (scotchlite) Switch Target shall be used in accordance with CONRAIL "Specifications for Construction and Maintenance of Track, M.W.-4" and where not prohibited by Public Authorities having jurisdiction.
- 2-All corners and edges of mast and targets shall have a smooth finish.
- 3-The aluminum surface of the targets shall be thoroughly cleaned with Oakite 33 before the application of scotchlite by the use of heat (to activate the adhesive) and vacuum pressure (to mold the material to the aluminum surfaces).
- 4-Care should be exercised when sliding targets into slots and fastening them to the mast to reduce the possibility of damaging the scotchlite material.
- 5-Targets shall be of 0.081" 6061-T6 aluminum sheet.



TOP OF SPINDLE

Upward point shall always point
 away from track when switch is set
 normal for thru movement



GENERAL APPLICATION



CONRAIL

73919-C

STANDARD
LOW SWITCH TARGET

REFLECTORIZED WITH SCOTCHLITE

FOR LOW STAND - MAIN OR YARD TRACK USE

NOVEMBER, 1976

R.H. Smith
 Chief Engineer - Maintenance of Way

Robert Gardner
 Chief Engineering Officer

Former N.Y.C. Plan J-34
 Supersedes Former P.R.R. Plans 73915-A & 73916-B