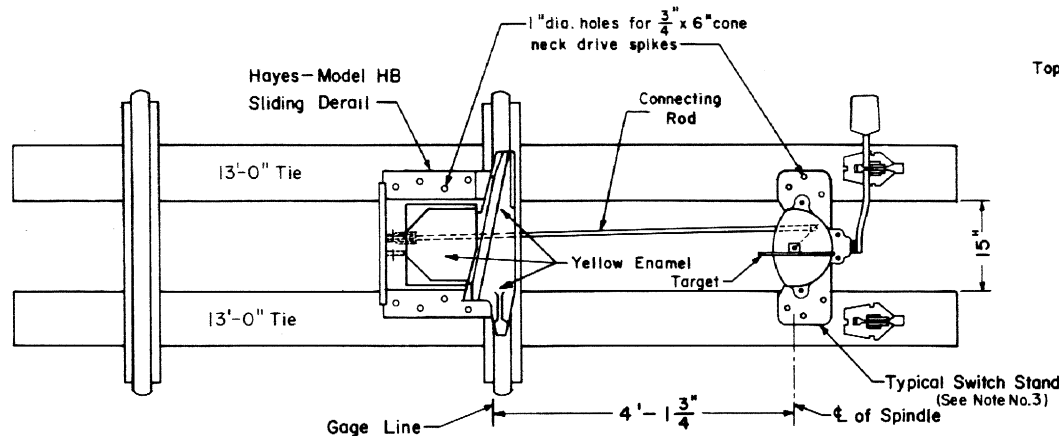
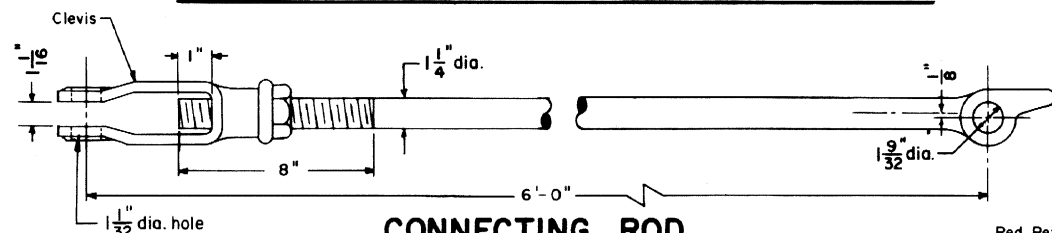


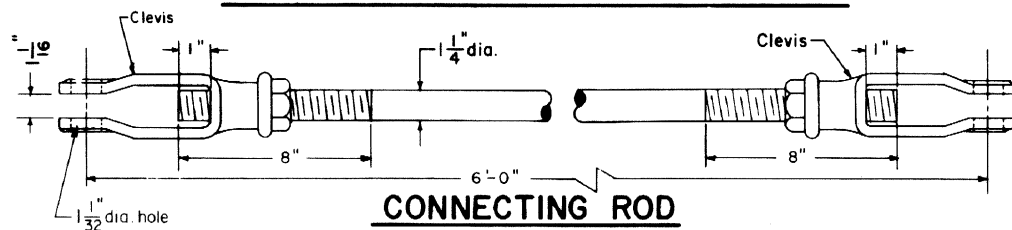
LOCATION OF DERAIL



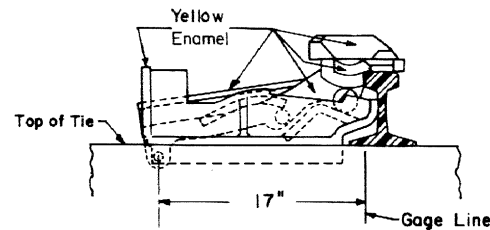
SWITCH STAND AND DERAIL INSTALLATION



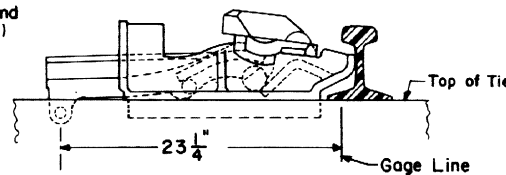
CONNECTING ROD FOR NEW CENTURY SWITCH STAND



CONNECTING ROD FOR OTHER TYPES OF SWITCH STANDS

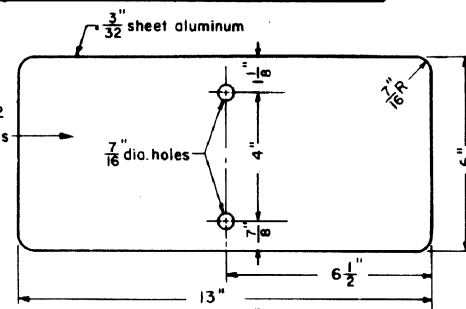


DERAIL IN "NORMAL POSITION"



DERAIL IN "REVERSE POSITION"

Red Reflectorized Scotchlite No.2272 applied on both sides



Target to be mounted on 10" mast. For details see C.R. Plan 73919-(1).

TARGET DETAILS

NOTES

1 - Derail shall be placed a sufficient distance back of the clearance point to make sure that derailed rolling equipment will not foul the main or other track.

2 - The following switch stands are to be used to operate derail:-
New Century, Economy, Odenkirk or Ramapo No.26-E

3 - Switch stand to be in tension, with red target perpendicular to the rail, when the derail is in the normal position.

4 - When ordering derail specify - Model, Size and Hand
Size 6 - for 90lb. rail to 110 lb. rail
Size 7 - for 110lb. rail to 140lb. rail
Size 8 - for 140lb. rail to 155 lb. rail

The hand is determined by looking in direction of movement of the car to be derailed, a right hand derail goes on the right hand rail and derails towards the right. Conversely with the left hand.

5 - All orders should state that derails will be operated by switch stands having a 5" throw.

6 - The aluminum surfaces of the derail target shall be thoroughly cleaned with *Smutco No.1* before application of scotchlite by the use of heat (to activate the adhesive) and vacuum pressure (to mold the material to the aluminum surfaces).

7 - When fastening target to the mast, care should be exercised to reduce the possibility of damaging the scotchlite material.

8 - Derail is to be painted with yellow enamel over primer.



73920-A

STANDARD METHOD FOR INSTALLING HAYES SLIDING DERAIL MODEL - HB

NOVEMBER 1976

R.H. Smith
Chief Engineer - Maintenance of Way

W.B. Gordon
Chief Engineering Officer