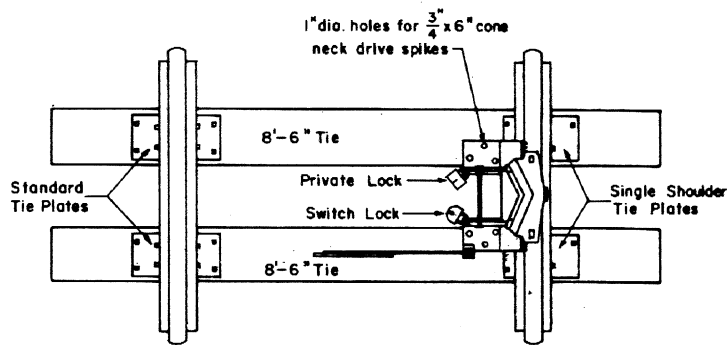
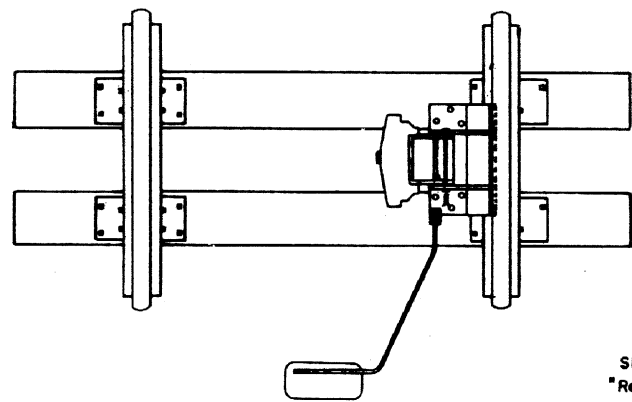


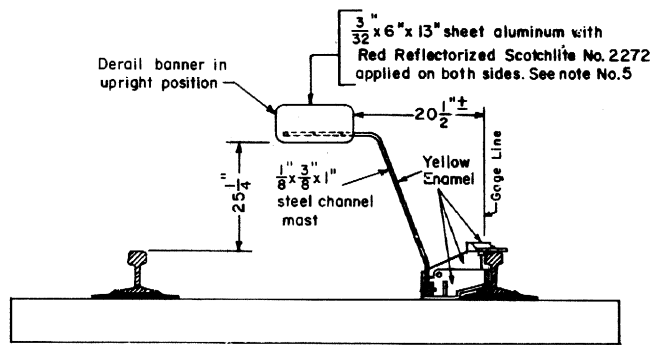
LOCATION OF DERAIL



TOP VIEW

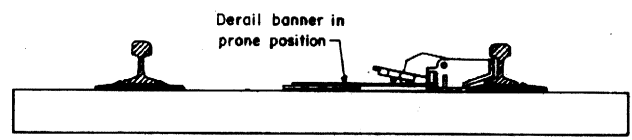


TOP VIEW



SIDE VIEW

DERAIL IN "NORMAL POSITION"



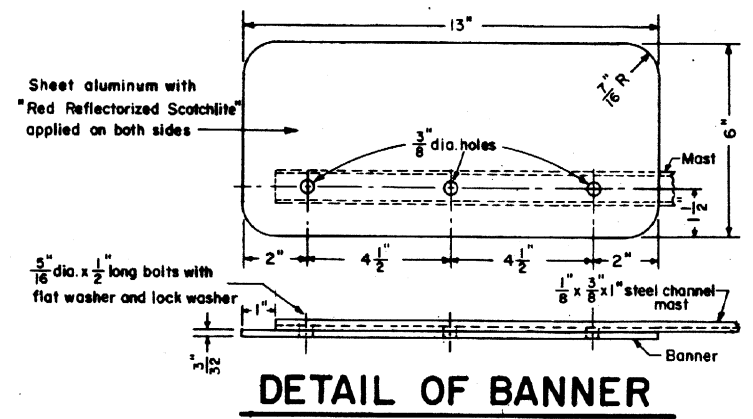
SIDE VIEW

DERAIL IN "REVERSE POSITION"

NOTES

- 1- Two Way Type Derails are to be used on enginehouse ready and storage tracks.
- 2- All derails shall be so located on the outside rail so as to divert cars and locomotives away from main or other track well in advance of the clearance point.
- 3- When ordering derail specify size

SIZE NO.	WEIGHT OF RAIL
5	70 lb. to 100 lb.
6	90 lb. to 110 lb.
7	110 lb. to 140 lb.
8	140 lb. to 155 lb.
- 4- Red ReflectORIZED Scotchlite No. 2272 shall be applied on sheet aluminum (both sides) for derail banner.
- 5- The aluminum surface of the banner shall be thoroughly cleaned with *Smulco No. 1* before the application of scotchlite by the use of heat (to activate the adhesive) and vacuum pressure (to mold the material to the aluminum surfaces).
- 6- When fastening banner to the mast, care should be exercised to reduce the possibility of damaging the scotchlite material.
- 7- Derail is to be painted yellow enamel over primer.
- 8- All derails to accommodate padlocks on both ends, one a switch lock and the other a private lock.



DETAIL OF BANNER

CONRAIL **73921-A**

STANDARD
**METHOD FOR INSTALLING
 HAND THROWN HAYES TWO WAY DERAIL
 MODEL-EBXF**

NOVEMBER 1976

RHS
Chief Engineer - Maintenance of Way
W. J. ...
Chief Engineering Officer