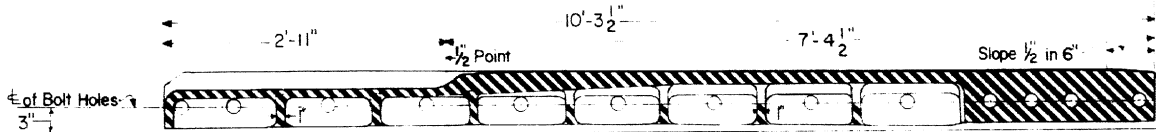


FROG TIE PLATES REQUIRED

- 4 — FT20
- 6 — FT23
- 10 — FT27
- 2 — FT27 Modified
- 2 — FT29
- 2 — FT29 Modified
- 2 — FTR29
- 2 — FTR31 Modified
- 2 — FTR33 Modified

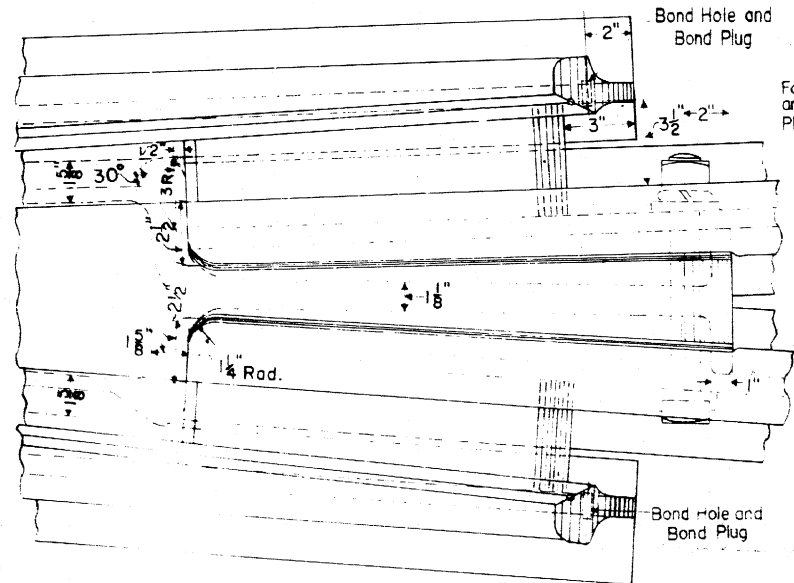
C.R. Plan 72105-()

All bolts except joint and Foot Guard Bolts shall be 1 3/8\"/>



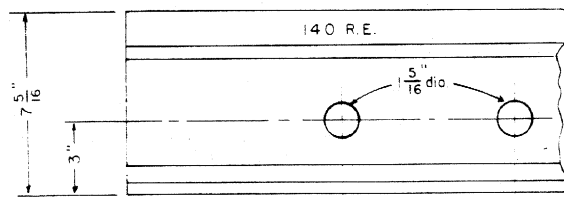
Cored Bolt Holes in Body Casting shall be oval; the vertical diameter may be 5/16\"/>

SECTION THROUGH MANGANESE BODY ON CENTER LINE



DETAIL AT HEEL END OF CASTING

For details of bond holes and bond plugs, see Plan 74149-()



RAIL END DRILLING

FOR FIELD WELDS

NOTES

- 1 — This plan is for use with A.R.E.A. recommended standards for 140 RE Rail.
- 2 — Workmanship and materials, including beveling and harding rail ends, shall be per current "A.R.E.A. Specifications"
- 3 — Groove for bond wires shall extend from end of filler block at least to center line of second bolt hole.
- 4 — All bolts used in construction of frog and switch material shall be dipped immediately before applying (so that all threads are thoroughly coated) in NO-OX-ID "GG" grease, manufactured by Dearborn Chemical Company.
- 5 — When frog is to be used in bolted track, first bolt hole is to be drilled in the field as shown on C.R. Plan 71010.

Sections and other details shall be in accordance with Standard Plan 74149-()

74141-A

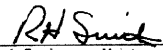
CONRAIL

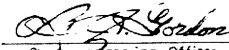
STANDARD

NO.10 RAILBOUND MANGANESE STEEL FROG

FOR 140RE RAIL

DECEMBER 1970


 Chief Engineer - Maintenance of Way


 Chief Engineering Officer