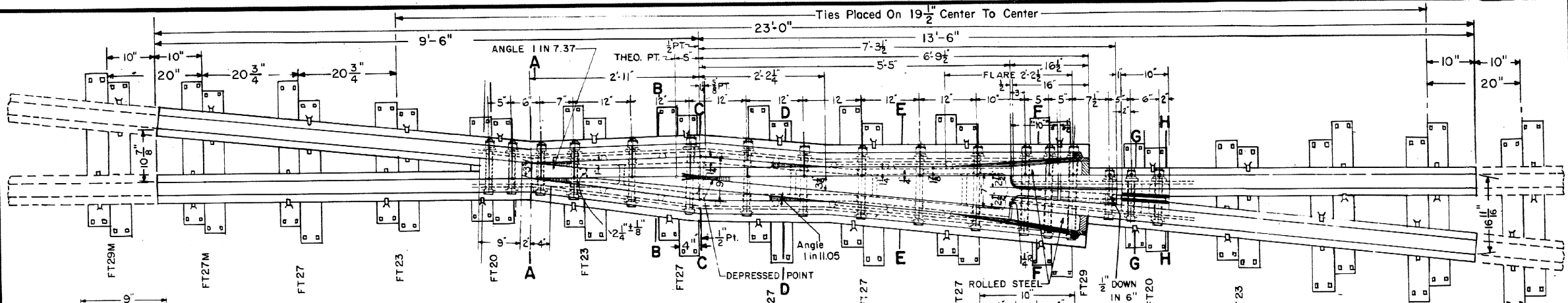


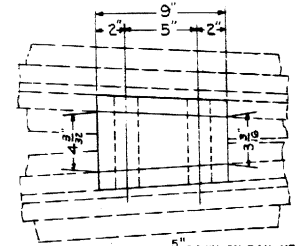
Revisions

- B-June, 1978
- C-Oct., 1980
- D-May, 1986
- E-May, 1987
- F-Aug., 1991

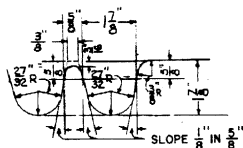


PLAN

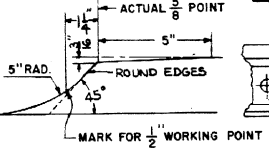
Frog Angle = 5°-43'-29"



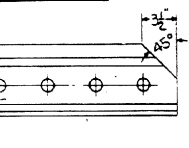
TOE FILLER BLOCK
SPREADS SHOWN ARE 5/8" DOWN ON RAIL HEAD



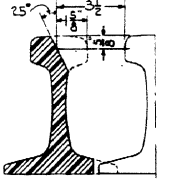
SECTION AT POINT



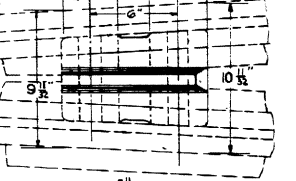
ELEVATION OF POINT



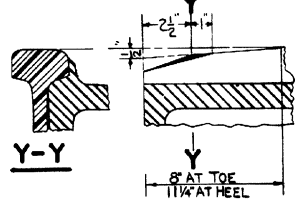
BEVELED END WING RAIL



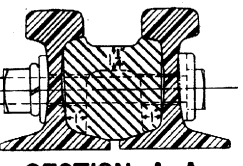
PLANING AT END OF WING RAIL



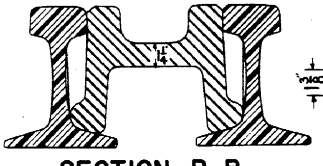
HEEL FILLER BLOCK
SPREADS SHOWN ARE 5/8" DOWN ON RAIL HEAD



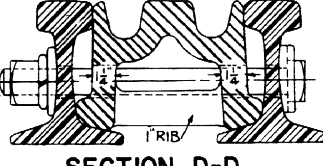
SECTION Y-Y
8" AT TOE
1 1/4" AT HEEL



SECTION A-A



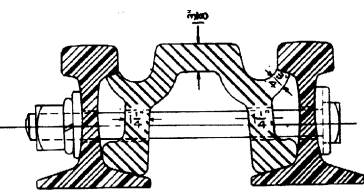
SECTION B-B



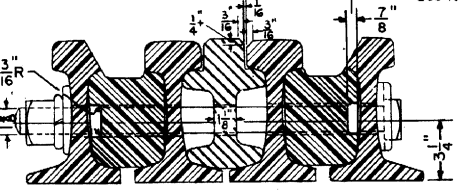
SECTION D-D



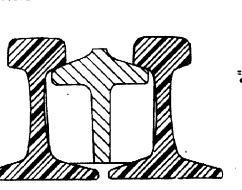
SECTION C-C



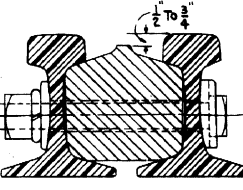
SECTION E-E



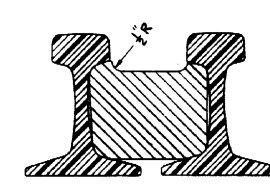
SECTION F-F



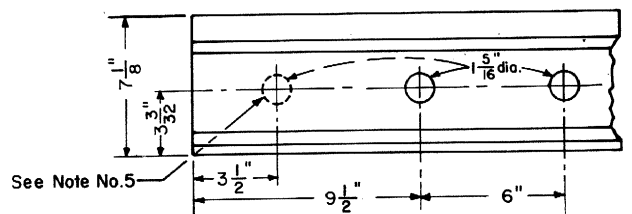
SECTION G-G



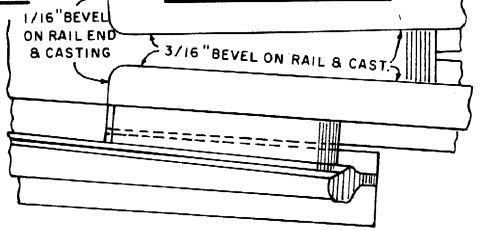
SECTION H-H



SECTION J-J



RAIL END DRILLING
See Note No. 5



BEVEL DETAIL AT HEEL END OF CASTING

SECTION H-H SECTION J-J
FROG TIE PLATES REQUIRED

- 4 - FT 20
- 6 - FT 23
- 10 - FT 27
- 2 - FT 27 Modified
- 2 - FT 29
- 2 - FT 29 Modified
- 2 - FTR 29
- 2 - FTR 31 Modified
- 2 - FTR 33 Modified

C.R. Plan 72105-(1)

NOTES

- 1 - This plan is for use with A.R.E.A. recommended standards for 132 R.E. Rail.
- 2 - Workmanship and materials including beveling and hardening of rail ends shall be per current A.R.E.A. "Specifications".
- 3 - Groove for bond wires shall extend from end of filler block at least to the center line of second bolt hole.
- 4 - All bolts used in construction of frog, shall be dipped immediately before applying (so that all threads are thoroughly coated) in NO-OX-ID "GG" grease.
- 5 - When frog is to be used in bolted track, the first bolt hole to be drilled in the field by Conrail as per Plan 71015-(-).
- 6 - Casting to be explosion hardened, with wing and heel rails to be Fully Heat Treated.
- 7 - All bolt holes in rail to be chamfered 1/16"



CONRAIL
STANDARD
No. 10 RAILBOUND MANGANESE
STEEL FROG - 132 R.E. RAIL
DECEMBER, 1977

R.H. Smith
Chief Engineer - Maintenance of Way

A.P. Corbett
Chief Engineering Officer

74161-F