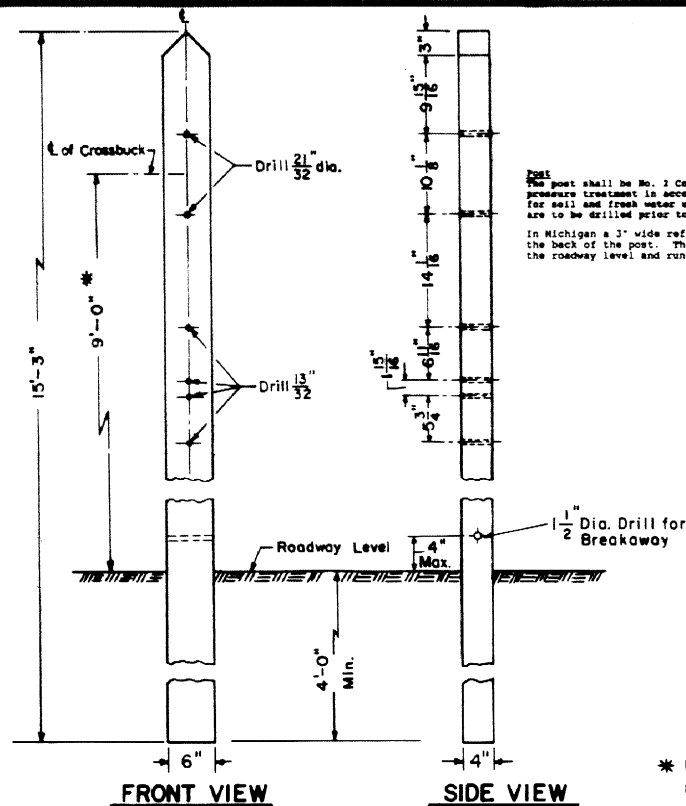


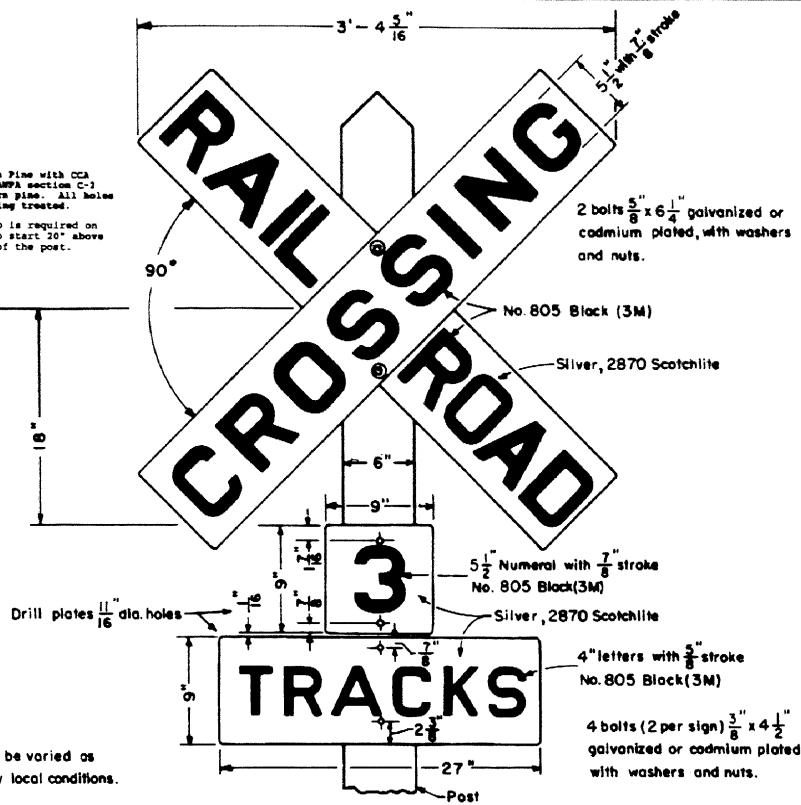
Revisions

- B - July, 1981
- C - Dec., 1992
- D - Sept., 1994

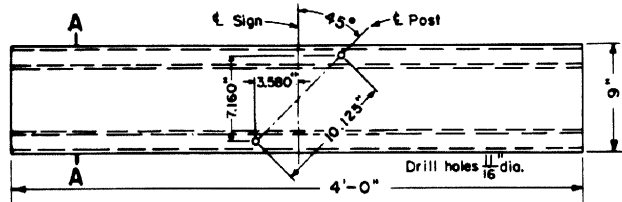
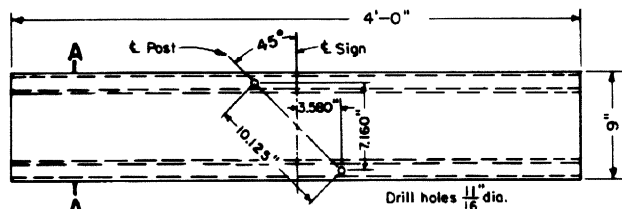


Post
The post shall be No. 1 Common Southern Pine with CCA pressure treatment in accordance with ANPA section C-1 for soil and fresh water use of southern pine. All holes are to be drilled prior to the post being treated.
In Michigan a 3" wide reflective strip is required on the back of the post. The strip is to start 20" above the roadway level and run to the top of the post.

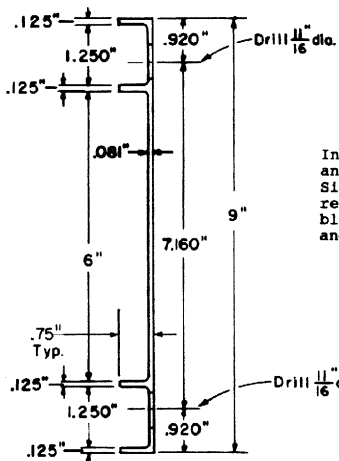
* Height may be varied as required by local conditions.



CROSSING SIGN ASSEMBLY



EXTRUDED ALUMINUM BLADES



In the states of Indiana and Illinois a 2" wide, and in Michigan a 6" wide silver-white (No.2870, Silver, High Intensity Grade, Scotchlite) reflective strip is required on the back of each blade. The reflective strip should be centered and run the length of the blade.


In the state of Ohio, No.3970 Diamond Grade Scotchlite shall be used in place of No.2870 Silver, High Intensity Scotchlite for all passively protected locations only. This includes a 2" wide strip on the back of the blades and on the 4" sides of the post and a 3" wide strip on both 6" sides of the post.
In the state of Ohio, Location of the sign shall be in accordance with current Conrail "Buckeye" Plan 78303.

NOTES

- Highway Crossing Sign** for use where automatic signal protection is not required.
- Location**-The sign shall be erected on the right hand side of the roadway on each approach to the crossing. The center line of the post shall be placed not less than 10'-6" or more than 15'-0" from the center line of the track and 6 feet from the edge of the highway shoulder or 12 feet from the edge of the traveled way in rural areas and 2 feet from the face of the curb in urban areas will usually be attainable. Where unusual conditions demand, variations determined by good judgment should provide the best possible combination of view and safety clearances attainable. The height should be 9'-0" above the roadway level to the center of the crossbar, but may be varied to suit local conditions.
- Crossbar**-The blades shall be 6063-T6 extruded aluminum. The face of the blades shall be covered with No.2870 Silver, High Intensity Grade, Scotchlite sheeting with No.805 Black Ink(3M) letters, or equal.
- Number of Tracks Sign**-The sign to be used where there are two or more tracks. The number displayed on the sign shall be the total number of tracks crossed, including sidings. Normally, where the distance between tracks, measured along the highway, exceeds 100 feet, an additional crossing sign should be erected unless local conditions require otherwise. The sign shall be .081", 6061-T6 aluminum sheet. The face of the signs shall be covered with No.2870 Silver, High Intensity Grade, Scotchlite sheeting with No.805 Black Ink(3M) letters, or equal.
- Specifications**- As per current issue of the Federal Highway Administration, Part VIII Traffic Control Systems for Railroad Grade Crossings. The letters and numerals as per current U.S. DOT Series D and E.

Ordering - Specify sign complete or individual crossbar, track sign or post, in addition the numeral for the track sign must be specified. Any modifications necessary to comply with legal requirements must be specified.

AAR/DOT Inventory Number
AAR/DOT Inventory Number tag should be installed on the back of the post at 6'-0" above ground.



CONRAIL 78302-D

STANDARD

90° HIGHWAY CROSSING SIGN

AUGUST, 1978

R.H. Smith
Chief Engineer - Maintenance of Way

B.R. Gordon
Chief Engineering Officer