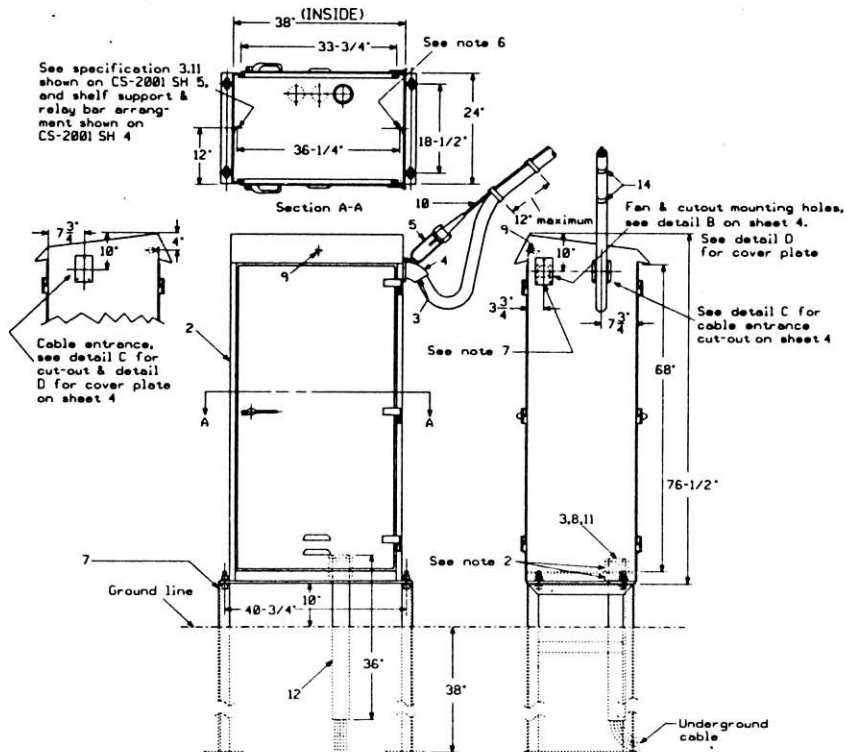


See specification 3.11 shown on CS-2001 SH 5, and shelf support & relay bar arrangement shown on CS-2001 SH 4



ITEM	NAME	REQ	REF	ACCT NO
1	Bracket, shelf		2001-2	02-694832
2	Case, high single	1		02-108666
3	Compound, Sealing			47-167228
4	Coupling, compl. 3-1/8" x 3-1/4"			02-165000
5	Deadend, for 3/8" Magr.	1		02-859005
6	Fan, ventilating			02-762191
7	Pier, instrument case	2	2506-1	02-322004
8	Bushing, 4"	1		49-146119
9	Light with receptacle	1		
10	Messenger 3/8" copperweld			02-850003
11	Nut, lock, 4"	2		49-485301
12	Pipe, 4" Gal. steel, 36"	1		
13	Relay bar assembly		2001-1	02-678611
14	Straps, cabling			02-556189
15	Switch, thermal			02-573127

NOTES:

1. See CS-2001 SH 5 for specifications.
2. One 4" diameter lock nut, item 11, to be mounted above floor and one below floor on pipe, item 12, to secure pipe to the floor of case as shown.
3. All cable openings to be sealed. Item 3
4. Aerial cable entrance will have messenger from source secured to thimbleys with Strandvice or preformed dead-ends.
5. Aerial cable shall be secured to messenger with hook-less straps or spinning wire.
6. See case details drawing CS-2001 SH 4 for details of relay mounting bars, and shelf supports.
7. When fan, item 6 is required, order coupling item 4, and switch item 15. Field forces to provide screen for fan opening.

SHEET 2
CONT ON SH 3

CONRAIL CS-2001

STANDARD
STEEL CASE
HIGH SINGLE

ISSUE DATE: NOV. 6, 1966

REV.

22

REV	DATE	BY