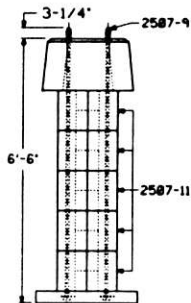
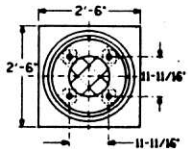
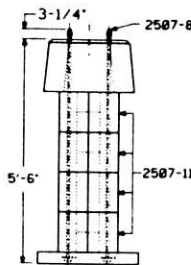
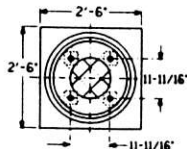


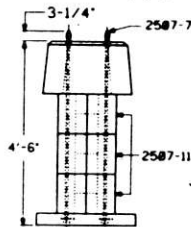
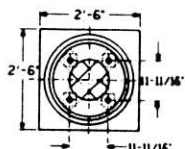
FOUNDATION FOR 12' TO 30'
CANTILEVER SIGNAL ARMS
See sheet 2 for details
2507-6



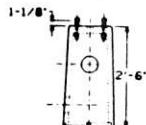
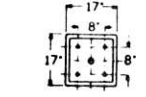
FOUNDATION
FOR 22' HIGH
WAYSIDE SIGNALS
See sheet 3 for details
2507-5



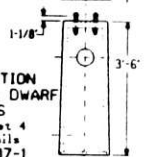
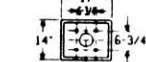
FOUNDATION
FOR 17' HIGH
WAYSIDE SIGNALS
See sheet 3 for details
2507-4



FOUNDATION
FOR FLASHER OR
HIGHWAY CROSSING GATES
See sheet 3 for details
2507-3



FOUNDATION
FOR SA DWARF
SIGNALS
See sheet 4 for details
2507-2



FOUNDATION
FOR FA DWARF
SIGNALS
See sheet 4
for details
2507-1

8'-5"
96/10/4
98

See sheet 3 for notes and sheet 4 for account reference numbers.

REV	DATE	BY

SHEET 1
CONT ON SH 2

CONRAIL CS-2507-A

STANDARD
FOUNDATIONS, PRECAST CONCRETE
FOUNDATIONS, SIGNALS, AND GATES

Approved *[Signature]*
Chief Engineer CBS
Chief Engineering Officer

ISSUE DATE: MAR 8, 1988

REV.	DATE	BY