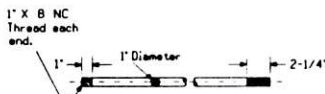
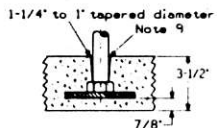
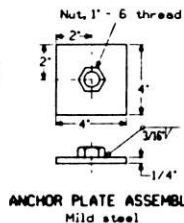
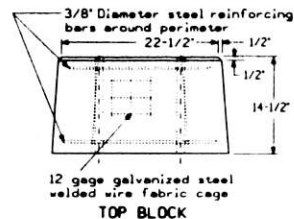
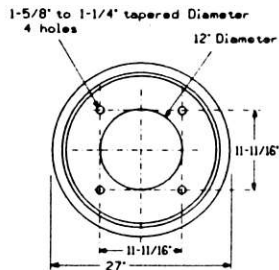


5 Gage (0.207) steel wire stirrups
2507-11 SPIDER



Hot dipped galvanized with 3 nuts and 3 washers

- 2507-7 4'-9-1/4" long for 4'-6" Foundation
- 2507-8 5'-9-1/4" long for 5'-6" foundation
- 2507-9 6'-9-1/4" long for 6'-6" foundation



NOTES:

1. Reinforcement shall be placed not less than one inch from outside surfaces.
2. Bolts, nuts, and washers shall be galvanized.
3. Concrete shall be in accordance with American Railway engineering Association Specifications for concrete structures and foundations chapter 8. Coarse aggregate shall consist of 3/4" maximum size stone or gravel. Not less than 7.18 bags (94 lbs/bag) of cement shall be used per cubic yard of concrete. Water cement ratio with 5% or - 1% air entrainment to produce a compressive strength of not less than 5000 pounds per square inch after 28 days shall be used.
4. Top and bottom surfaces of all parts shall be flat and parallel.
5. Reinforcing steel bars shall be per ASTM A615.
6. When assembling foundations, bolt threads shall be coated with NO-OXIDE item 14.
7. Bolts, nuts, and washers to have 68,000 pounds per square inch tensile strength and 36,000 pounds per square inch yield strength.
8. Foundations for cantilevers in excess of 30' shall be ordered 02-special.
9. Base block bolt holes shall be plugged for shipment.
10. All foundations will be installed level with top of rail or as the STATE prescribed height from the crown of the highway.
11. Corrugated steel ring, item 15, must be installed when level of fill cannot be maintained at 6' from the bottom of foundation top block.
12. Bracket mast signal with 28' bolt spacing in base, order special.

See sheet 4 for account reference numbers.

46

REV.	DATE	APP.

CS-2507-A

STANDARD
FOUNDATIONS, PRECAST CONCRETE
DETAILS FOR 2507-3, 2507-4, AND 2507-5

ISSUE DATE: MAR 81/88	
REV.	