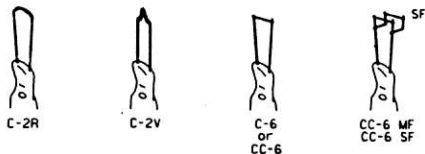
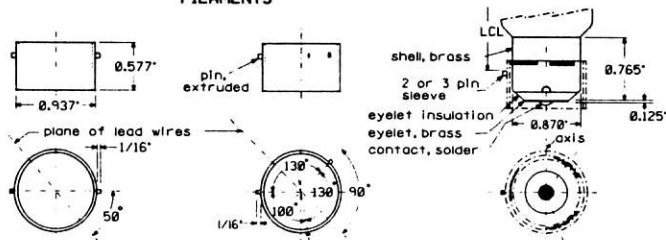


**BULB TYPICALS**



**FILAMENTS**



2 pin sleeve-bronze  
2 PS

3 pin sleeve-bronze  
3 PS

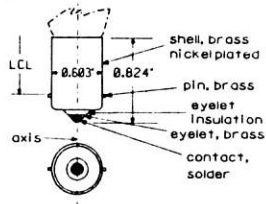
Sleeve securely soldered to base at top 3 points (20°).

After assembly to lamp check with ring gauges for 0.938" "G0" and 0.934" "N-G0".

rebased 1B25 type with 2 or 3 pin sleeve

**BASES**

base pins at 90° to plane of lead wires



single contact bayonet type  
SC

**NOTES:**

**BULB SHAPES:**

The shapes of lamp bulbs are designated by letters as shown. The sizes of lamp bulbs are designated by numbers following the letter as (A-15, S-11, etc.). The number represents the maximum bulb diameter in eighths of an inch. Example: S-11 = 11/8" = 1-3/8" diameter. All bulbs are clear lead or lime glass and are type C gas filled.

**FILAMENTS:**

The mounting of tungsten filaments is designated by an identification prefix letter, a number and sometimes a suffix letter. The prefix letter indicates whether the filament is straight wires, coiled (cl), or coiled coil (cc). The number indicates the form or arrangement of the filament on the supports. C-2 suffix 'R' indicates rounded form and 'V' indicates 'V' shape. Two identical filaments in multiple have a prefix '2', thus 2 C-2V. The letters 'MF' indicate major filament, and 'SF' secondary filament.

**BASES:**

Bayonet base light center length (LCL) is the distance from the top of the base pin to the light center of the filament.

55

REV	DATE	CD	BY

SHEET 2  
CONTRAIL CS-4000-A

STANDARD  
ELECTRIC LAMPS

ISSUE DATE: JAN. 26, 1987

Rev. FEB. 24, 1988

SHEET