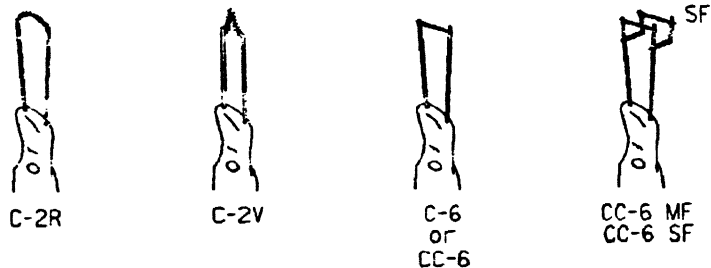
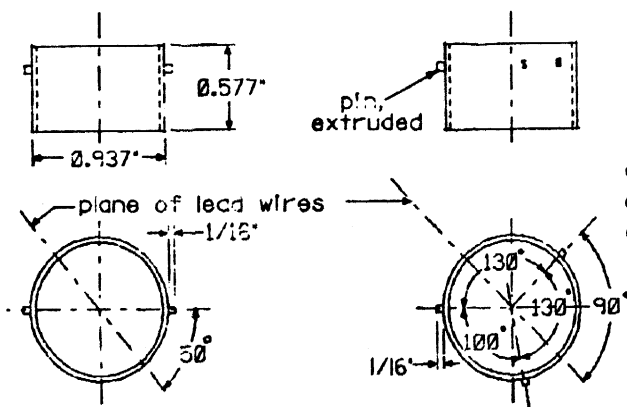


BULB TYPICALS

**PRELIMINARY**



FILAMENTS



2 pin sleeve-bronze  
2 PS

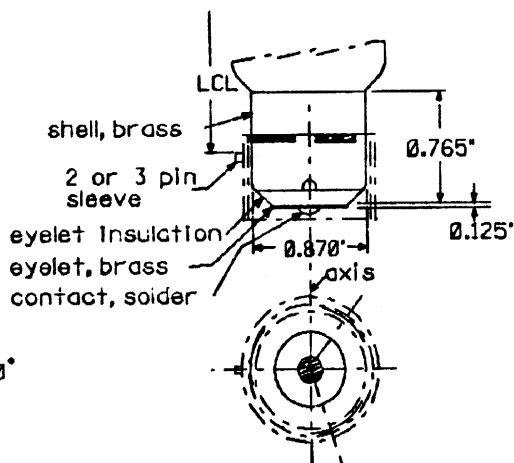
3 pin sleeve-bronze  
3 PS

Sleeve securely soldered to base at top 3 points 120°.

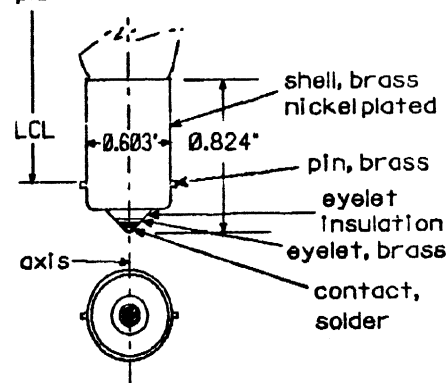
After assembly to lamp check with ring gauges for 0.938"  $\pm$  0.001 and 0.934"  $\pm$  0.001.

rebased 1825 type with 2 or 3 pin sleeve

BASES



base pins at 90° to plane of lead wires



single contact bayonet type  
SC

**NOTES:**

**BULB SHAPES:**

The shapes of lamp bulbs are designated by letters as shown. The sizes of lamp bulbs are designated by numbers following the letter as (A-15, S-11, etc.). The number represents the maximum bulb diameter in eighths of an inch. Example: S-11 = 11/8" = 1-3/8" diameter. All bulbs are clear lead or lime glass and are type C gas filled.

**FILAMENTS:**

The mounting of tungsten filaments is designated by an identification prefix letter, a number and sometimes a suffix letter. The prefix letter indicates whether the filament is straight wire(s), coiled (c), or coiled coil (cc). The number indicates the form or arrangement of the filament on the supports. C-2 suffix 'R' indicates rounded form and 'V' indicates 'V' shape. Two identical filaments in multiple have a prefix '2', thus 2 C-2V. The letters 'MF' indicate major filament, and 'SF' secondary filament.

**BASES:**

Bayonet base light center length (LCL) is the distance from the top of the base pin to the light center of the filament.

SHEET 2  
CONT'D ON SH 3 **CONRAIL** CS-4000-B  
STANDARD  
ELECTRIC LAMPS

ISSUE DATE: JAN. 26, 1987	
REV.	SHEET