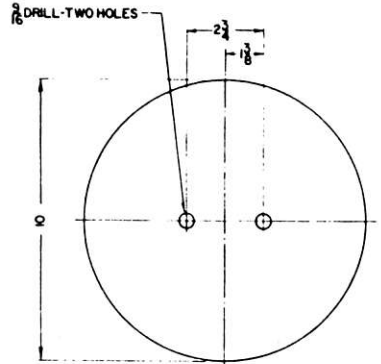
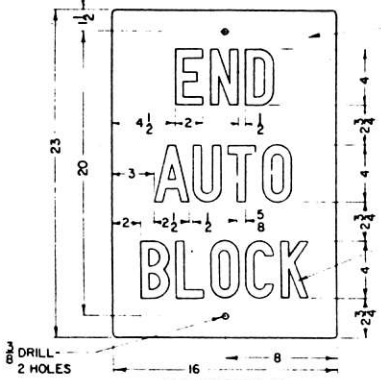


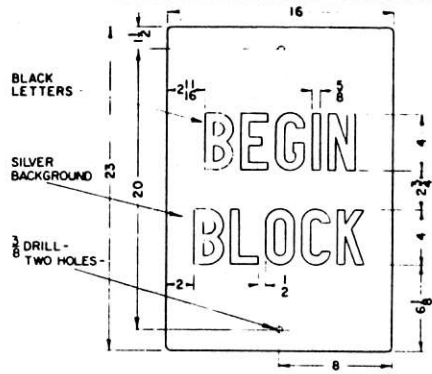
Rev. A 12-3-60 stop sign
7000-16 illustrated from
this sheet only
Rev. B 6-9-63 added def
7000-34 bracket



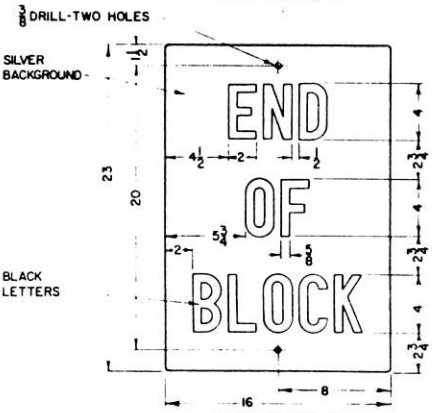
MARKER 7000-B - RED BACKGROUND
MARKER 7000-9 - YELLOW BACKGROUND
MARKER 7000-10 - BLUE BACKGROUND



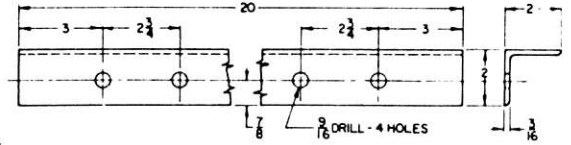
SIGN 7000-17



SIGN 7000-11

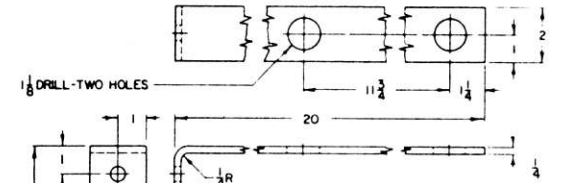


SIGN 7000-19



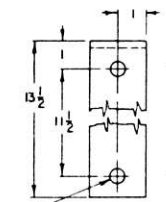
BRACKET 7000-36

Material - aluminum alloy angle 6061 T6, for use
with bracket 7000-25 to support markers 7000-8
7000-9



BRACKET 7000-39

To be furnished complete with fasteners
specified
Material 1018 steel
Use with 7000-7 grade marker



SEE NOTES ON SHEET 1

SHEET 2
CONT'D ON SH 3 **CONRIL** CS-7000-B

STANDARD
SIGNS AND MARKERS
DUMMY MAST MARKER, BEGIN BLOCK, END
OF BLOCK, END OF AUTO BLOCK,
AND STOP SIGNS
OCT 28, 1976

64