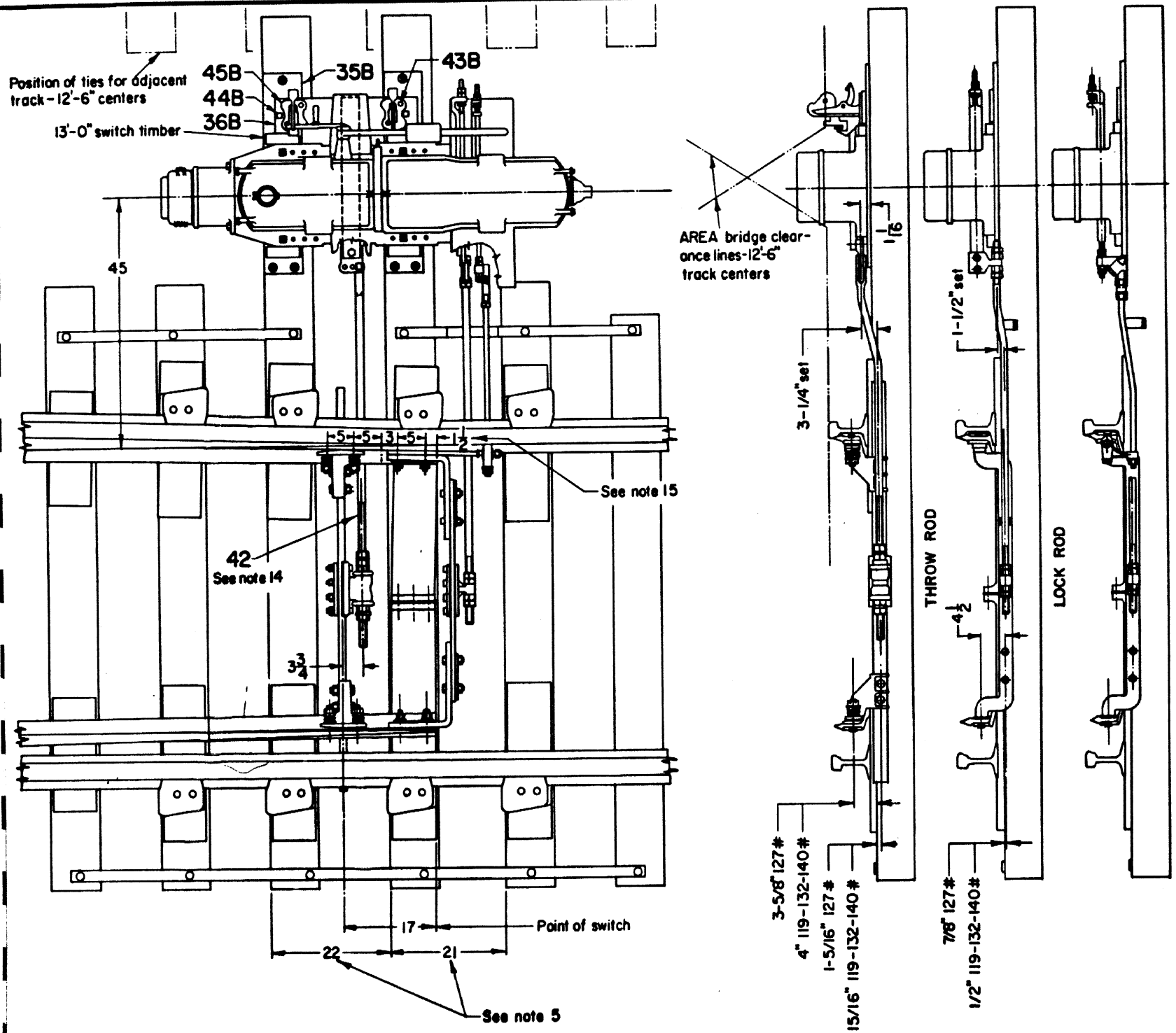


add  
4B  
or  
17840




USE NO.	OMIT NO.	ITEM	REQ.	REF.	ACCOUNT REFERENCE NO.
35B	35	Plate, saddle	2	8004-17	02-338729
36B	-	Plate, lock stand P85-719	1	8004-22	02-343307
42	-	Rod, throw	1	8002-10	02-439634
43B	-	Bolt 1/2-13NC XI-1/4 Hex Hd	4		19-178415
44B	-	Screw, lag 3/4 Dia x 6Lg	2		19-656410
45B	-	Stand, lock GRS P85-794	2		

POINT DETECTOR ROD

- NOTES:** (See sheets 1 and 3 also)
- This plan shows those items required in addition to or in place of items shown on sheet 1, and listed on sheet 2 for switches powered by GRS model 5F and 5H dual control machines. All requirements of sheets 1 and 2 must be met except as modified by the information on this plan.
  - Layout shows the short type switch adjusting bracket as furnished by the M.O.W. Dept. bolted to the No. 1 rod. Item 17, shown on sheet 1 is GRS A91-143 bracket. With switch machine positioned as shown, in reference to point of switch, the GRS A91-143 bracket may be used by moving machine end of throw rod to center hole of throw bar coupling.
  - New switches are furnished with rocker clip on the MOW No. 1 rod. Use of these clips permits throw rod 8002-10 to be used for 119, 127, 132, and 140 Lb. rail with any GRS model switch machine used with this layout.
  - This plan is for use with switch points drilled in accordance with A.R.E. A standards.

SHEET 4

**CONRAIL**  **CS-8000-A**

STANDARD SWITCH LAYOUT

GRS MODEL 5 SWITCH MACHINES

119, 127, 132, & 140 LB. RAIL

APR. 2, 1980