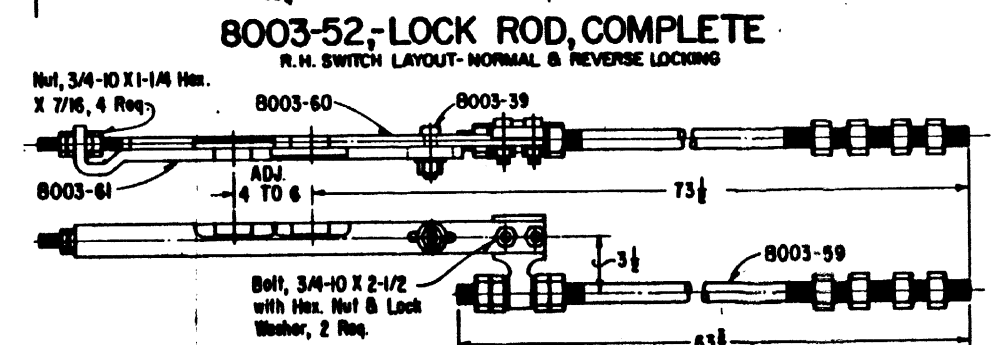
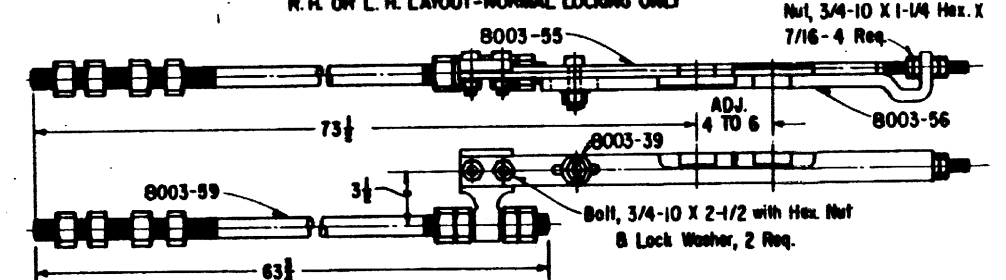
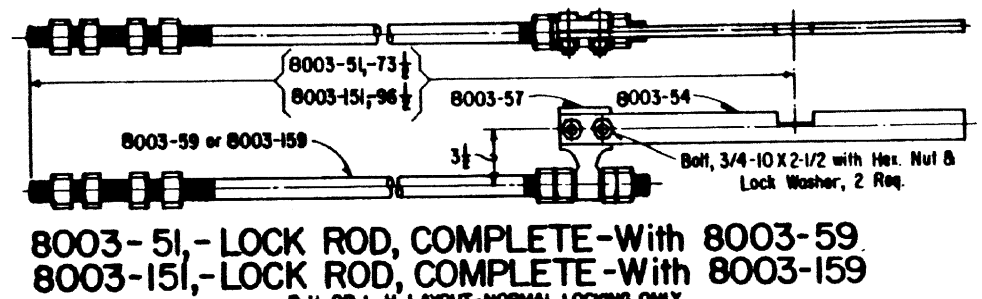
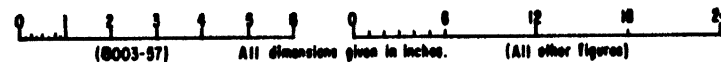


NOTES:

1. - Material - C. D. Steel AISI-1335 unless otherwise noted.
2. - Rods must not be welded or reformed after manufacture.
3. - Protective treatment, CE234, Sec. 28.
4. - Account reference numbers are listed on sheet 6.



SHEET 4
CONT'D. ON SH 5

CONRAIL

CS-8003

STANDARD
SWITCH RODS
LOCK ROD ASSEMBLIES FOR SWITCHES
OPERATED BY GRS SWITCH MACHINES
AUG. 6, 1976