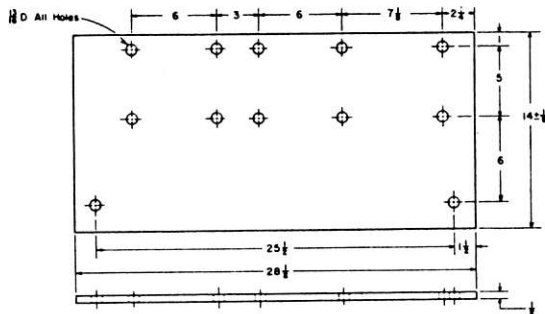


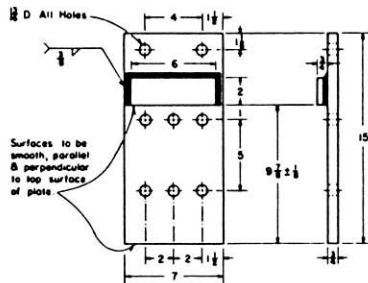
Rev A 5-3-79 added detail
 -17
 Rev B 6-4-79 Detail -17, 1 X
 2-3/4 slot over 13/16 hole.
 Rev C 4-2-80 added detail
 -22 to account reference
 number list. Added con'd on
 sheet 4 to title block
 Rev D 2-24-83 Anchor reference
 account nos for -24 & -25

ACCOUNT REFERENCE NUMBERS

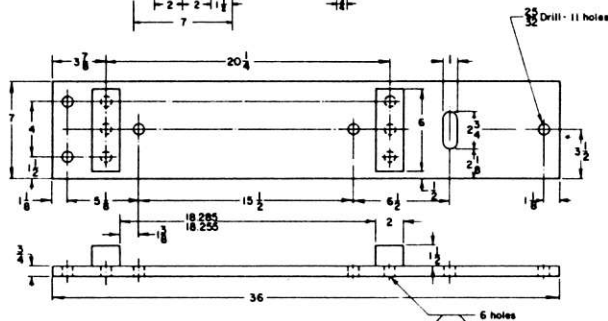
8004-1	02-338612	8004-24	02-339081
- 2	02-338620	- 25	02-339107
- 3	02-354114		
- 4	02-338638		
- 5	02-338646		
8004-7	02-338679		
- 8	02-563503		
8004-11	02-338661		
8004-13	02-338687		
- 14	02-338695		
8004-17	02-338729		
8004-20	02-338703		
- 21	02-338950		
- 22	02-343307		



8004-21, BASE PLATE, Crank Stand.



8004-20, ANCHOR PLATE



8004-17, SADDLE PLATE,
 G.R.S. 5F & 5H Machines

SEE NOTES ON SHEET 1

SHEET 3
 CONT'D ON SH 4

CONRAIL
 STANDARD
BASE PLATES

CS-8004-D

BASE PLATES FOR SWITCH LAYOUTS USING GRS
 MODEL 5 & 9 SWITCH MACHINES

FEB 27, 1978