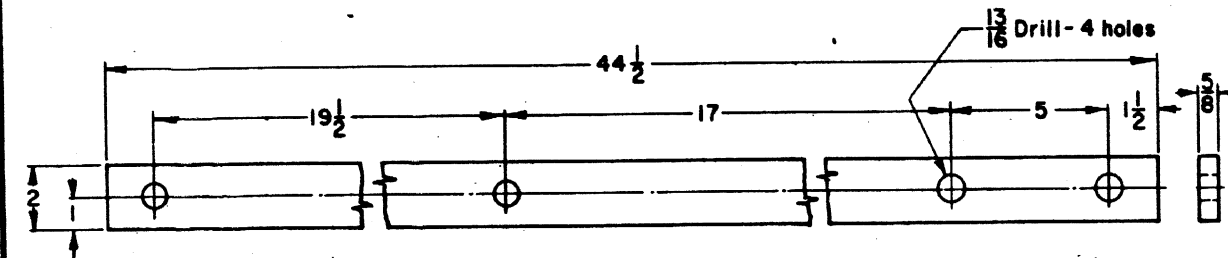


8014-5 TIE STRAP-DROP



8014-3 TIE STRAP


8014-1 TIE STRAP

ACCOUNT REFERENCE NUMBERS	
8014-1	02-556015
8014-3	02-556023
8014-5	02-556049

NOTES:

1. Material to be 1018 hot rolled steel
2. Finish with primer, and flat black paint.

SHEET 1

CONRAIL  **CS-8014**

STANDARD
TIE STRAPS
FOR SWITCH LAYOUTS

APR. 10, 1980

Approved *H. Alexander*
Chief Engineer CBS