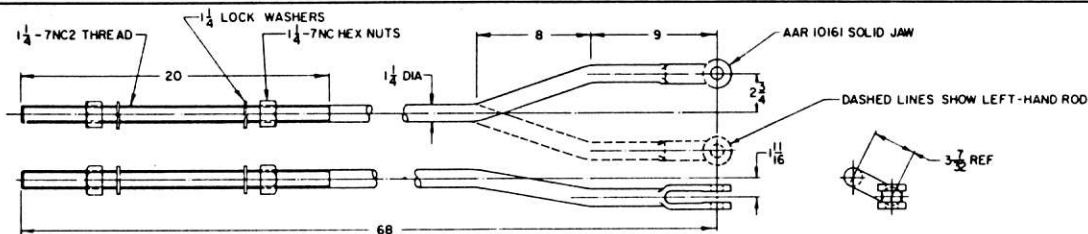
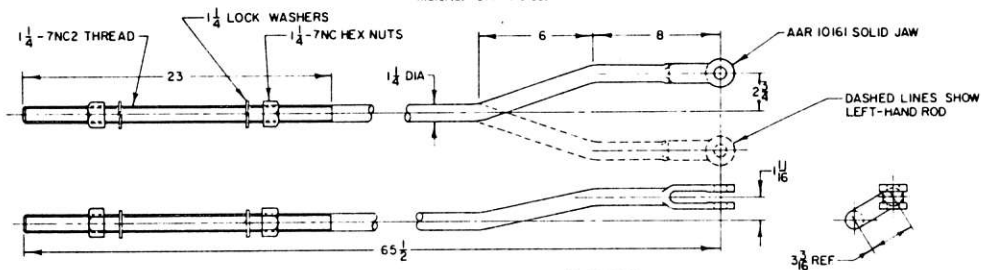


Rev. A-5-20-82 added  
operating temp 833127,  
B 833128  
Rev. B-12-14-82 added  
operating rods 833129  
B 833130



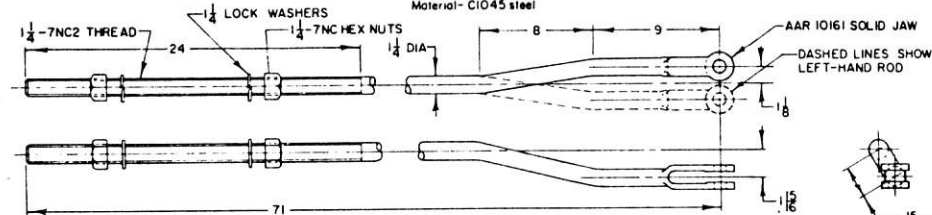
**OPERATING ROD, R.H. 833132 (SHOWN)**  
**OPERATING ROD, L.H. 833133**

Material - C1045 steel



**OPERATING ROD, R.H. 833127 (SHOWN)**  
**OPERATING ROD, L.H. 833128**

Material - C1045 steel



**OPERATING ROD, R.H. 833129 (SHOWN)**  
**OPERATING ROD, L.H. 833130**

Material - C1045 steel

**NOTES:**

- Upon completion of forming, forging, or welding, and before machining, steel parts must be normalized

ACCOUNT REFERENCE NUMBERS

833132	02-448304	833128	02-453007
833133	02-448353	833129	02-453205
833127	02-452751	833130	02-453304

SHEET 1

**CONRAIL**

**CS-8331-B**

STANDARD

**OPERATING RODS**

FOR USE WITH US&S SWITCH MACHINES  
119,132, & 140 LB. RAIL

APR 10, 1980

Approved: *E. Alexander*  
Chief Engineer, CBS